

United Way of Metropolitan Dallas

*serving Dallas, Collin, Rockwall Counties
and Greater Lewisville*



what matters.™

2006 Community Needs Assessment Increasing Self-Sufficiency

Adult and Family Literacy

Adult and Family Literacy – North Texas Overview

Literacy encompasses a basic set of skills required to function in society. Literacy skills provide a foundation for obtaining and keeping a job, supporting the education of one's children, and participating fully in civic life. On the whole, it is a major factor in determining a person's quality of life.

Although recent data on North Texas literacy is not available, national data compiled by the 2003 National Assessment of Adult Literacy suggests that literacy² has increased for White, Asian and Black Adults³, and literacy for Hispanics as a group has decreased since 1992.

With the rich diversity of the United Way of Metropolitan Dallas' four county service region (Dallas, Collin, Denton and Rockwall), the needs of our community will continue to be affected by changing demographics such as race, place of birth (native or foreign born), and educational attainment. These changes in the population will be helpful in gauging the literacy rate and need for literacy skills.

Region

- 14% of Texas residents report that they speak English less than very well.
- Educational attainment for those over the age of 25 varies greatly throughout the region.

² 2003 National Assessment of Adult Literacy, NAAL defines literacy as "using printed and written information to function in society, to achieve one's goals, and to develop one's knowledge and potential.

³ 1992 National Adult Literacy Survey and 2003 National Assessment of Adult Literacy.

Results are reported on three literacy scales:

Prose literacy

The knowledge and skills needed to perform prose tasks, (i.e., to search, comprehend, and use continuous texts). Examples include editorials, news stories, brochures, and instructional materials.

Document literacy

The knowledge and skills needed to perform document tasks, (i.e., to search, comprehend, and use non-continuous texts in various formats). Examples include job applications, payroll forms, transportation schedules, maps, tables, and drug or food labels.

Quantitative literacy

The knowledge and skills required to perform quantitative tasks, (i.e., to identify and perform computations, either alone or sequentially, using numbers embedded in printed materials). Examples include balancing a checkbook, figuring out a tip, completing an order form or determining the amount of interest on a loan from an advertisement.

These are the changes in score between 1992 and 2003 for each group:

White Adults

Up 9 points in quantitative

Asian/Pacific Islander Adults

Up 16 points in prose


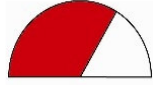


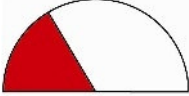
Black Adults

Up 6 points in prose, 8 points in document, and 16 points in quantitative

Hispanic Adults

Down 18 points in prose and 14 points in document

Adult and Family Literacy: Indicators and Trends

| INDICATOR | SUMMARY | TREND | CONDITION |
|------------------------|---|--|---|
| Educational Attainment | Although disparities exist between counties, educational attainment levels have increased throughout the region since 1990 |  Improving |  Concerned |
| Adult Literacy | While literacy levels have improved for Anglo, Asian and African-American adults, Latino adults have experienced declines in literacy levels since 1992 ¹ |  Same or Mixed |  Manageable |
| English Proficiency | Fourteen percent of Texas residents report speaking English “less than very well.” Locally, 19% of Dallas County residents, 9% of Collin County residents and 6% of Denton County Residents have limited English proficiency. | N/A |  Manageable |

¹ Due to a lack of local level information national data is cited here as relevant

Adult and Family Literacy: By County

Dallas County

- Dallas is the most racially/ethnically diverse of the counties in the UWMD service region with a population that is 38% White, 36% Hispanic, 20% African-American, and 4% Asian/Pacific Islander.
- Since 2000, there has been little change in the African American and Asian/Pacific Islander as a percentage of the total population however there has been a 14% decrease in Whites as a percentage of the population and a 20% increase in Hispanics as a percentage of the population.
- From 2003-2004 Dallas County's foreign born population as a percentage of the total population has increased slightly. In 2004, 22.4% of the population of Dallas County was foreign-born, whereas in 2003, 22% of the population was foreign-born.
- Nineteen percent of Dallas county residents do not speak English "very well", the largest percentage in the UWMD service region.
- Dallas County has the region's highest percentage of residents without a High School diploma with 11% completing less than 9th grade and 12% completing less than 12th grade.
- The percentage of residents with Some College (19%) and Associate degrees (5%) is comparable to Denton and Collin counties. The largest disparity is in the percentage of residents with Bachelor's degrees; 19% of Dallas county residents have completed a Bachelor's degree while 30% of Denton County and 32% of Collin County residents have done so.

Collin County

- The racial/ethnic makeup of Collin County is 70% White, 12% Hispanic, 7% African-American and 9% Asian/Pacific Islander.
- Since 2000 the White population as a percentage of the total population has decreased from 76% to 70% between 2000 and 2004 while African-Americans (40%), Asian/Pacific Islanders (29%) and Hispanics (20%) as percentages of the population have continued to grow.
- In 2004, nearly 16% of the population of Collin County was foreign born. While the percentage of foreign born residents has decreased since 2003, the actual number of foreign born has increased 155%.
- Nine percent of Collin County residents speak English less than well, half the percentage as in Dallas County.
- Collin County has the region's largest percentages of residents with Bachelor's and Graduate/Professional degrees, 32% and 16%, respectively- more than half of Collin County residents over the age of 25 have completed some type of post-secondary education (55%).

Denton County

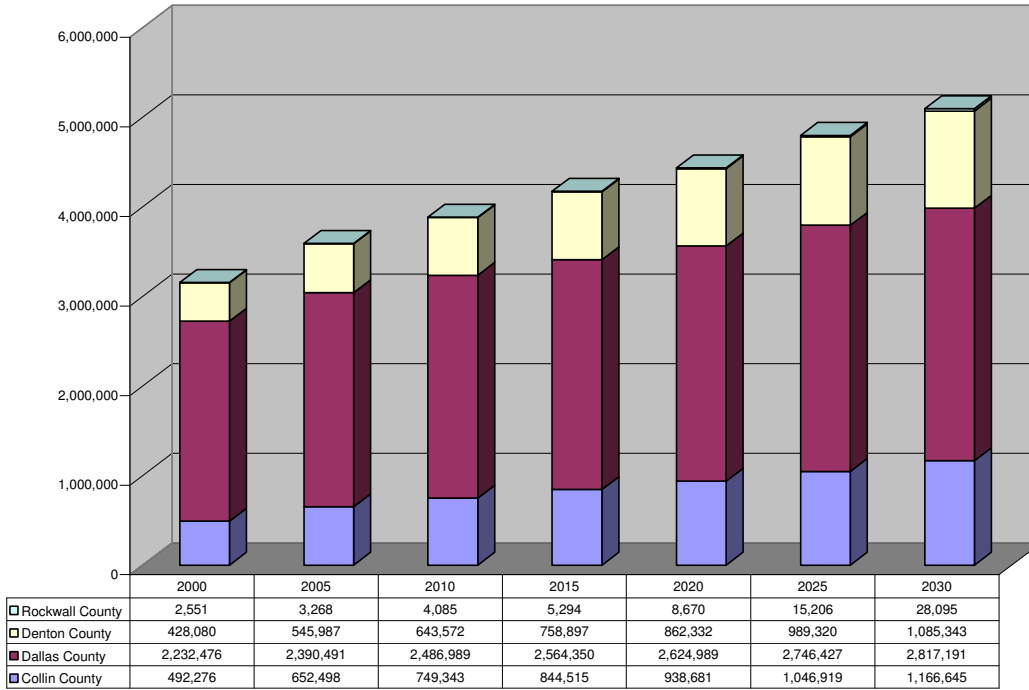
- The racial/ethnic composition of Denton County is 71% White, 7% African-American, 5% Asian/Pacific Islander and 15% Hispanic.
- Since 2000, Whites as a percentage of the total population have decreased by 6%, the Hispanic population as a percentage of the total population has increased by 23% and the African-American and Asian/Pacific Islander populations as a percentage of the population have increased by 20% and 29% respectively.
- In 2004, 10% of the Denton County population was foreign-born, while 14% of the population was foreign born in 2003. Denton County is the only county in the four county region that had a decrease in the percentage of the population that was foreign born.
- Denton County has the lowest percentages of residents who speak a language other than English (17%) and who speak English less than very well (6%). Twenty-four percent of Denton County residents have Some College.
- Denton County nearly mirrors Collin County in educational attainment levels and has the lowest percentage of residents with less than 9th grade education (2%).

Rockwall County

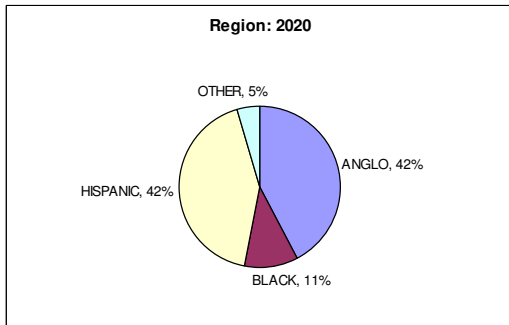
- Updated Census information is not available for Rockwall County

Adult and Family Literacy: Supporting Data

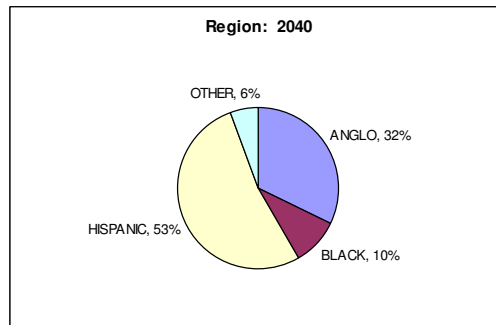
North Texas Population Projection 2000-2030



Source: US Census American Factfinder Survey

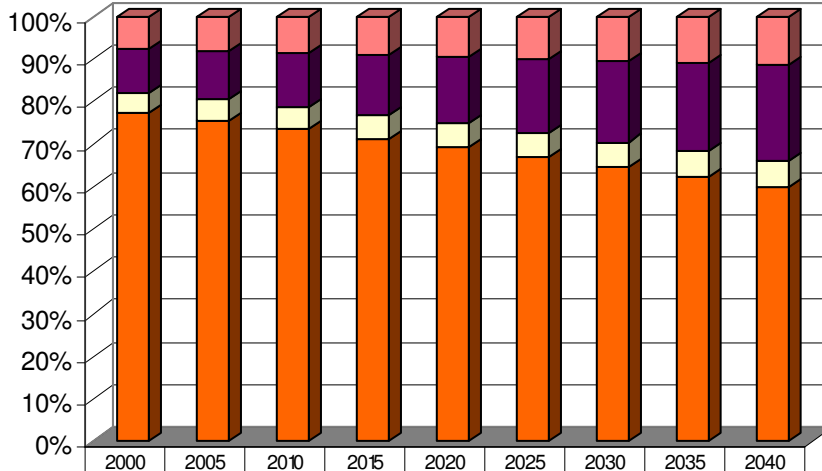


Source: US Census American Factfinder Survey



Source: US Census American Factfinder Survey

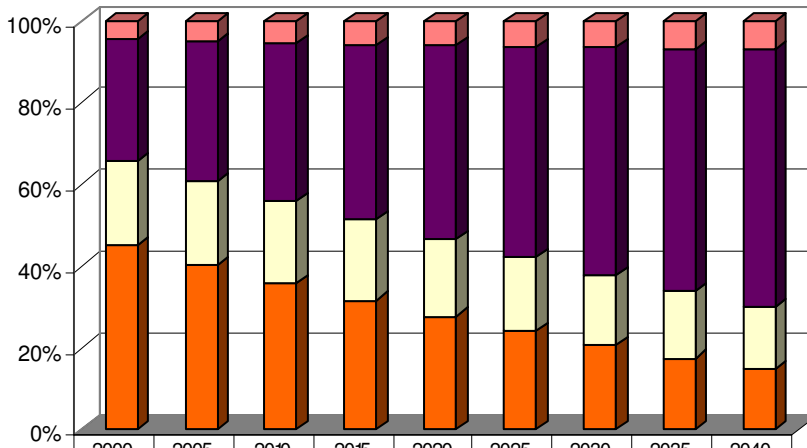
Collin County Changing Demographics



| | 2000 | 2005 | 2010 | 2015 | 2020 | 2025 | 2030 | 2035 | 2040 |
|---------------|---------|---------|---------|---------|---------|---------|---------|---------|---------|
| ASIAN / OTHER | 37,568 | 47,073 | 57,272 | 68,547 | 81,765 | 97,701 | 116,065 | 135,841 | 156,011 |
| HISPANIC | 50,510 | 66,164 | 85,037 | 107,931 | 135,735 | 169,084 | 208,339 | 253,752 | 305,711 |
| BLACK | 24,509 | 29,804 | 35,850 | 42,464 | 49,604 | 57,226 | 65,226 | 73,441 | 81,743 |
| ANGLO | 379,088 | 436,609 | 491,374 | 543,483 | 597,001 | 653,075 | 708,760 | 760,806 | 807,410 |

Source: US Census American Factfinder Survey

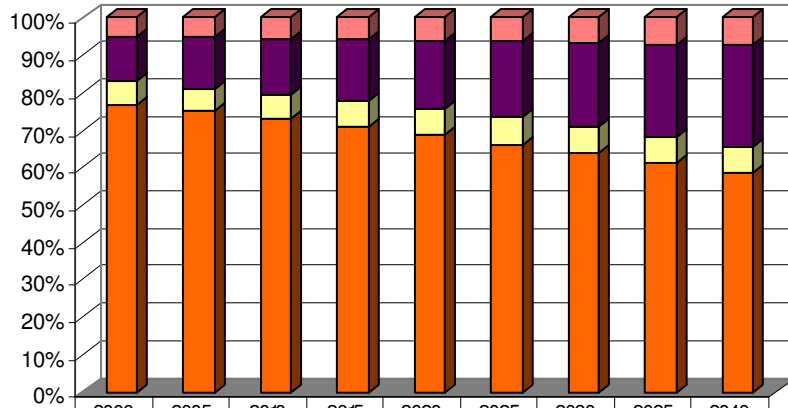
Dallas County Changing Demographics



| | 2000 | 2005 | 2010 | 2015 | 2020 | 2025 | 2030 | 2035 | 2040 |
|---------------|---------|---------|---------|-----------|-----------|-----------|-----------|-----------|-----------|
| ASIAN / OTHER | 103,524 | 123,029 | 143,537 | 163,353 | 183,375 | 204,258 | 226,397 | 249,854 | 273,421 |
| HISPANIC | 662,729 | 818,222 | 988,800 | 1,175,965 | 1,384,808 | 1,622,044 | 1,886,712 | 2,173,289 | 2,478,420 |
| BLACK | 454,103 | 483,449 | 512,466 | 538,512 | 559,753 | 575,531 | 586,620 | 592,877 | 594,277 |
| ANGLO | 998,543 | 963,486 | 920,928 | 871,545 | 817,474 | 760,301 | 700,909 | 640,176 | 579,314 |

Source: US Census American Factfinder Survey

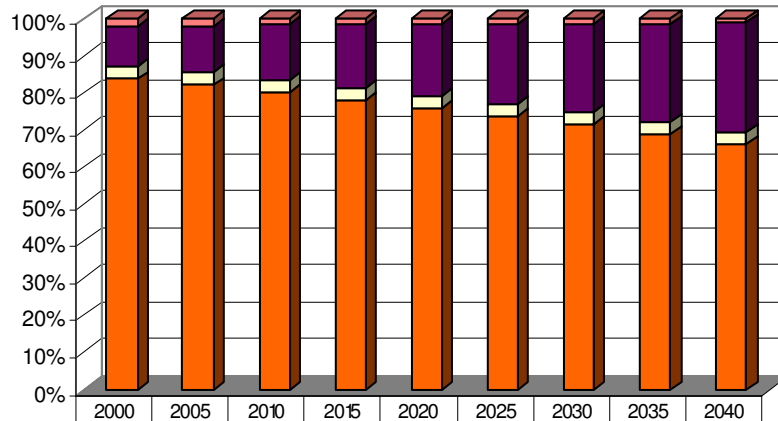
Denton County Changing Demographics



| | 2000 | 2005 | 2010 | 2015 | 2020 | 2025 | 2030 | 2035 | 2040 |
|---------------|---------|---------|---------|---------|---------|---------|---------|---------|---------|
| ASIAN / OTHER | 21,009 | 27,012 | 33,414 | 40,445 | 48,227 | 57,082 | 67,087 | 78,129 | 89,962 |
| HISPANIC | 52,619 | 69,898 | 90,592 | 115,375 | 145,258 | 181,253 | 224,139 | 274,190 | 331,867 |
| BLACK | 26,290 | 32,698 | 39,601 | 47,169 | 55,065 | 63,563 | 72,466 | 81,787 | 91,148 |
| ANGLO | 333,058 | 386,289 | 439,662 | 493,277 | 544,677 | 593,580 | 638,669 | 680,282 | 718,222 |

Source: US Census American Factfinder Survey

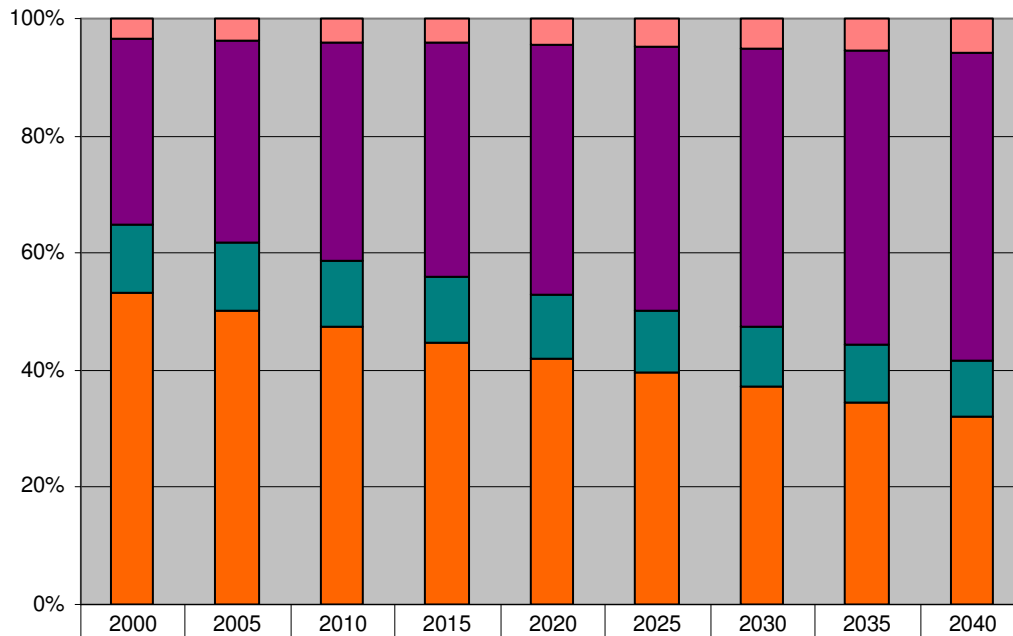
Rockwall County Changing Demographics



| | 2000 | 2005 | 2010 | 2015 | 2020 | 2025 | 2030 | 2035 | 2040 |
|---------------|--------|--------|--------|--------|--------|--------|--------|--------|--------|
| ASIAN / OTHER | 791 | 851 | 911 | 977 | 1,034 | 1,092 | 1,151 | 1,182 | 1,199 |
| HISPANIC | 4,771 | 6,331 | 8,292 | 10,715 | 13,635 | 17,183 | 21,460 | 26,590 | 32,686 |
| BLACK | 1,431 | 1,627 | 1,854 | 2,069 | 2,315 | 2,577 | 2,786 | 2,977 | 3,256 |
| ANGLO | 36,087 | 40,516 | 44,863 | 49,397 | 54,305 | 59,308 | 64,108 | 68,595 | 72,959 |

Source: US Census American Factfinder Survey

Texas Changing Demographics

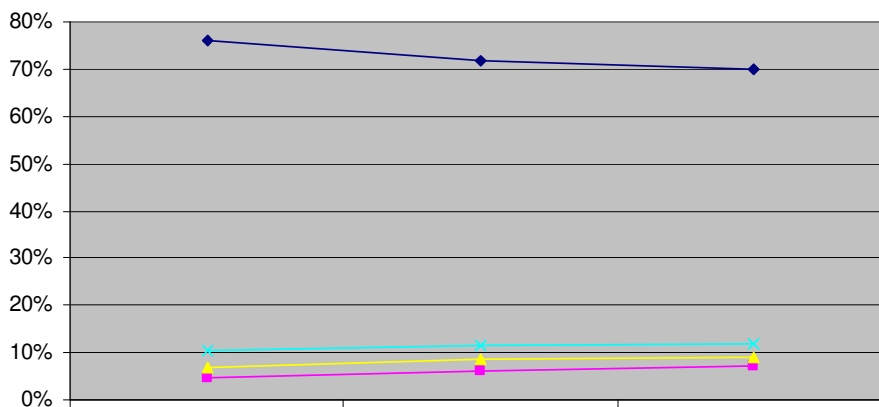


| | | | | | | | | | |
|----------|-----------|-----------|-----------|-----------|-----------|-----------|-----------|-----------|-----------|
| OTHER | 685,785 | 818,706 | 961,460 | 1,112,612 | 1,273,908 | 1,447,400 | 1,632,588 | 1,827,513 | 2,028,603 |
| HISPANIC | 6,669,666 | 7,820,842 | 9,080,466 | 10,436,55 | 11,882,99 | 13,448,47 | 15,140,08 | 16,934,44 | 18,804,29 |
| BLACK | 2,421,653 | 2,588,603 | 2,754,737 | 2,913,059 | 3,052,412 | 3,170,981 | 3,268,611 | 3,345,693 | 3,403,176 |
| ANGLO | 11,074,71 | 11,327,87 | 11,533,98 | 11,694,53 | 11,796,47 | 11,830,58 | 11,789,29 | 11,682,02 | 11,525,08 |

Source: US Census American Factfinder Survey

Race/Ethnicity

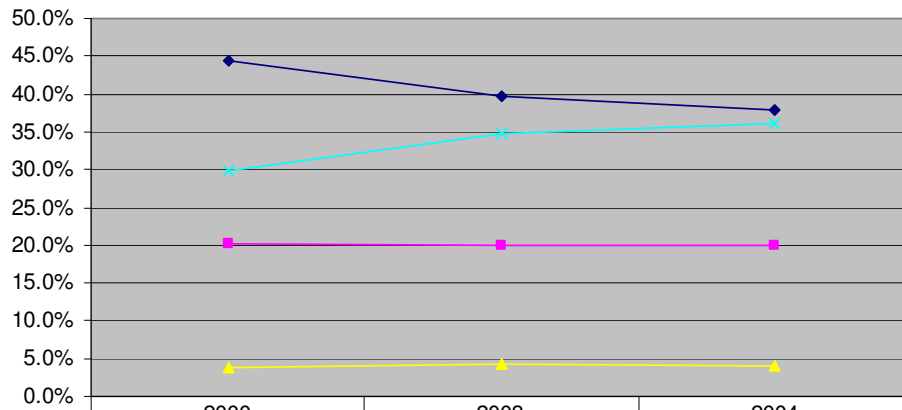
Population by Race: Collin County



| | | | |
|------------------------|-----|-----|-----|
| White | 76% | 72% | 70% |
| African-American | 5% | 6% | 7% |
| Asian/Pacific Islander | 7% | 9% | 9% |
| Hispanic | 10% | 12% | 12% |

Source: US Census American Factfinder Survey

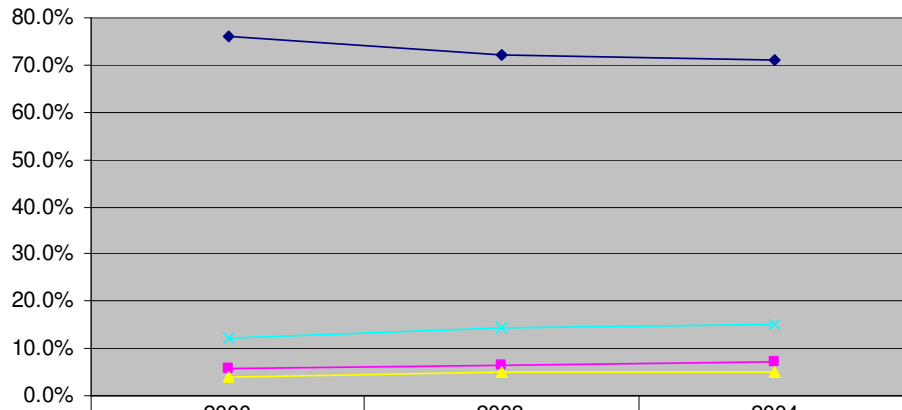
Population by Race: Dallas County



| | 2000 | 2003 | 2004 |
|--------------------------|-------|-------|-------|
| ◆ White | 44.3% | 39.7% | 38.0% |
| ■ African-American | 20.1% | 20.0% | 20.0% |
| ▲ Asian/Pacific Islander | 3.9% | 4.2% | 4.0% |
| ✕ Hispanic | 29.9% | 34.7% | 36.0% |

Source: US Census American Factfinder Survey

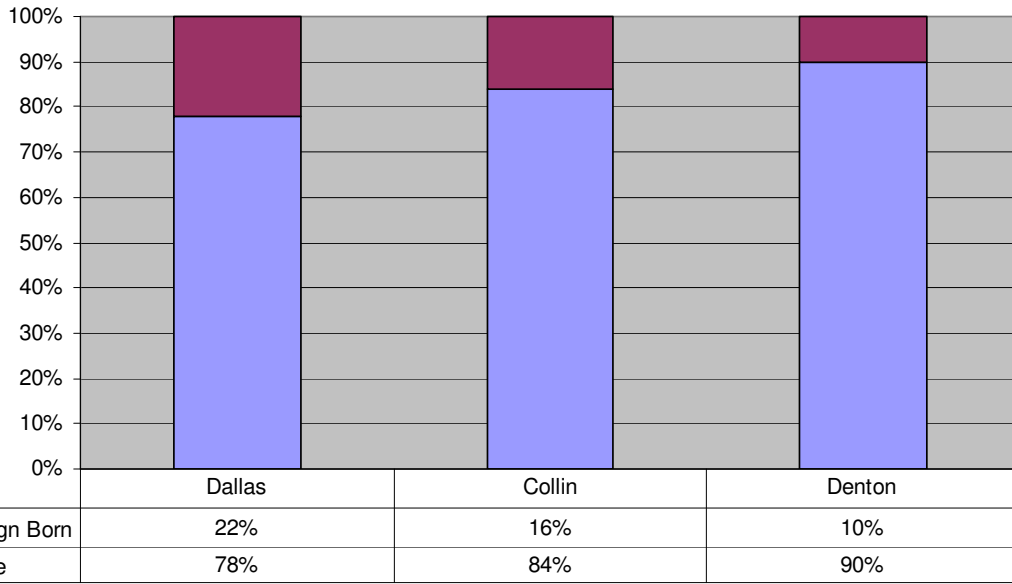
Population by Race: Denton County



| | 2000 | 2003 | 2004 |
|--------------------------|-------|-------|-------|
| ◆ White | 76.0% | 72.0% | 71.0% |
| ■ African-American | 5.8% | 6.4% | 7.0% |
| ▲ Asian/Pacific Islander | 4.0% | 5.2% | 5.0% |
| ✕ Hispanic | 12.2% | 14.4% | 15.0% |

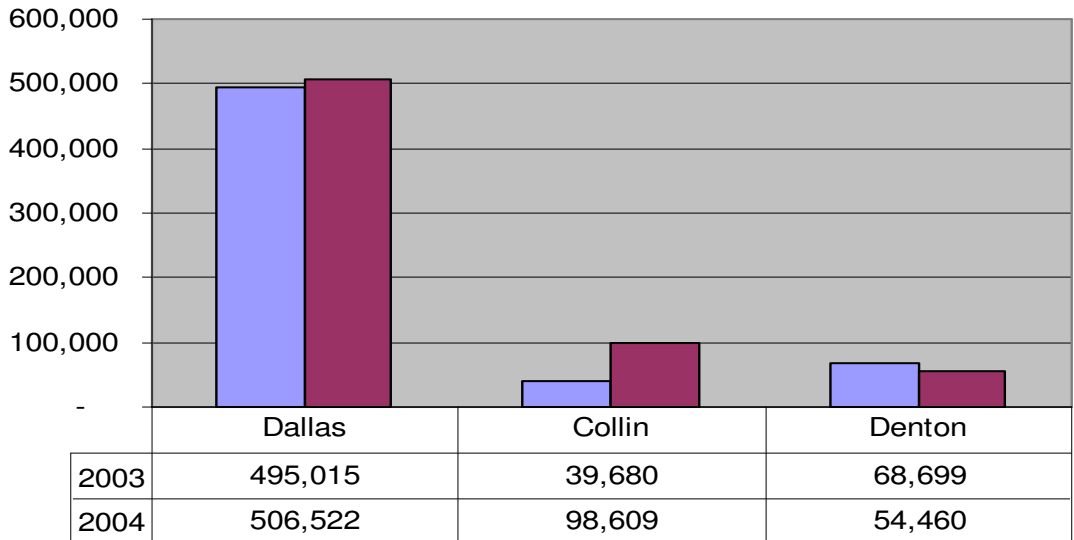
Source: US Census American Factfinder Survey

Population by Place of Birth



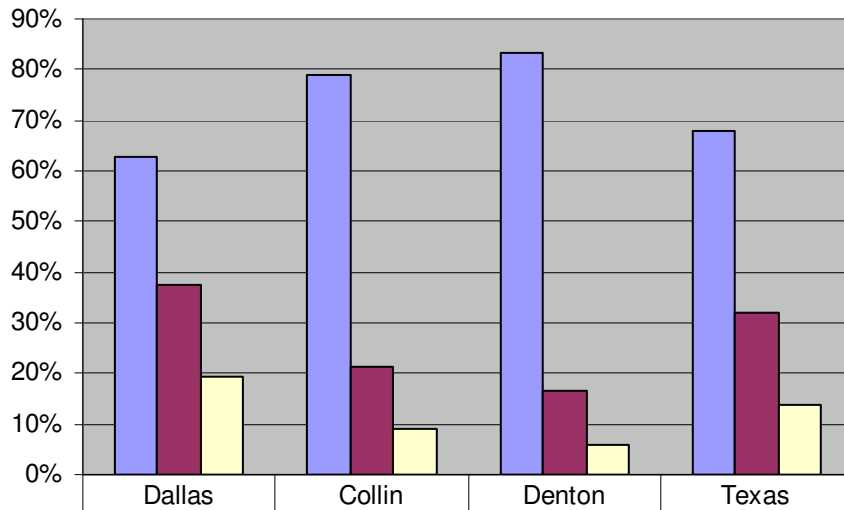
Source: US Census American Factfinder Survey

Population of Foreign Born by County



Source: US Census American Factfinder Survey

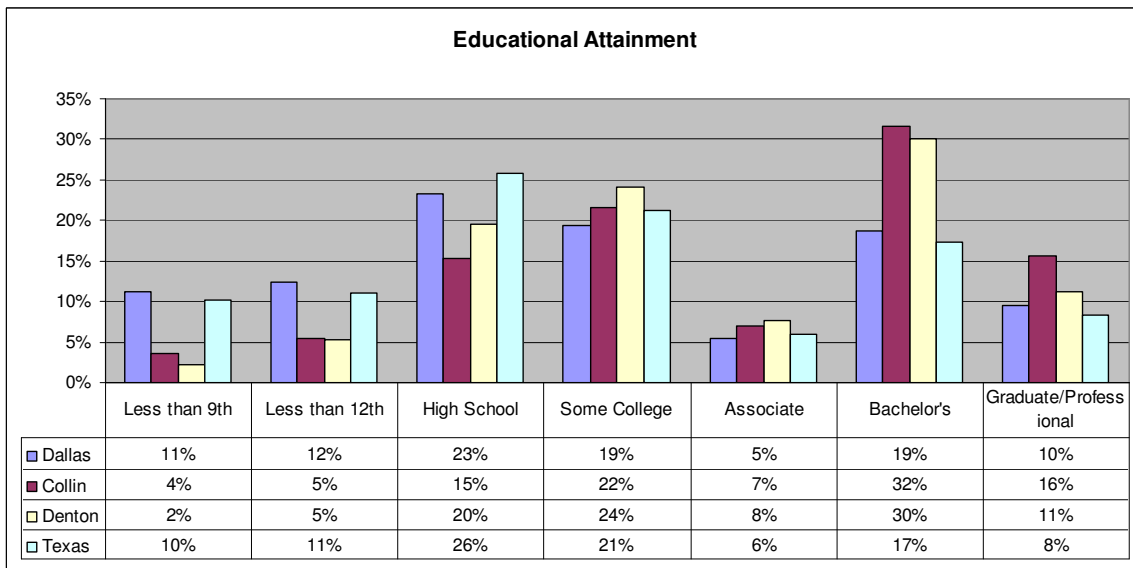
Language Spoken in the Home



| | | | | |
|-------------------------------|-----|-----|-----|-----|
| English Only | 63% | 79% | 83% | 68% |
| Other than English | 37% | 21% | 17% | 32% |
| English Less than "Very Well" | 19% | 9% | 6% | 14% |

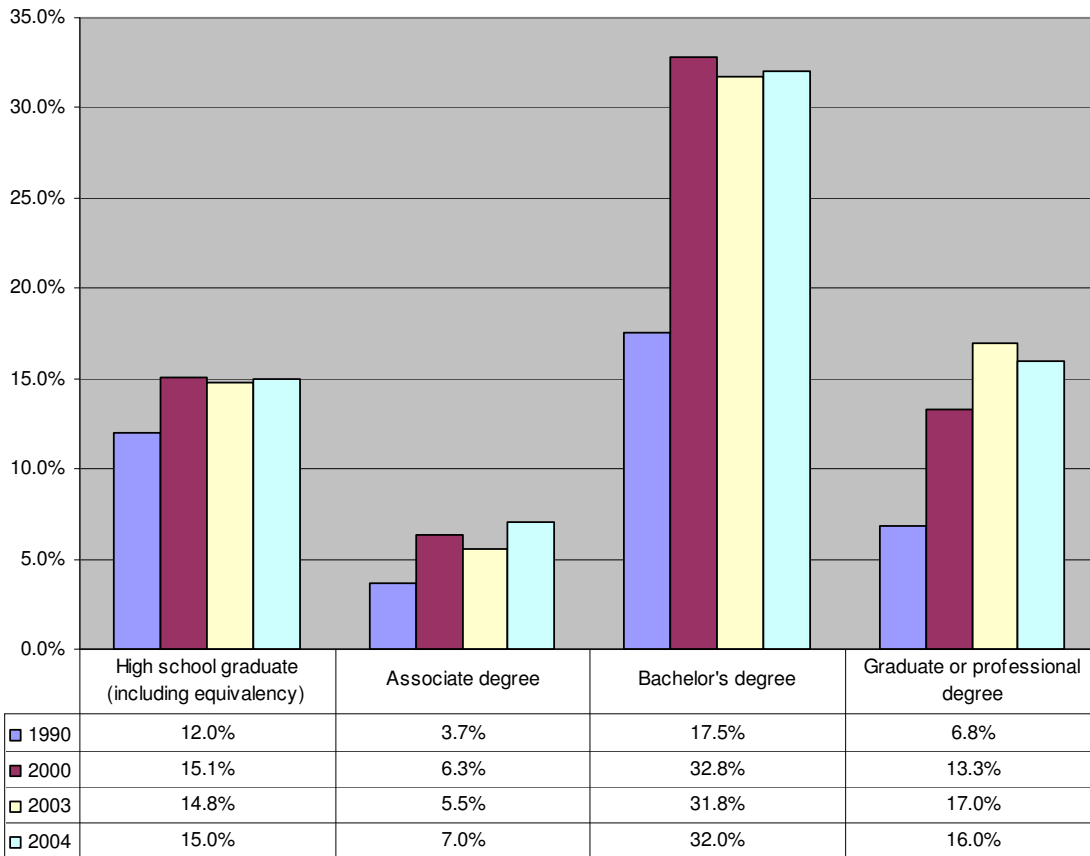
Source: US Census American Factfinder Survey

Educational Attainment



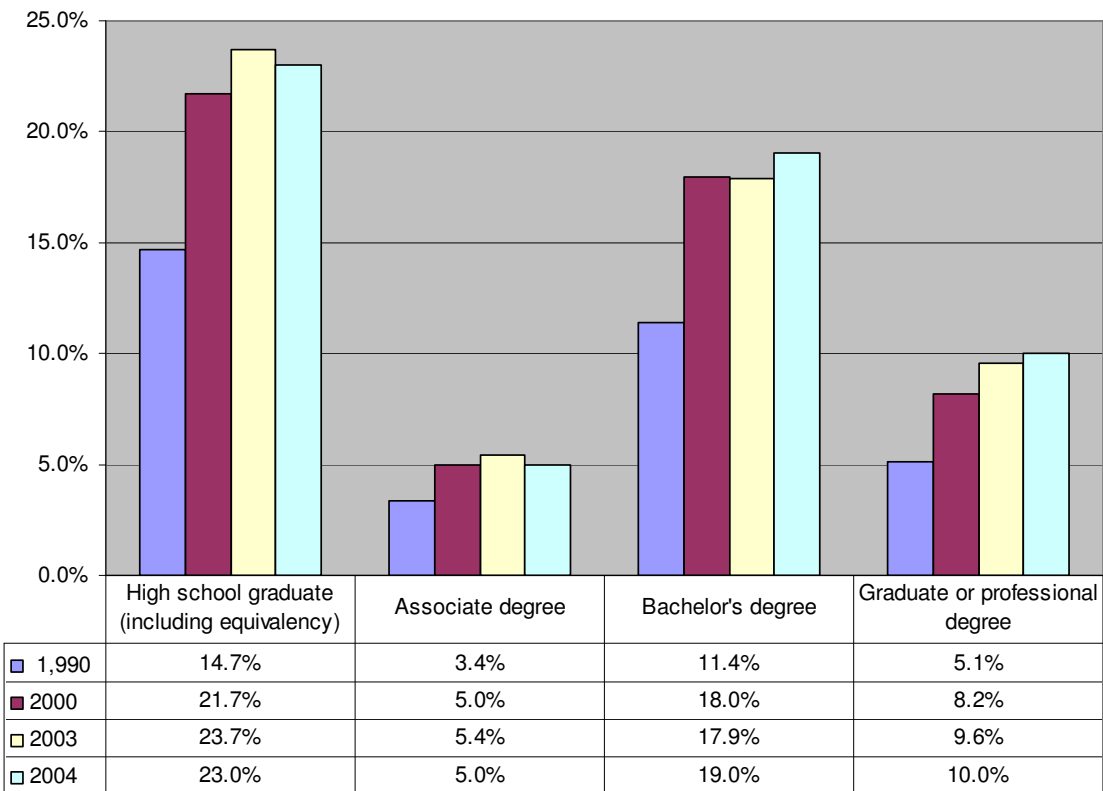
Source: US Census American Factfinder Survey

Educational Attainment Collin County



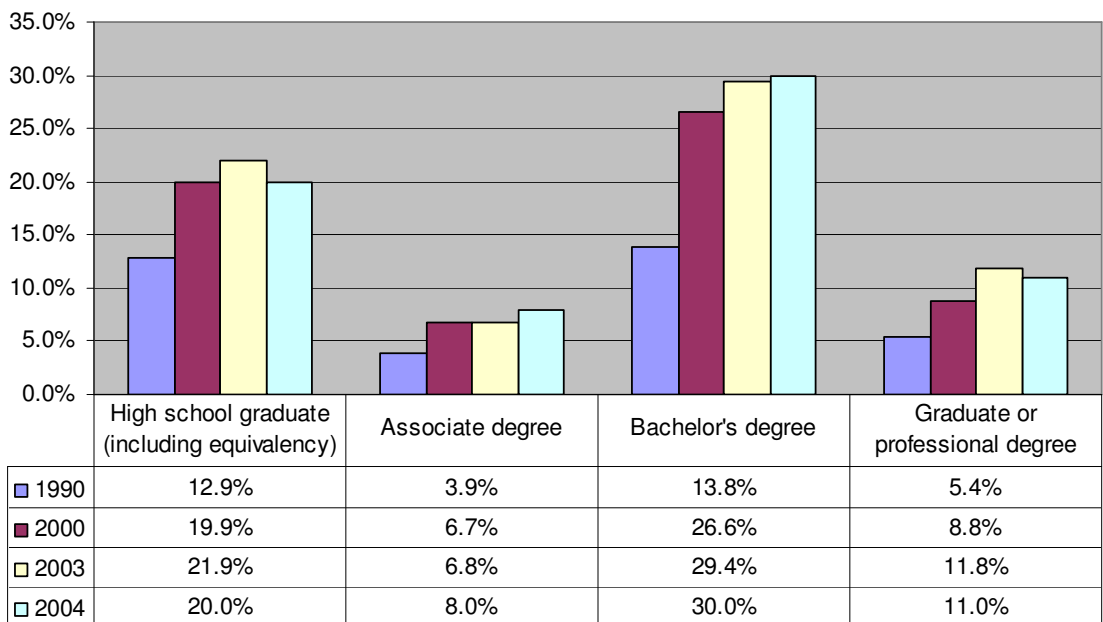
Source: US Census American Factfinder Survey

Educational Attainment Dallas County



Source: US Census American Factfinder Survey

Educational Attainment Denton County



Source: US Census American Factfinder Survey