

United Way of Metropolitan Dallas

*serving Dallas, Collin, Rockwall Counties
and Greater Lewisville*



what matters.™

2006 Community Needs Assessment Building Successful Youth and Families

Legal Services

Legal Services – North Texas Overview

Legal representation encompasses a myriad of services that can greatly change the quality of life for an individual. These services can include representing an abused spouse, preventing an abusive parent from accessing their children and ensuring that an immigrant is going through the correct procedures and paperwork to become a U.S. Citizen.

Despite the importance of legal service in our communities, legal representation is often difficult to obtain for those who need it most. An individual's income level or understanding of the English language and United States laws can affect access to legal services.


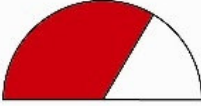
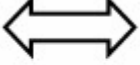
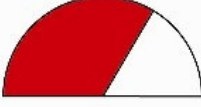


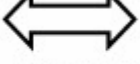


Over the past few years, the North Texas Region has consistently seen an increase in its immigrant population. This coupled with increased crime rates and rising poverty levels will likely create a greater need for legal services.

The following section discusses the need for legal services in terms of common indicators for which families and individuals typically have difficulty in accessing legal services.

Trends

- Across the region, the number of initial intakes alleging abuse/neglect has gradually increased from 1997 (16,262) to 2005 (28,642) with an overall increase of 76% over that time period. The population in the UWMD 4 county service area has increased 10% from 2000-2004.
- Throughout the region, poverty is highest in female-headed households. The increase in single, female head of households indicate that a growing number of families will be unable to afford legal services
- 14% of Texas residents speak English less than very well
- The eviction rate has increased gradually across the region, with an overall rate increase of 58% from 2000-2004.

Legal Services: Indicators and Trends

INDICATOR	SUMMARY	TREND	CONDITION
Crime	The rate of total violent crimes from 1999-2004 has decreased in all 4 UWMD service areas. The rate of reported rapes from 1999-2004 has decreased in all counties but Collin County.	 Same or Mixed	 Concerned
Family Violence	The rate of family violence fluctuated between 1999 and 2004 and is lower in all counties but Rockwall County. Family violence is more than twice as prevalent in Dallas County than in the suburban counties (Collin County and Denton County).	 Same or Mixed	 Concerned
Financial Strength	Although the economy is improving, unemployment is increasing as well as the poverty rate. This translates into more families needing assistance from the community and the government for food and housing.	 Worsening	 Critical
Changing Population	The needs of our community continue to be affected by changing demographics such as race, place of birth (native or foreign born) and educational attainment.	 Same or Mixed	N/A
Evictions	The rate of evictions rose dramatically between 2000 and 2004 in each county. However, there were vast differences in the rate of evictions among the counties.	 Worsening	 Critical

Legal Services: By County

Collin County

- The rate of family violence in Collin County has fluctuated from year to year with a slight decrease from 2003-2004. The overall rate dropped 12% from 1999-2004. Collin County and Denton County had virtually identical trend lines from 1999-2004.
- While poverty remains lower in Collin County than statewide and in Dallas County, the percentage of Collin County residents in poverty has increased each year since 2000 and is currently higher (6.3%) than in 1990 (5.8%).
- 9% of Collin County residents speak English less than well, half the percentage as in Dallas County.
- In 2004, nearly 16% of the population of Collin County was foreign born. While the percentage of foreign born has decreased since 2003, the actual number of foreign born has increased 155%. Language barriers, coupled with a lack of familiarity with U.S. law and customs, may provide obstacles for these individuals in accessing legal services.

Dallas County

- The rate of family violence in Dallas County has decreased by 25% from 1281 in 1999 to 963 in 2004.
- In Dallas, the number of initial intakes alleging abuse/neglect has fluctuated from 1997-2005, with an increase from 2003-2005. The overall number increased 56% from 1997 (13,091) to 2005 (20,479).
- Dallas County has consistently had the highest percentage of families and individuals in poverty in the region (Dallas County-17%, Denton County-6.8%, Collin County-6.3%).
- Dallas has the region's highest percentages of female headed households (16%), and householders living alone (28%). Nearly half (41%) of female-headed households with children under the age of 5 are in poverty in Dallas County.
- Dallas County's foreign born population has increased slightly from 2003-2004. In 2004, 22.4% of the population of Dallas County was foreign-born, whereas in 2003, 22% of the population was foreign-born. Language barriers, coupled with a lack of familiarity with U.S. law and customs, may provide obstacles for these individuals in accessing legal services.
- 19% of Dallas County residents do not speak English "very well", the largest percentage in the UWMD service region.

Denton County

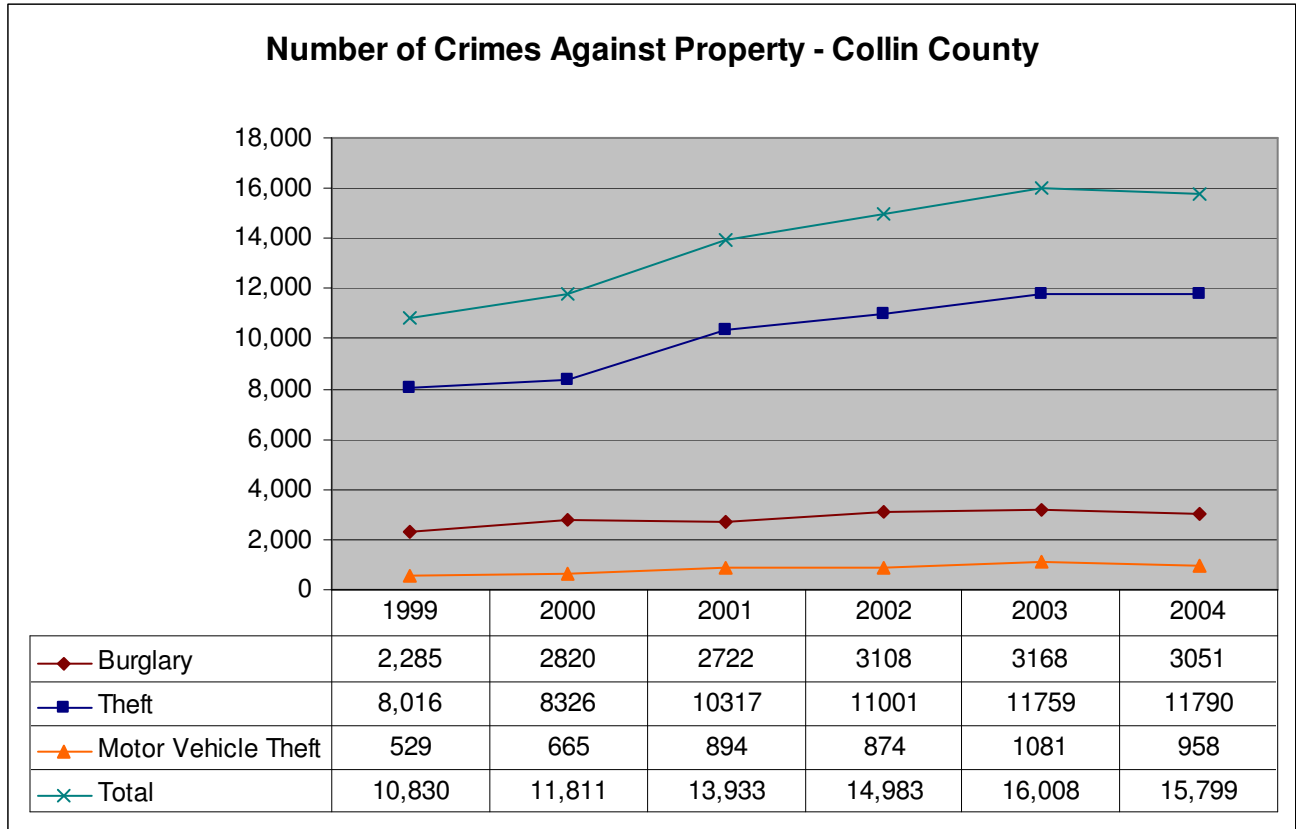
- The rate of confirmed cases of child abuse in Denton County has fluctuated significantly over the years with an increase from 273 in 2003 to 963 in 2005. The overall rate increased 154% from 1997-2005.
- The percentage of all families and families with children under the age of 18 in poverty is the lowest in Denton County. The percentage of female headed families in poverty is higher than in Collin County but remains well below the Dallas County percentage. Unlike in the other counties, poverty has consistently decreased in Denton County from a high of 8.2% in 1990 to its current level of 6.8%.
- In 2004, 10% of the Denton County population was foreign-born, while 14% of the population was foreign born in 2003. Denton County is the only county in the four county region that had a decrease in its foreign born population.
- Denton County has the lowest percentages of residents who speak English less than very well (6%).

Rockwall County

- The rate of family violence in Rockwall County had an upward trend starting in 2000 (449) with a sharp 35% increase in 2001 (604). The rate dropped by 19% from 604 in 2001 to 488 in 2002, but started to increase again from 472 in 2003 to 518 in 2004. The overall rate increased 25% from 415 in 1999 to 518 in 2004.
- The number of initial intakes alleging abuse/neglect in Rockwall County increased from 1997-2000 with a slight decrease in 2001. The increasing trend began again from 2002-2005 with a 103% increase from 1997-2005.

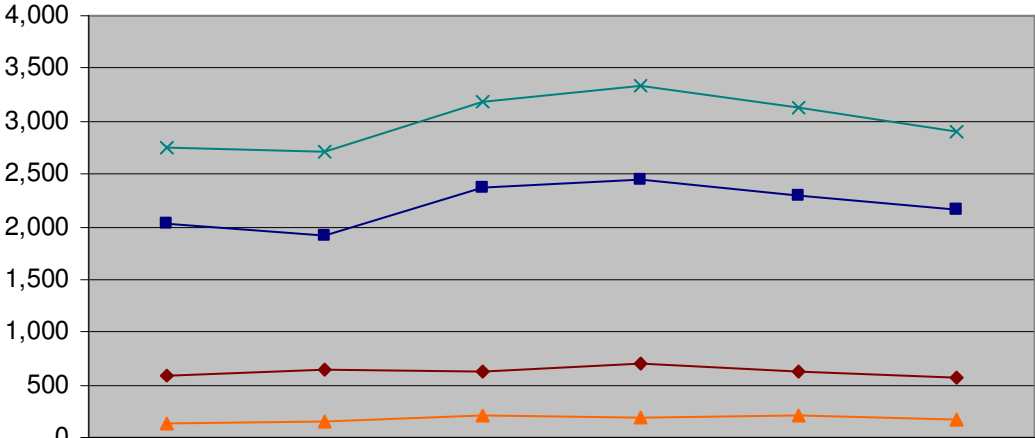
Legal Services: Supporting Data

Crime



Source: Texas Department of Public Safety

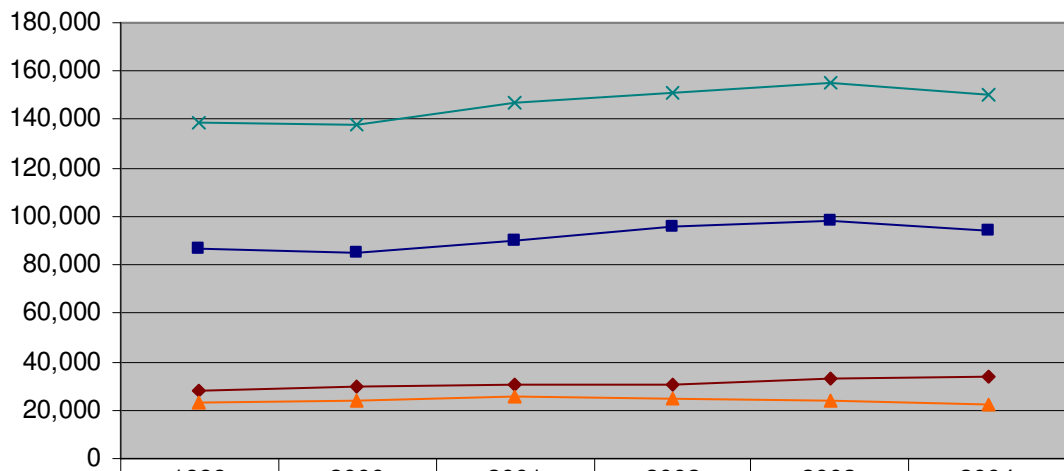
Collin County - Rate of Crimes Against Property (Per 100,000)



	1999	2000	2001	2002	2003	2004
—◆— Burglary	580	648	623	692	619	562
—■— Theft	2,034	1,914	2,362	2,450	2,297	2,170
—▲— Motor Vehicle Theft	134	153	205	195	211	176
—×— Total	2,748	2,716	3,190	3,336	3,127	2,908

Source: Texas Department of Public Safety

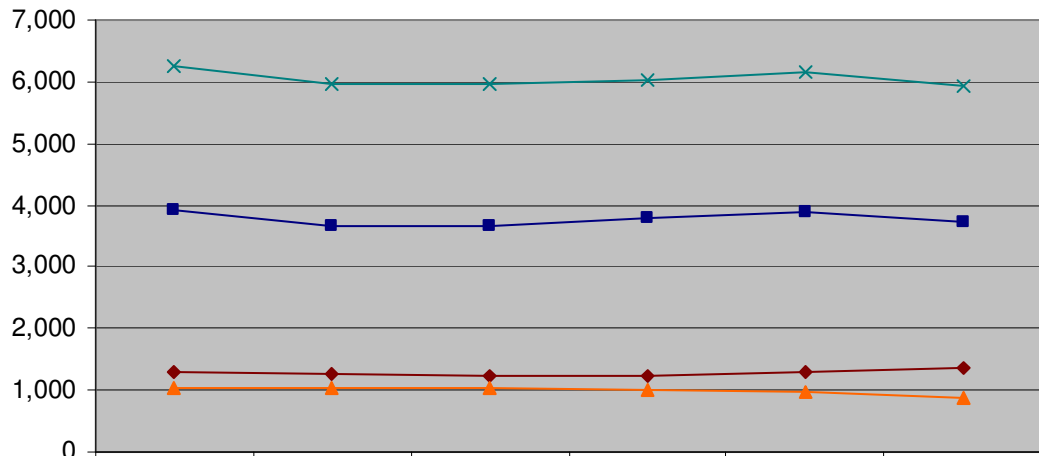
Number of Crimes Against Property - Dallas County



	1999	2000	2001	2002	2003	2004
—◆— Burglary	28,477	29,522	30,694	30,958	33,114	34,124
—■— Theft	86,880	84,915	90,281	95,375	98,274	94,204
—▲— Motor Vehicle Theft	23,193	23,627	25,641	25,044	24,134	22,151
—×— Total	138,550	138,064	146,616	151,377	155,522	150,479

Source: Texas Department of Public Safety

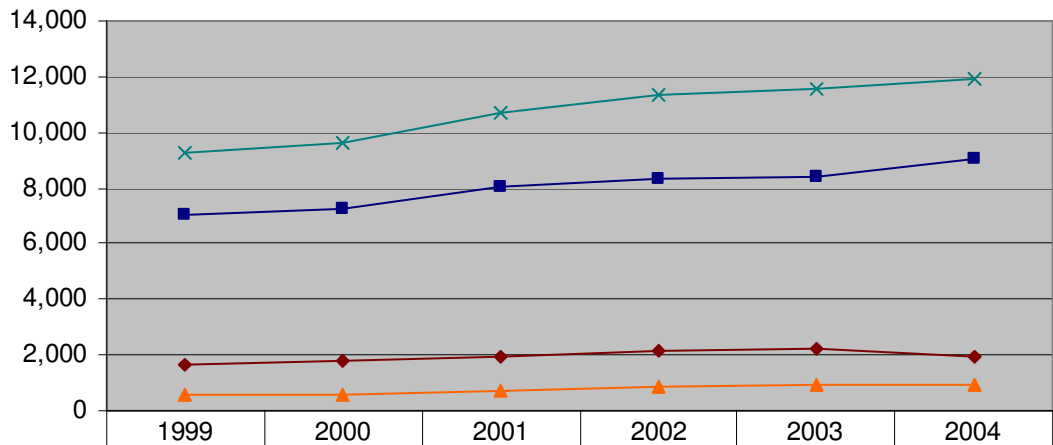
Dallas County - Rate of Crimes Against Property (Per 100,000)



	1999	2000	2001	2002	2003	2004
—◆— Burglary	1,287	1,276	1,246	1,231	1,312	1,348
—■— Theft	3,925	3,671	3,666	3,792	3,894	3,720
—▲— Motor Vehicle Theft	1,048	1,021	1,041	996	956	875
—×— Total	6,260	5,968	5,953	6,018	6,162	5,943

Source: Texas Department of Public Safety

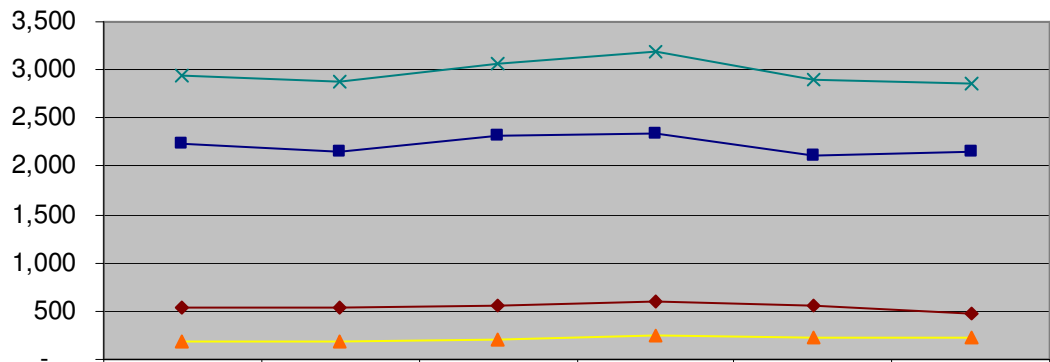
Number of Crimes Against Property - Denton County



◆ Burglary	1,658	1,829	1,922	2,168	2,209	1,954
■ Theft	7,046	7,225	8,048	8,333	8,411	9,027
▲ Motor Vehicle Theft	555	592	721	868	937	953
× Total	9,259	9,646	10,691	11,369	11,557	11,934

Source: Texas Department of Public Safety

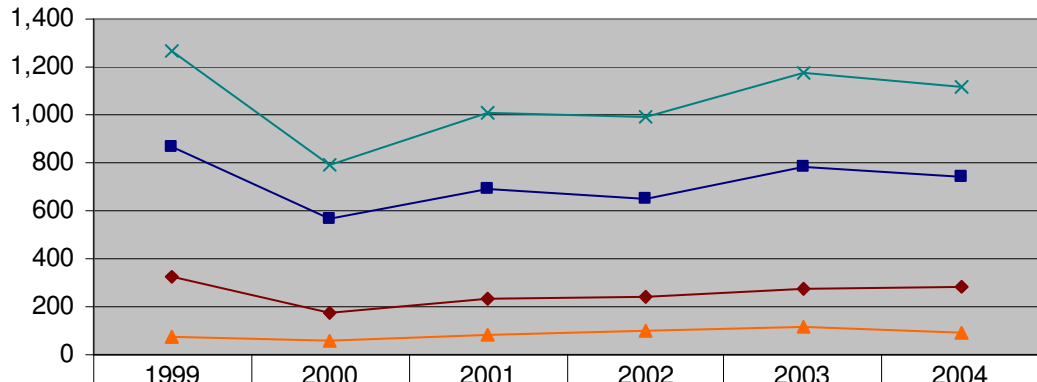
Denton County - Rate of Crimes Against Property (Per 100,000)



◆ Burglary	528	544	552	608	556	468
■ Theft	2,244	2,148	2,310	2,338	2,115	2,161
▲ Motor Vehicle Theft	177	176	207	244	236	228
× Total	2,949	2,868	3,068	3,190	2,907	2,857

Source: Texas Department of Public Safety

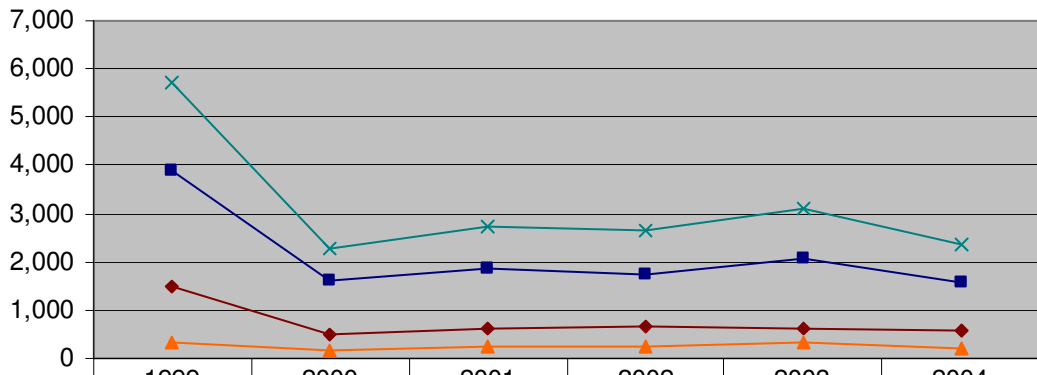
Number of Crimes Against Property - Rockwall County



◆ Burglary	326	173	234	243	271	282
■ Theft	867	565	688	652	784	741
▲ Motor Vehicle Theft	75	57	87	100	118	95
× Total	1,268	795	1,009	995	1,173	1,118

Source: Texas Department of Public Safety

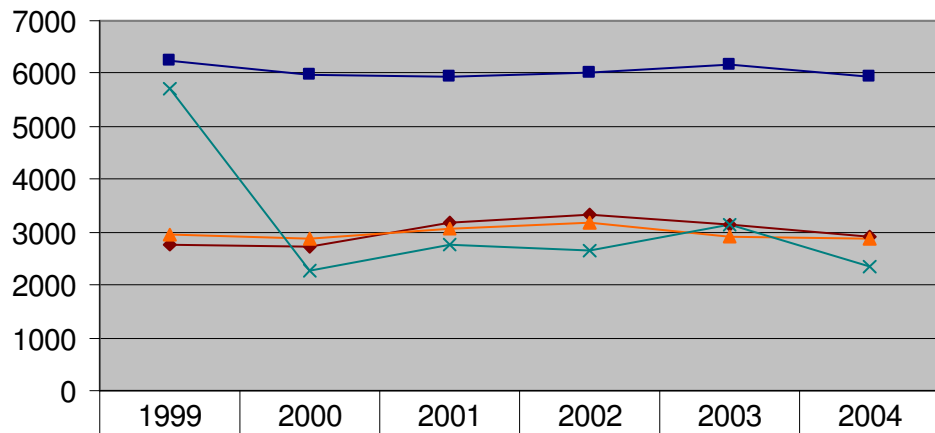
Rockwall County - Rate of Crimes Against Property (Per 100,000)



◆ Burglary	1,471	492	637	648	621	596
■ Theft	3,913	1,607	1,873	1,738	2,090	1,566
▲ Motor Vehicle Theft	338	162	237	267	315	201
× Total	5,723	2,261	2,747	2,652	3,127	2,362

Source: Texas Department of Public Safety

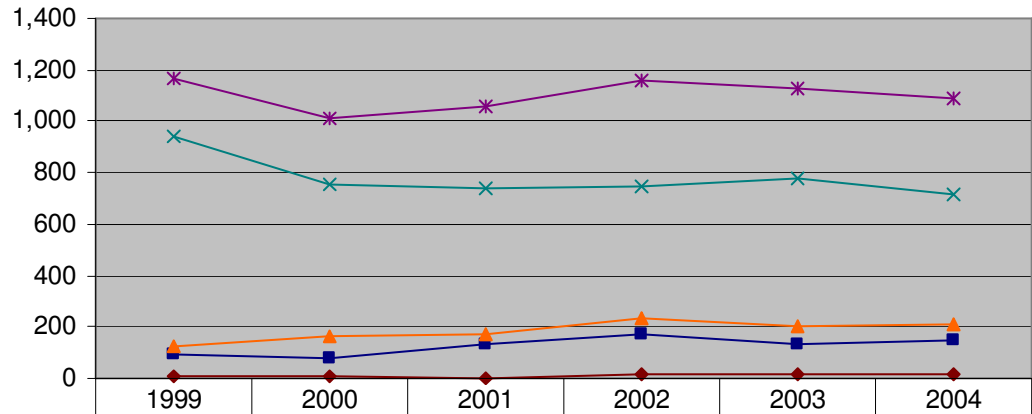
Region - Rate of Crimes Against Property (PER 100,000)



◆ Collin	2748	2716	3190	3336	3127	2908
■ Dallas	6260	5968	5953	6018	6162	5943
▲ Denton	2949	2868	3068	3190	2907	2857
✕ Rockwall	5723	2261	2747	2652	3127	2362

Source: Texas Department of Public Safety

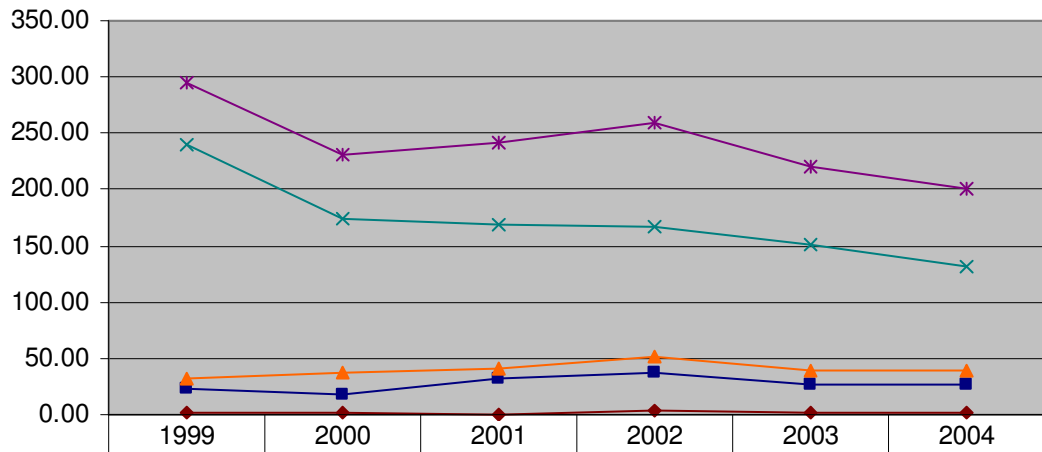
Collin County - Number of Violent Crimes



◆ Murder	4	8	2	13	12	12
■ Rape	91	80	136	171	134	146
▲ Robbery	125	164	175	231	202	212
✕ Agg. Assault	945	756	741	746	776	719
✱ Total Violent Crimes	1,165	1,008	1,054	1,161	1,124	1,089

Source: Texas Department of Public Safety

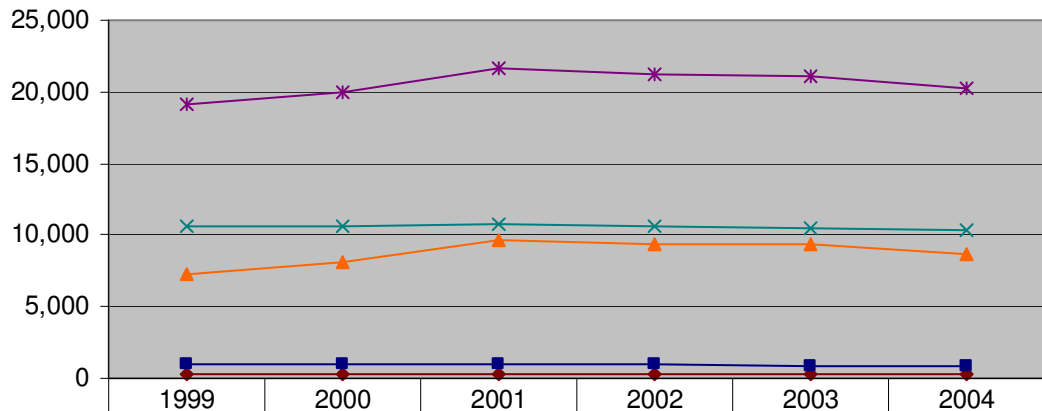
Collin County - Rate of Violent Crimes (Per 100,000)



◆ Murder	1.02	1.84	0.46	2.89	2.34	2.21
■ Rape	23.09	18.39	31.13	38.08	26.17	26.87
▲ Robbery	31.72	37.71	40.06	51.44	39.45	39.02
× Agg. Assault	239.81	173.83	169.63	166.12	151.56	132.33
* Total Violent Crimes	295.63	231.77	241.29	258.53	219.53	200.43

Source: Texas Department of Public Safety

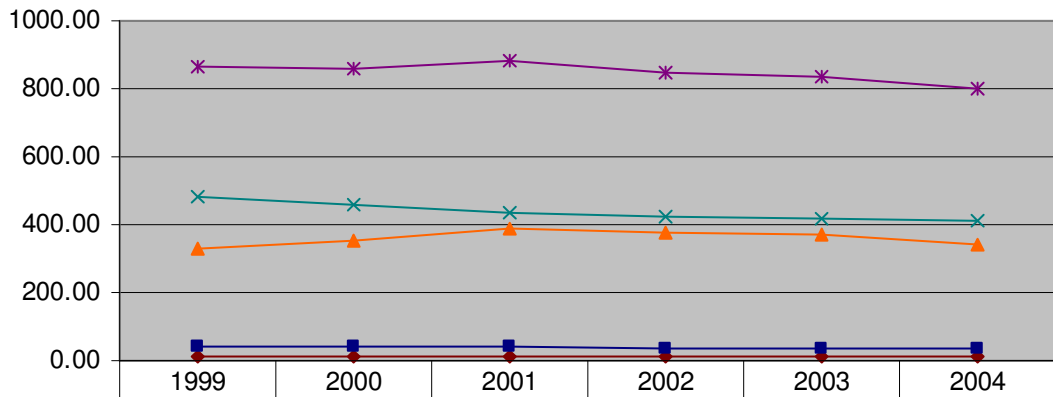
Dallas County - Number of Violent Crimes



◆ Murder	221	267	285	241	261	295
■ Rape	954	932	975	960	906	858
▲ Robbery	7,321	8,134	9,628	9,421	9,381	8,669
× Agg. Assault	10,656	10,577	10,780	10,671	10,539	10,398
* Total Violent Crimes	19,152	19,910	21,668	21,293	21,087	20,220

Source: Texas Department of Public Safety

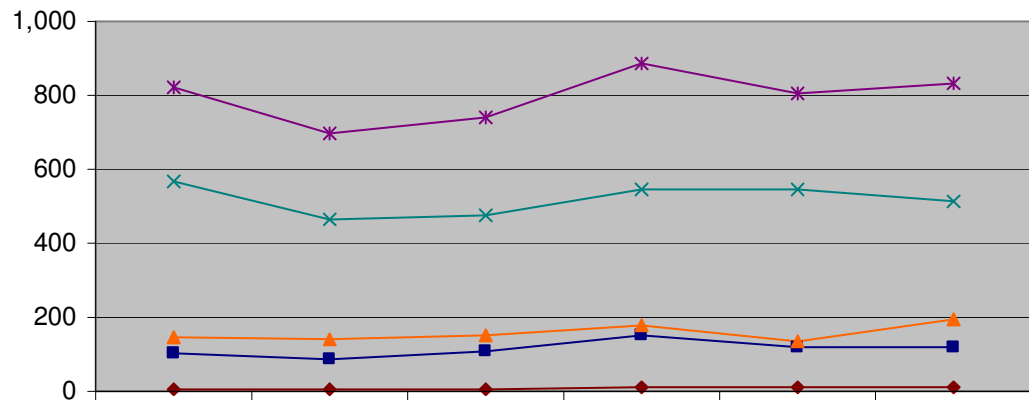
Dallas County - Rate of Violent Crimes (Per 100,000)



◆ Murder	9.99	11.54	11.57	9.58	10.34	11.65
■ Rape	43.10	40.29	39.59	38.17	35.90	33.88
▲ Robbery	330.77	351.61	390.95	374.55	371.67	342.35
× Agg. Assault	481.45	457.21	437.73	424.25	417.55	410.62
* Total Violent Crimes	865.31	860.64	879.84	846.55	835.46	798.50

Source: Texas Department of Public Safety

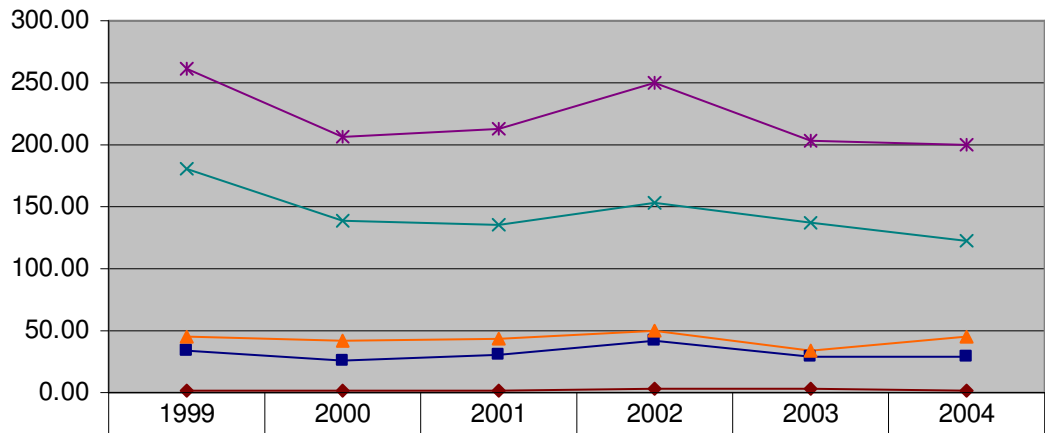
Denton County - Number of Violent Crimes



◆ Murder	5	5	5	12	11	10
■ Rape	104	86	109	152	117	120
▲ Robbery	144	141	153	181	134	192
× Agg. Assault	568	464	474	544	546	511
* Total Violent Crimes	821	696	741	889	808	833

Source: Texas Department of Public Safety

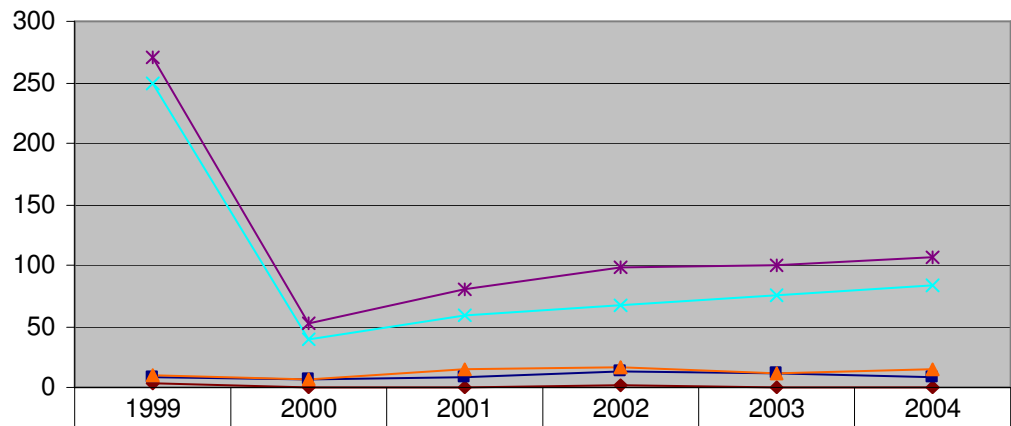
Denton County - Rate of Violent Crimes (Per 100,000)



◆ Murder	1.59	1.49	1.43	3.37	2.77	2.39
■ Rape	33.13	25.57	31.28	42.65	29.43	28.73
▲ Robbery	45.87	41.93	43.91	50.79	33.70	45.96
✕ Agg. Assault	180.93	137.98	136.02	152.66	137.33	122.33
✱ Total Violent Crimes	261.52	206.97	212.64	249.47	203.22	199.41

Source: Texas Department of Public Safety

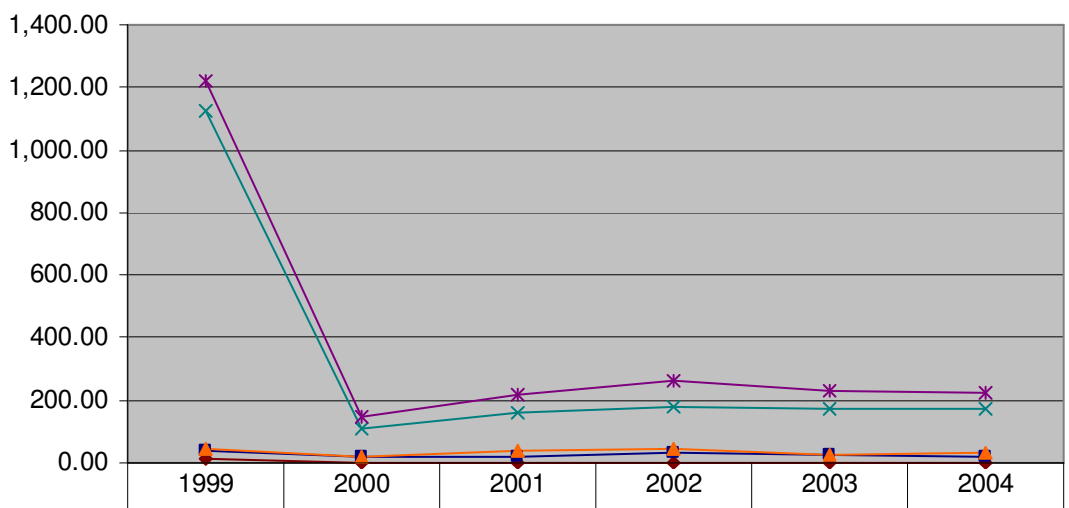
Rockwall County - Number of Violent Crimes



◆ Murder	3	0	0	1	0	0
■ Rape	8	6	8	13	12	8
▲ Robbery	10	7	14	16	12	15
✕ Agg. Assault	250	39	59	68	76	83
✱ Total Violent Crimes	271	52	81	98	100	106

Source: Texas Department of Public Safety

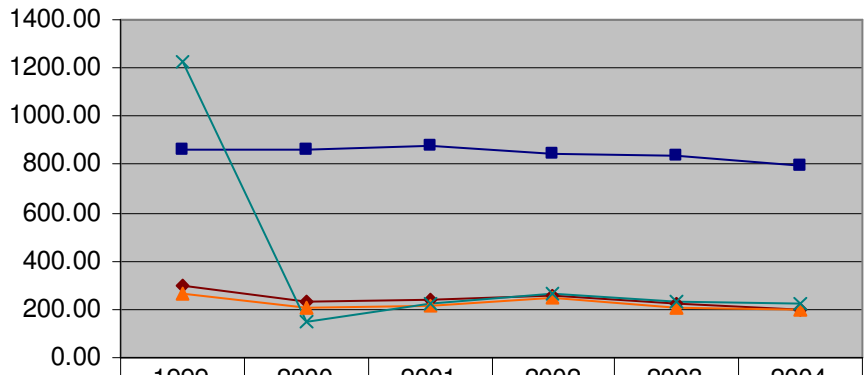
Rockwall County - Rate of Violent Crimes (Per 100,000)



◆ Murder	13.54	0.00	0.00	2.67	0.00	0.00
■ Rape	36.10	17.06	21.78	34.66	27.49	16.90
▲ Robbery	45.13	19.90	38.12	42.65	27.49	31.70
× Agg. Assault	1,128.26	110.90	160.64	181.28	174.11	175.38
* Total Violent Crimes	1,223.03	147.86	220.55	261.25	229.10	223.98

Source: Texas Department of Public Safety

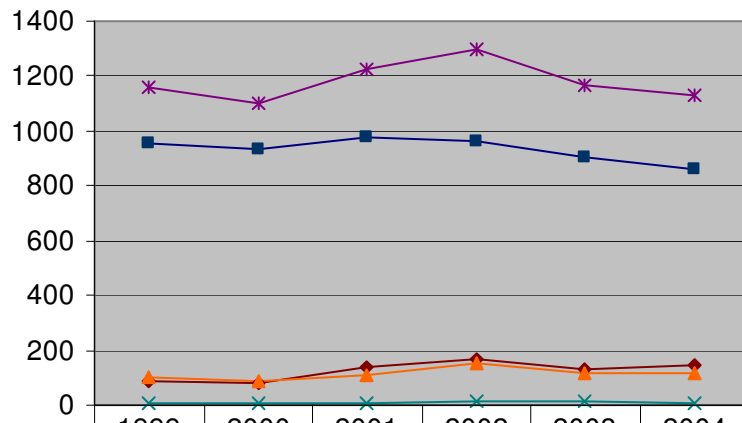
Rate of Total Violent Crimes by County (Per 100,000)



	1999	2000	2001	2002	2003	2004
◆ Collin	295.63	231.77	241.29	258.53	219.53	200.43
■ Dallas	865.31	860.64	879.84	846.55	835.46	798.50
▲ Denton	261.52	206.97	212.64	249.47	203.22	199.41
× Rockwall	1,223.03	147.86	220.55	261.25	229.10	223.98

Source: Texas Department of Public Safety

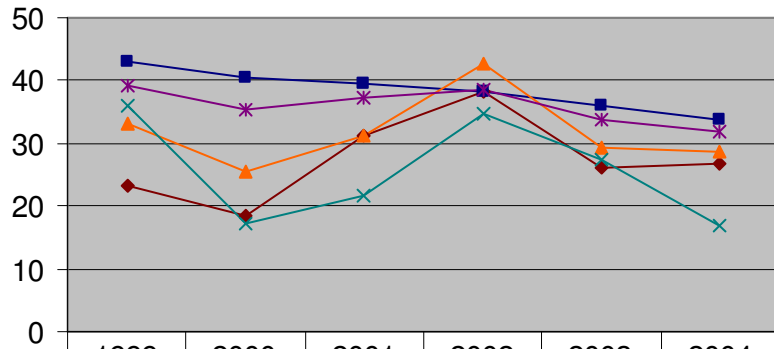
Number of Reported Rapes



	1999	2000	2001	2002	2003	2004
◆ Collin County	91	80	136	171	134	146
■ Dallas County	954	932	975	960	906	858
▲ Denton County	104	86	109	152	117	120
× Rockwall County	8	6	8	13	12	8
* Region	1157	1104	1228	1296	1169	1132

Source: Texas Department of Public Safety

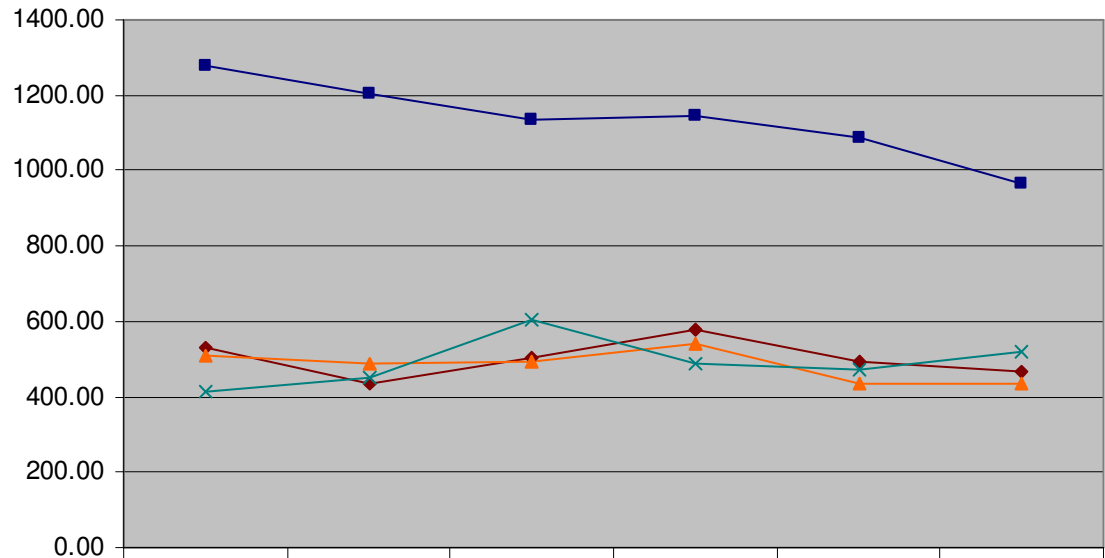
Rate of Reported Rapes (Per 100,000)



	1999	2000	2001	2002	2003	2004
—◆— Collin County	23.09	18.39	31.13	38.08	26.17	26.87
—■— Dallas County	43.1	40.29	39.59	38.17	35.9	33.88
—▲— Denton County	33.13	25.47	31.28	42.65	29.43	28.73
—×— Rockwall County	36.1	17.06	21.78	34.66	27.49	16.90
—*— Region	39.31	35.39	37.38	38.59	33.62	31.97

Source: Texas Department of Public Safety

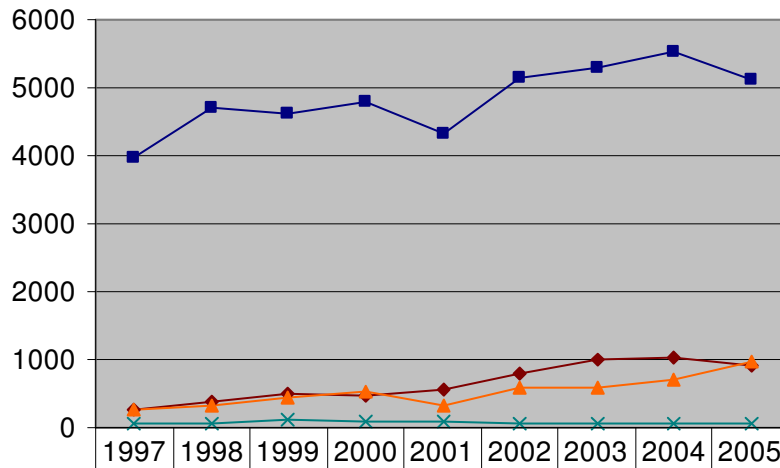
Rate of Family Violence (Per 100,000)



	1999	2000	2001	2002	2003	2004
◆ Collin County	530.62	433.41	505.24	576.74	495.30	468.60
■ Dallas County	1280.62	1206.07	1132.93	1146.56	1088.82	963.06
▲ Denton County	510.63	487.68	493.01	540.76	434.61	436.89
× Rockwall County	415.20	449.27	604.46	487.84	471.94	517.70

Source: Texas Department of Public Safety

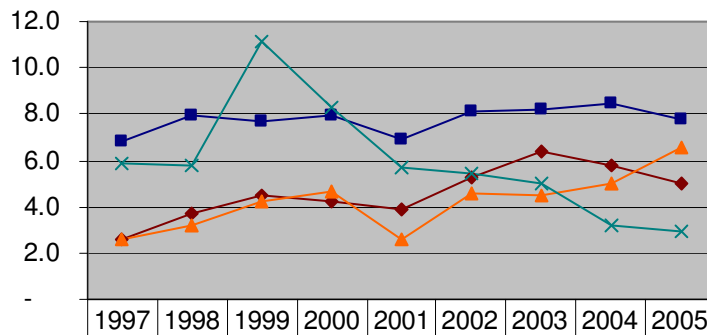
Number of Confirmed Victims of Abuse/Neglect



◆ Collin County	276	394	497	483	561	798	989	1032	925
■ Dallas County	3969	4709	4611	4802	4337	5138	5292	5518	5116
▲ Denton County	273	329	450	516	321	574	576	700	963
× Rockwall County	60	60	131	90	75	72	68	50	48

Source: Texas Department of Family and Protective Services

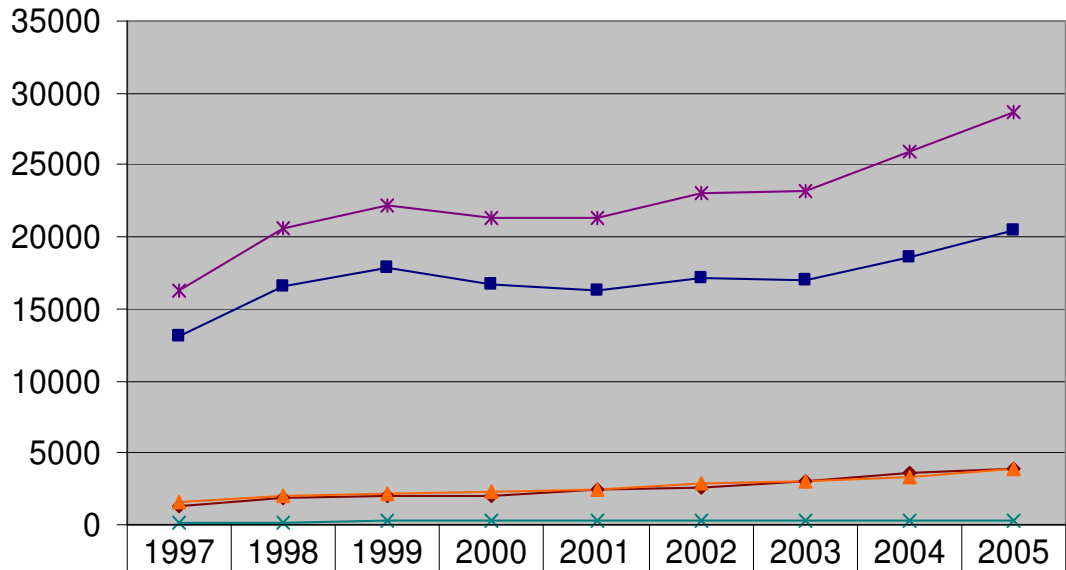
Confirmed Cases of Child Abuse (Per 1,000 Children)



◆ Collin County	2.6	3.7	4.5	4.3	3.9	5.3	6.4	5.8	5.0
■ Dallas County	6.8	8.0	7.7	7.9	6.9	8.1	8.2	8.5	7.8
▲ Denton County	2.6	3.2	4.2	4.7	2.6	4.6	4.5	5.0	6.6
× Rockwall County	5.9	5.8	11.1	8.2	5.7	5.4	5.0	3.2	2.9

Source: Texas Department of Family and Protective Services

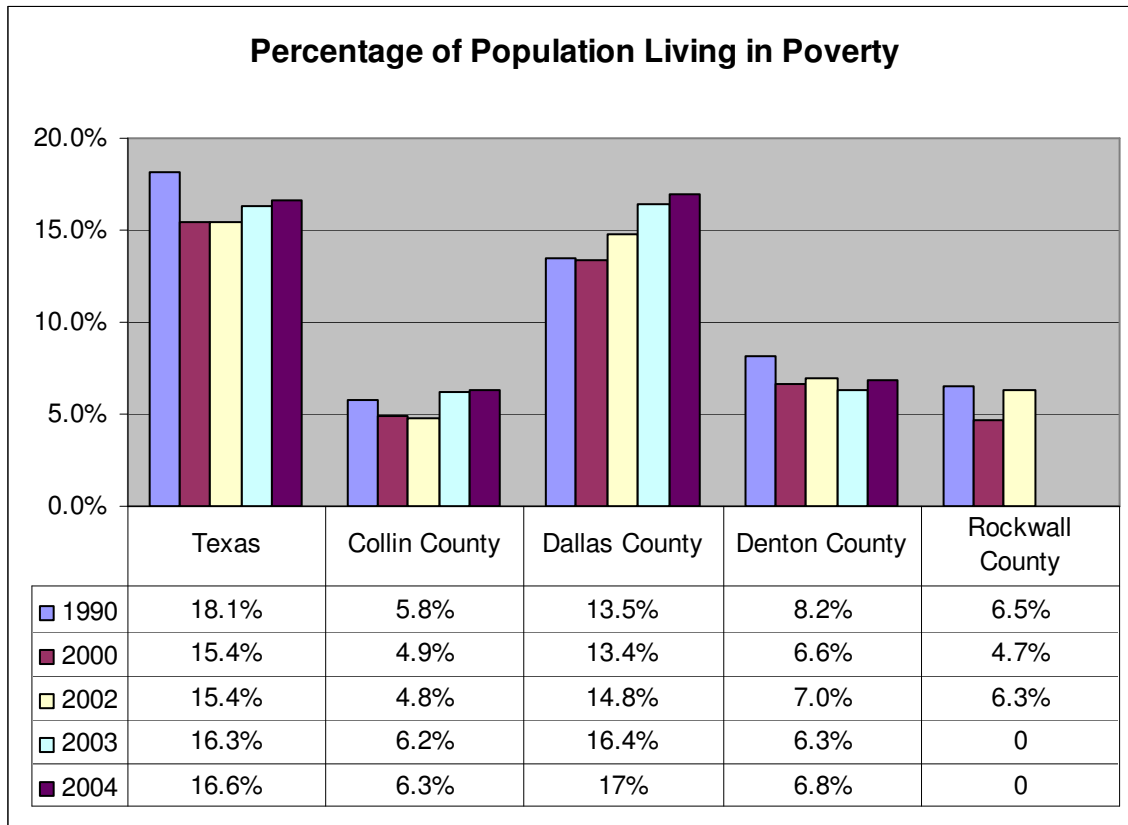
Number of Initial Intakes Alleging Abuse/Neglect



	1997	1998	1999	2000	2001	2002	2003	2004	2005
—◆— Collin County	1348	1815	1954	2051	2415	2630	2994	3647	3894
—■— Dallas County	13091	16623	17867	16669	16210	17186	16927	18589	20479
—▲— Denton County	1646	1951	2126	2281	2515	2889	3009	3297	3910
—×— Rockwall County	177	214	269	351	246	292	327	342	359
—*— Region	16262	20603	22216	21352	21386	22997	23257	25875	28642

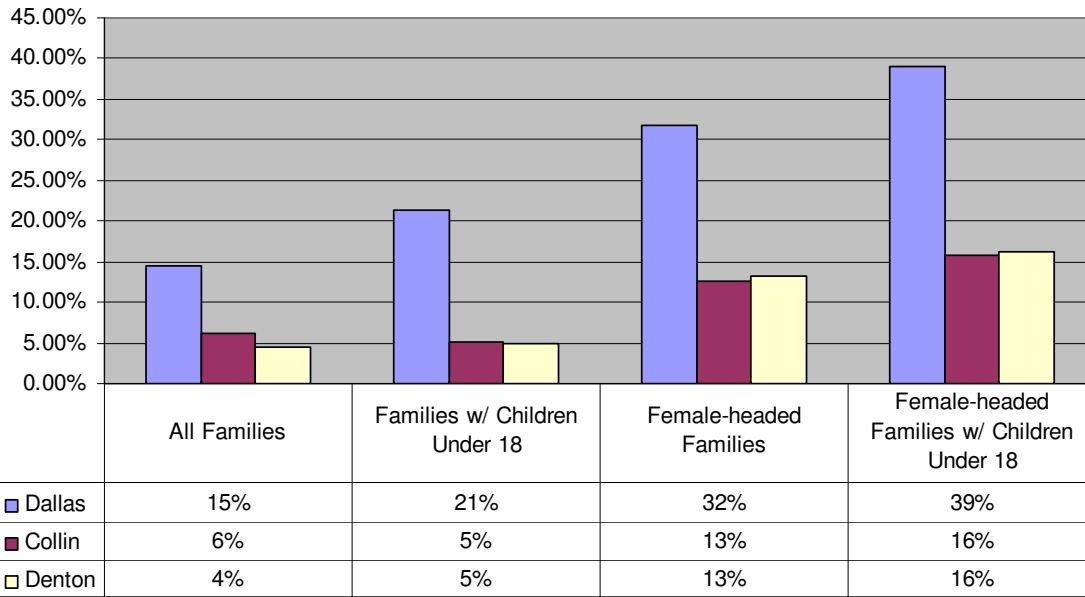
Source: Texas Department of Family and Protective Services

Financial Strength



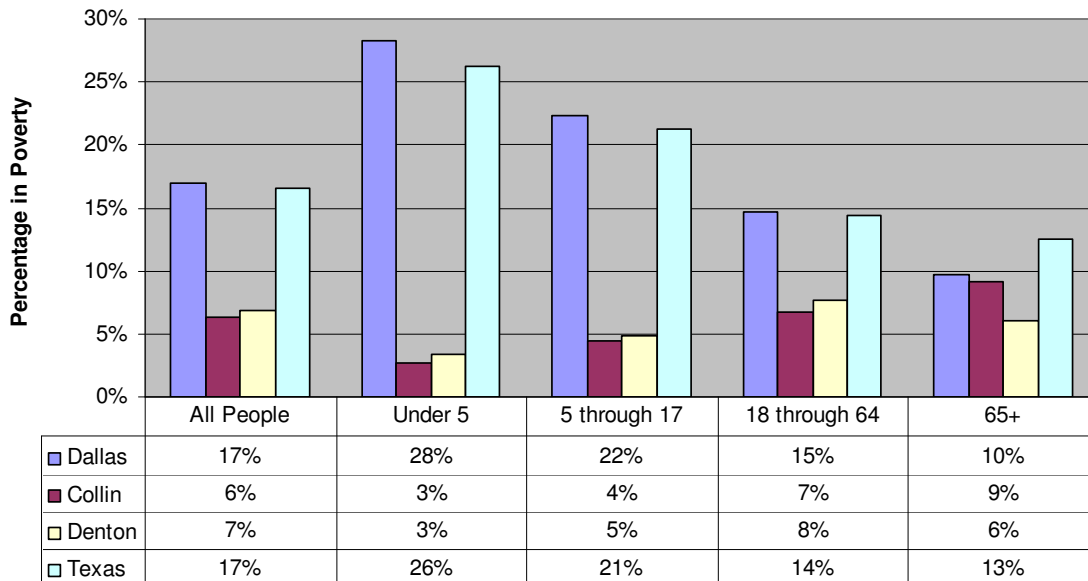
Source: US Census American Factfinder Survey

Families in Poverty

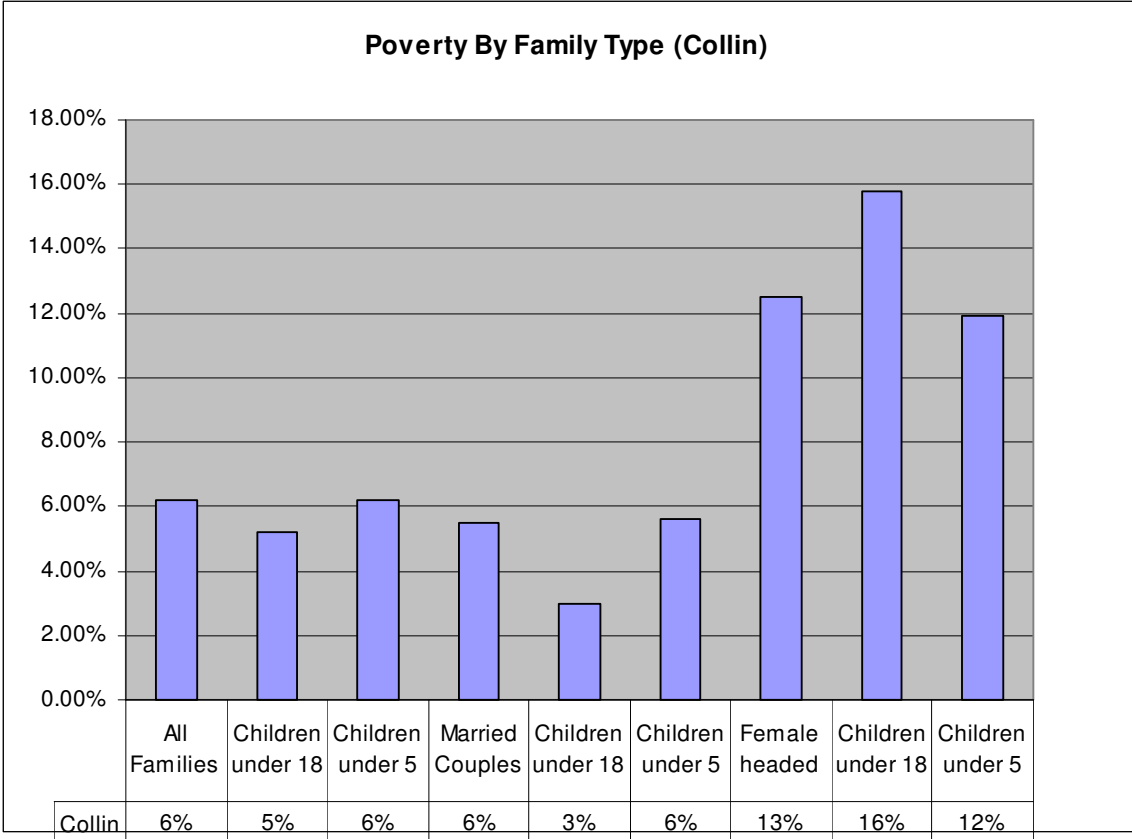


Source: US Census American Factfinder Survey

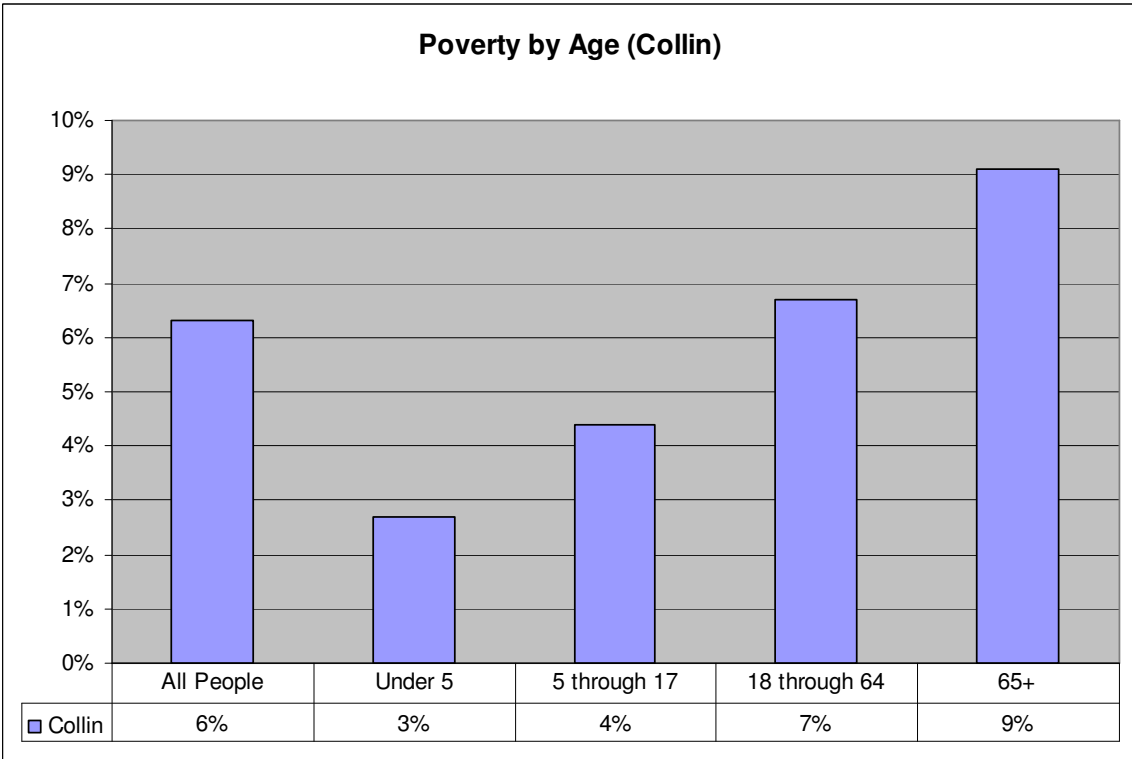
Poverty by Age Group



Source: US Census American Factfinder Survey

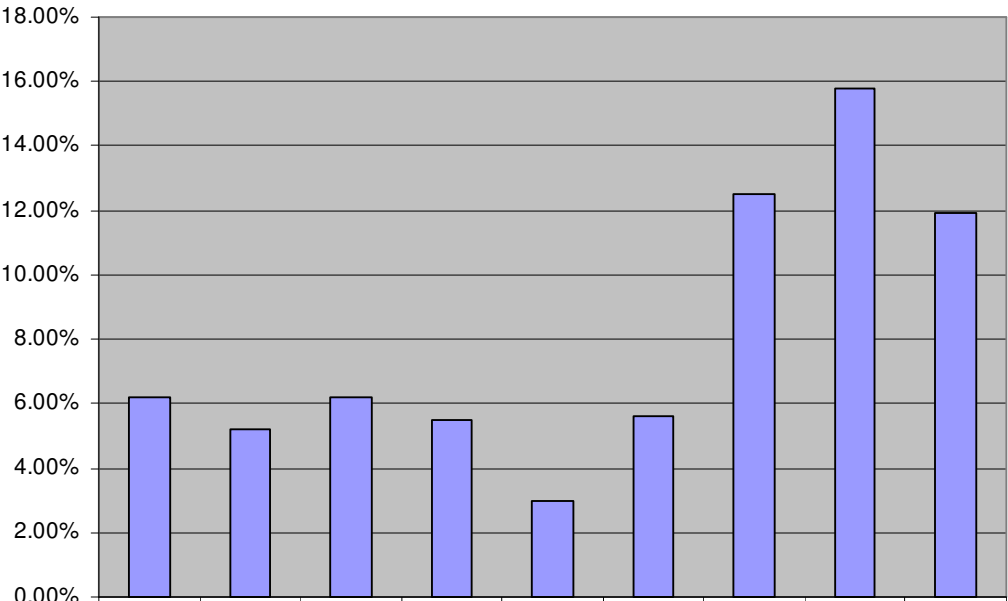


Source: US Census American Factfinder Survey



Source: US Census American Factfinder Survey

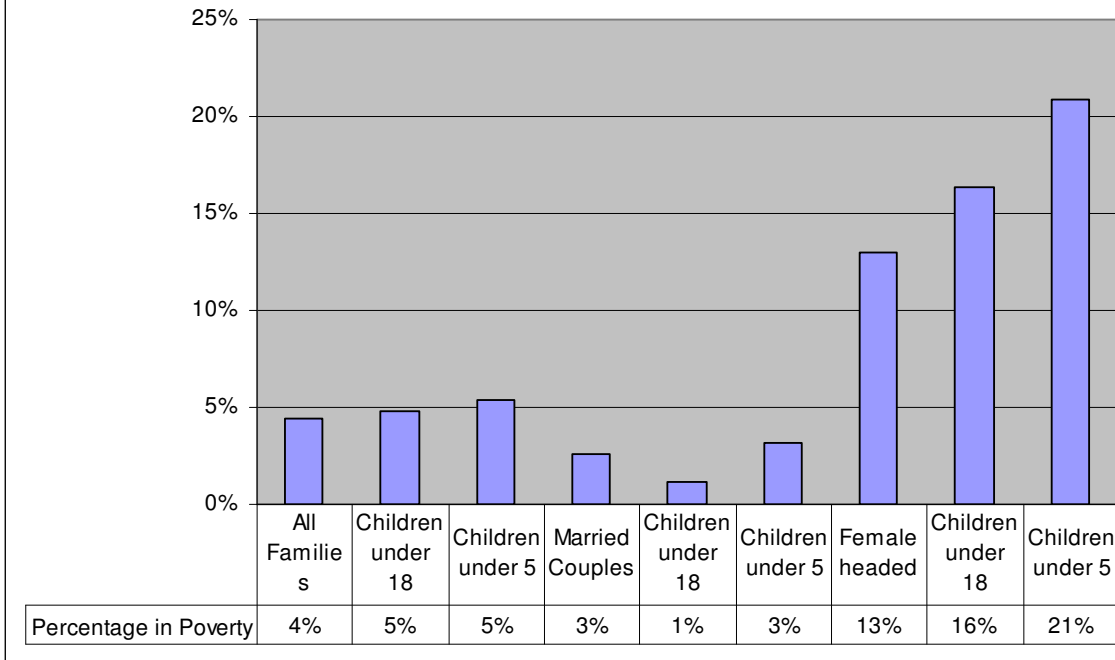
Poverty By Family Type (Collin)



	All Families	Children under 18	Children under 5	Married Couples	Children under 18	Children under 5	Female headed	Children under 18	Children under 5
Collin	6%	5%	6%	6%	3%	6%	13%	16%	12%

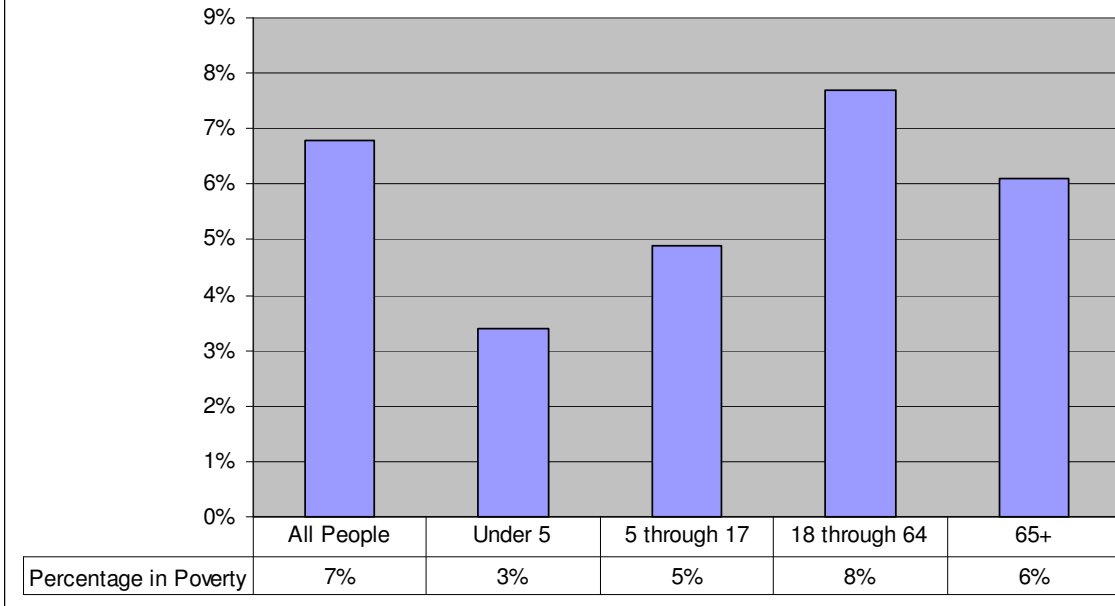
Source: US Census American Factfinder Survey

Poverty by Family Type (Denton)



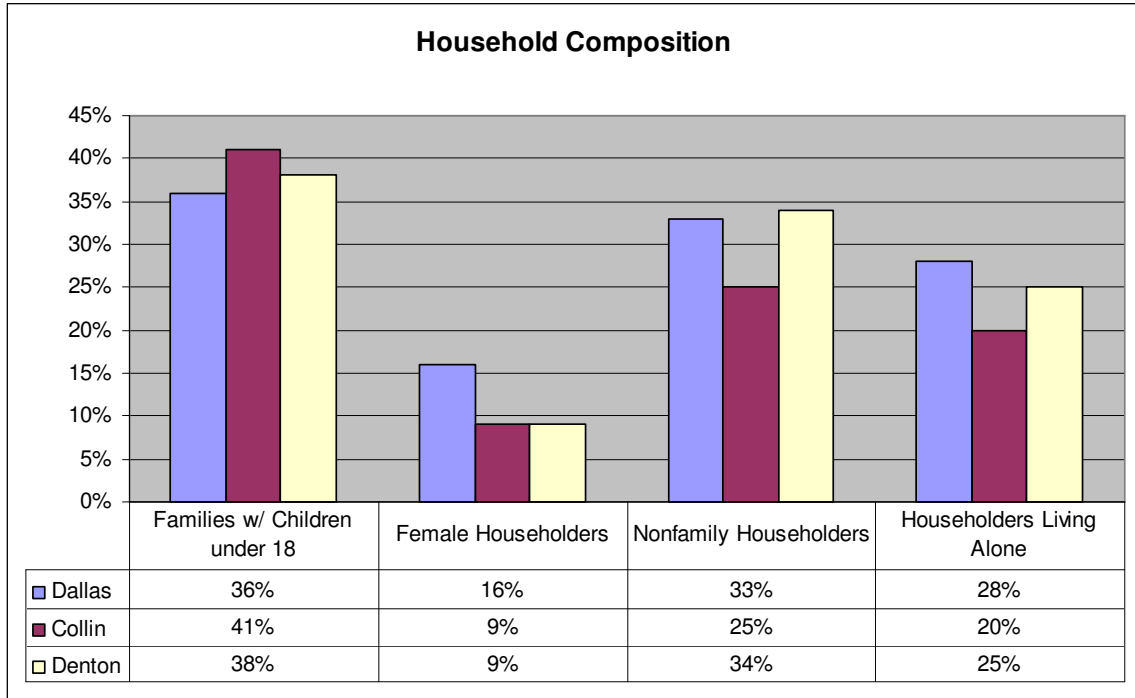
Source: US Census American Factfinder Survey

Poverty by Age (Denton)

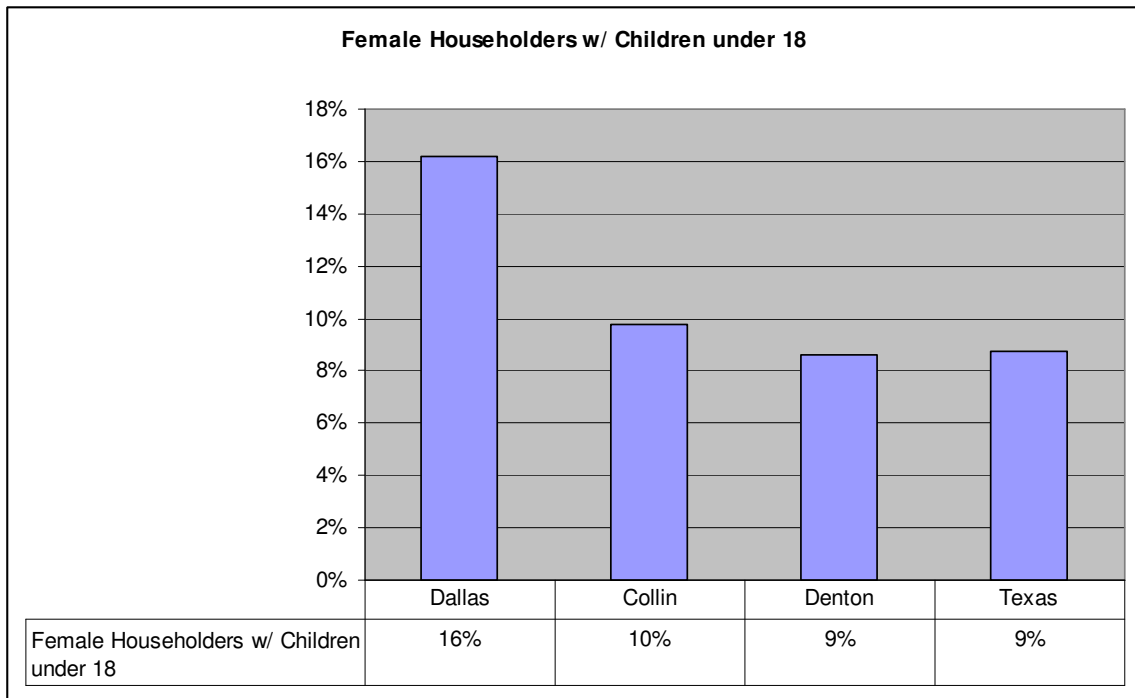


Source: US Census American Factfinder Survey

Household Composition



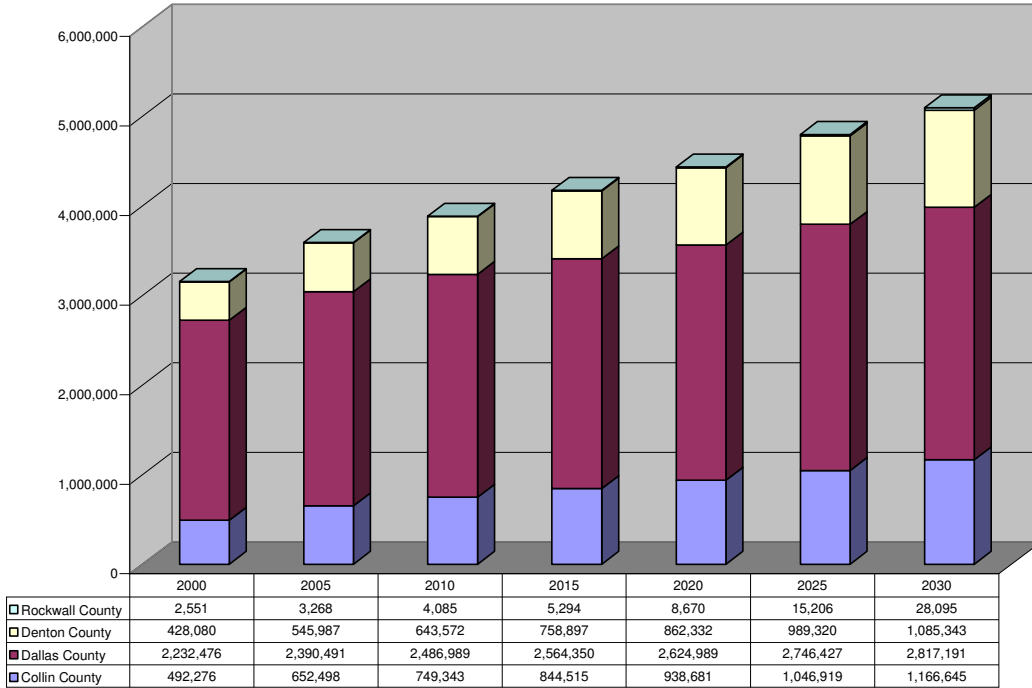
Source: US Census American Factfinder Survey



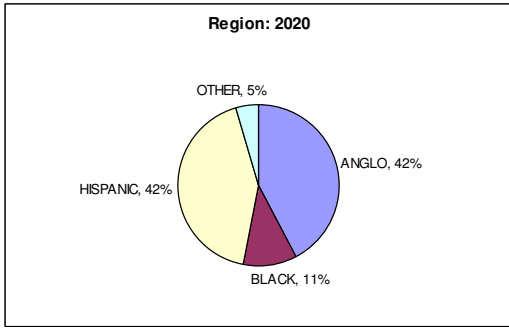
Source: US Census American Factfinder Survey

Changing Demographics

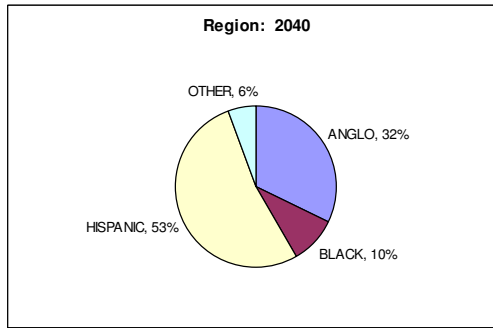
North Texas Population Projection 2000-2030



Source: US Census American Factfinder Survey

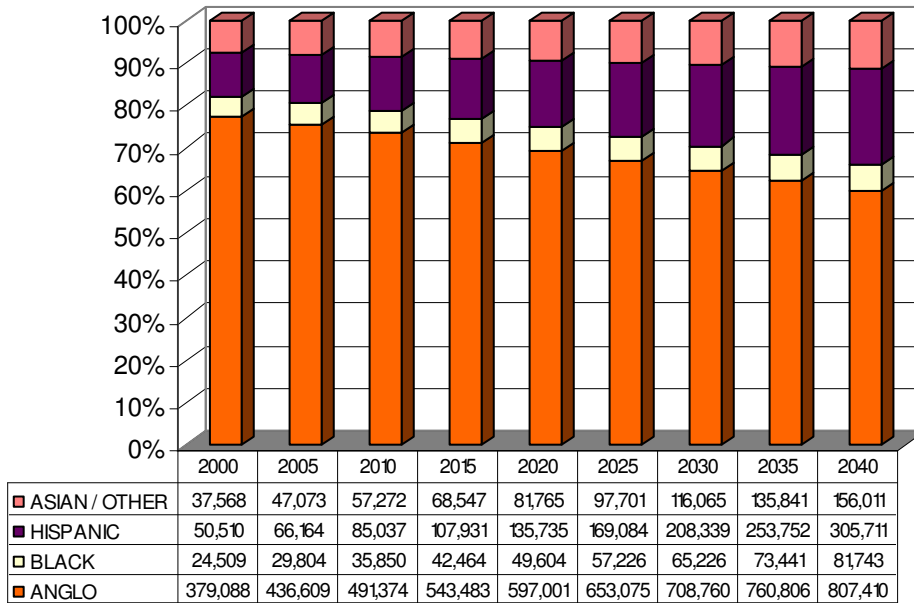


Source: US Census American Factfinder Survey



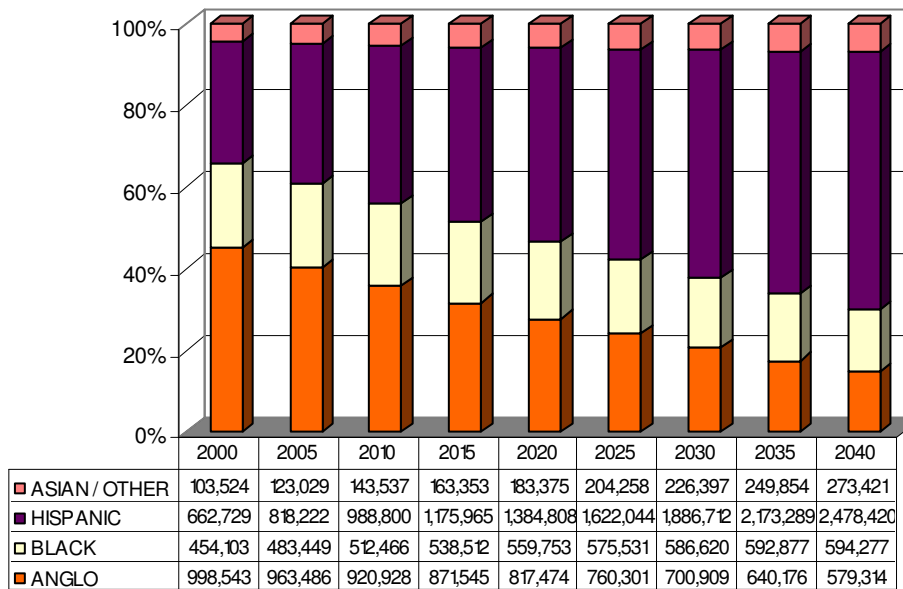
Source: US Census American Factfinder Survey

Collin County Changing Demographics



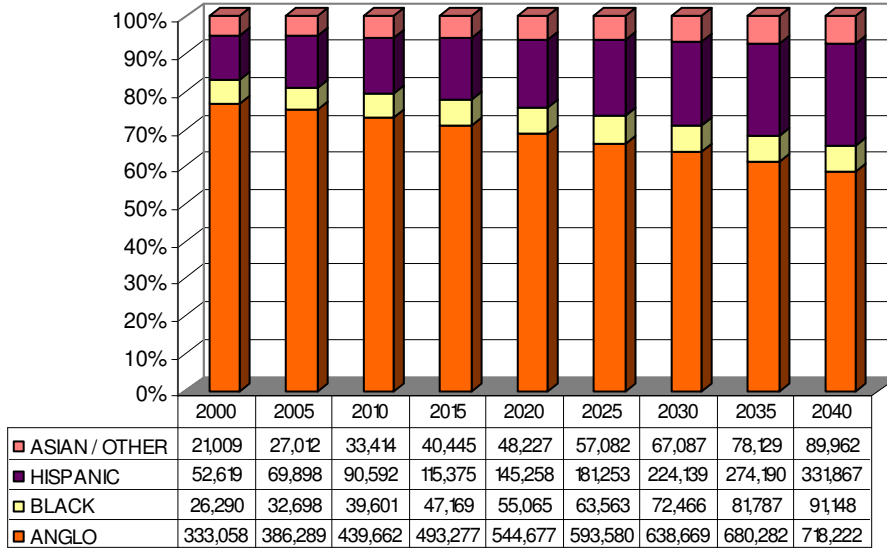
Source: US Census American Factfinder Survey

Dallas County Changing Demographics



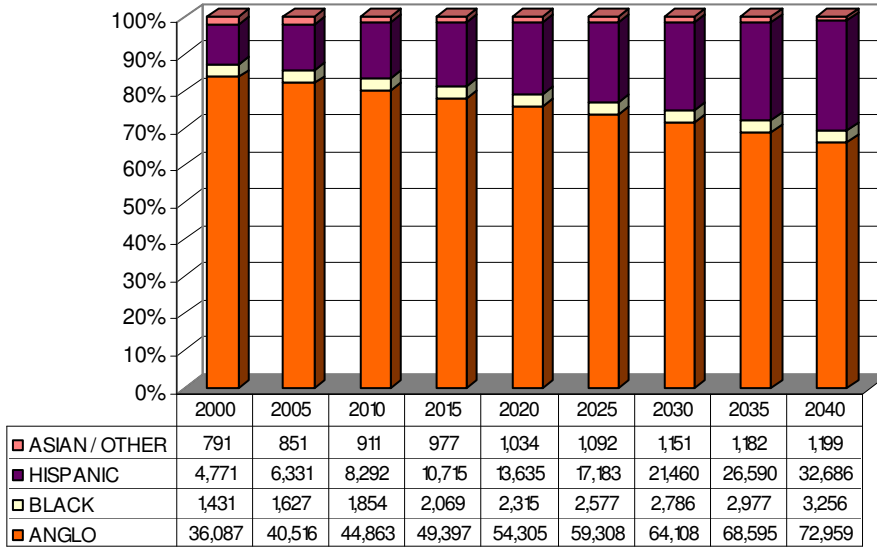
Source: US Census American Factfinder Survey

Denton County Changing Demographics



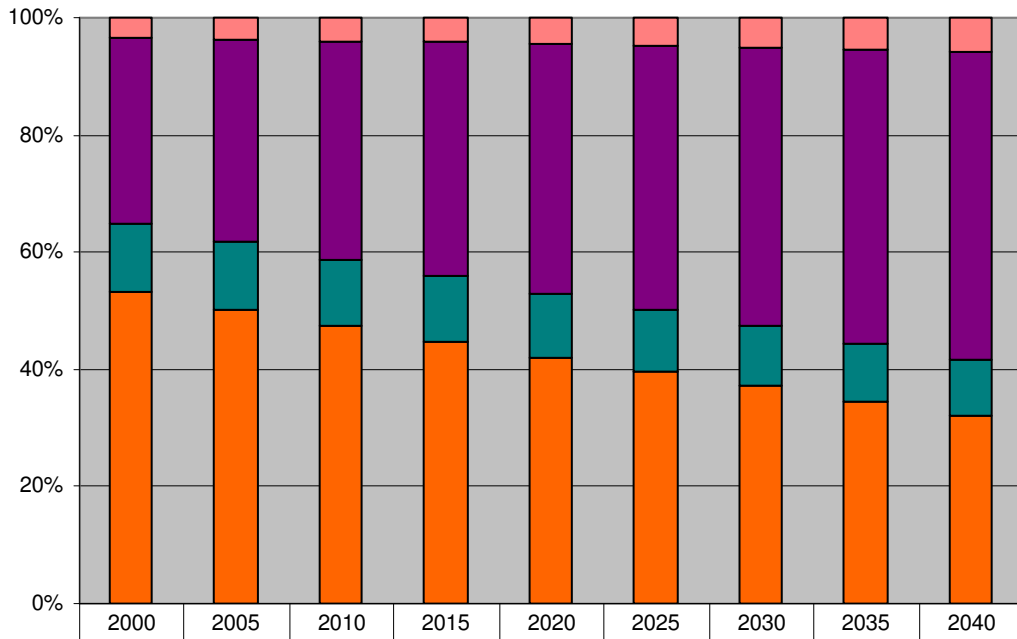
Source: US Census American Factfinder Survey

Rockwall County Changing Demographics



Source: US Census American Factfinder Survey

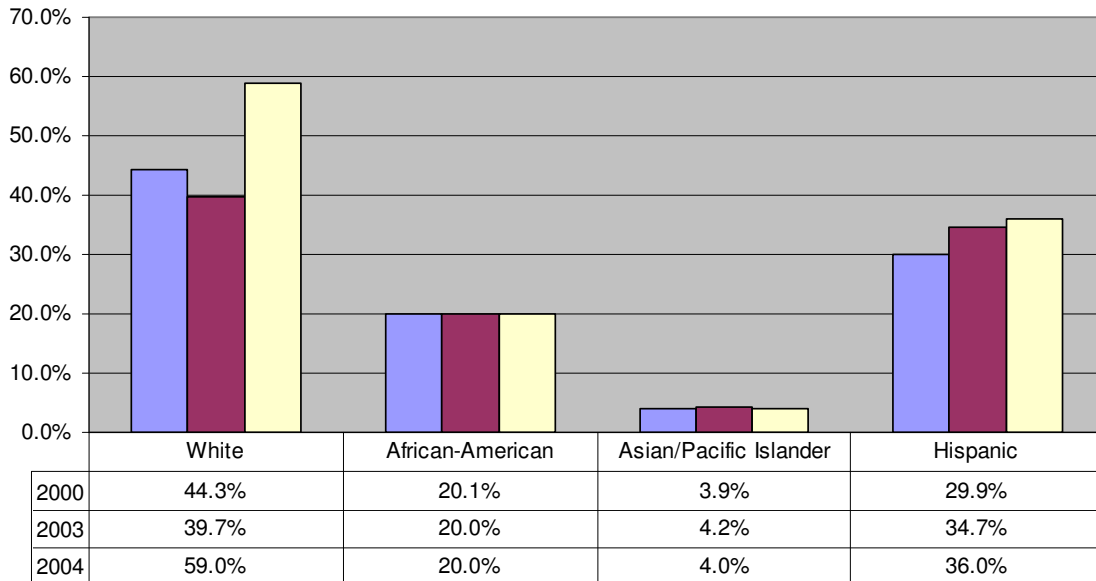
Texas Changing Demographics



	2000	2005	2010	2015	2020	2025	2030	2035	2040
OTHER	685,785	818,706	961,460	1,112,612	1,273,908	1,447,400	1,632,588	1,827,513	2,028,603
HISPANIC	6,669,666	7,820,842	9,080,466	10,436,55	11,882,99	13,448,47	15,140,08	16,934,44	18,804,29
BLACK	2,421,653	2,588,603	2,754,737	2,913,059	3,052,412	3,170,981	3,268,611	3,345,693	3,403,176
ANGLO	11,074,71	11,327,87	11,533,98	11,694,53	11,796,47	11,830,58	11,789,29	11,682,02	11,525,08

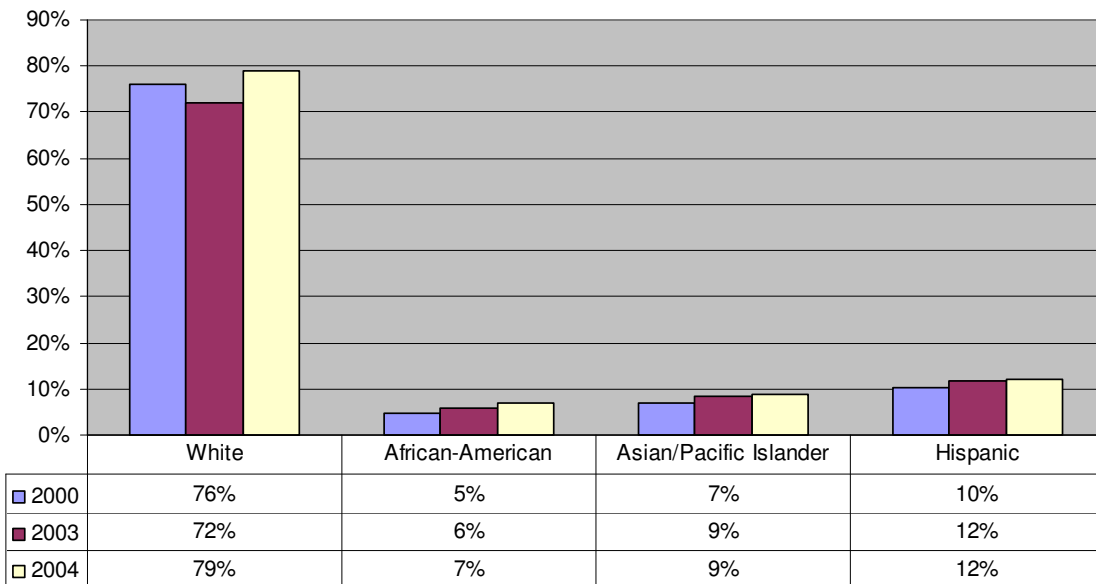
Source: US Census American Factfinder Survey

Dallas County: Population by Race



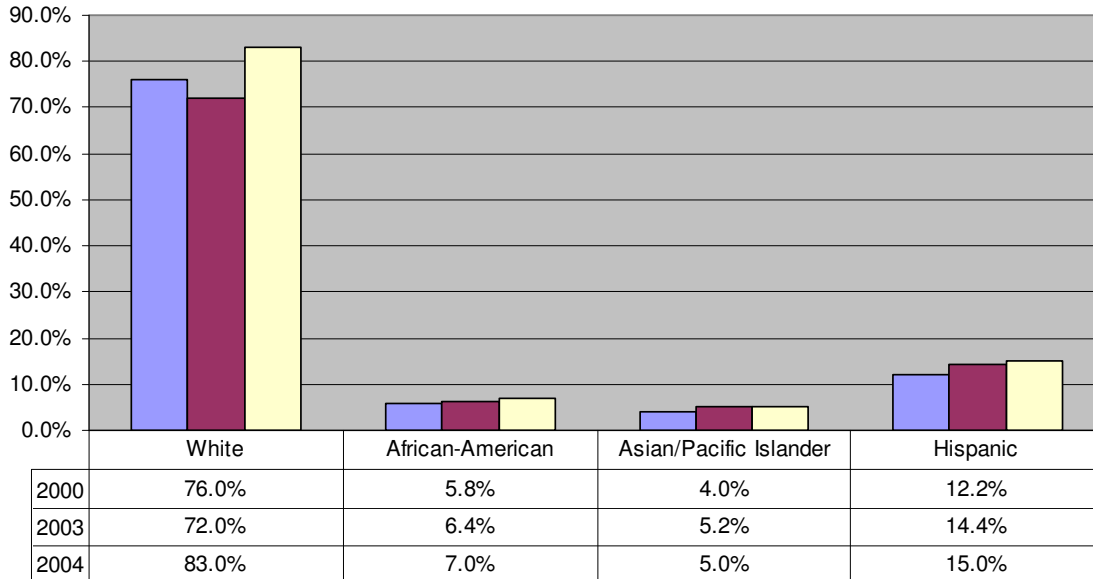
Source: US Census American Factfinder Survey

Collin County: Population by Race



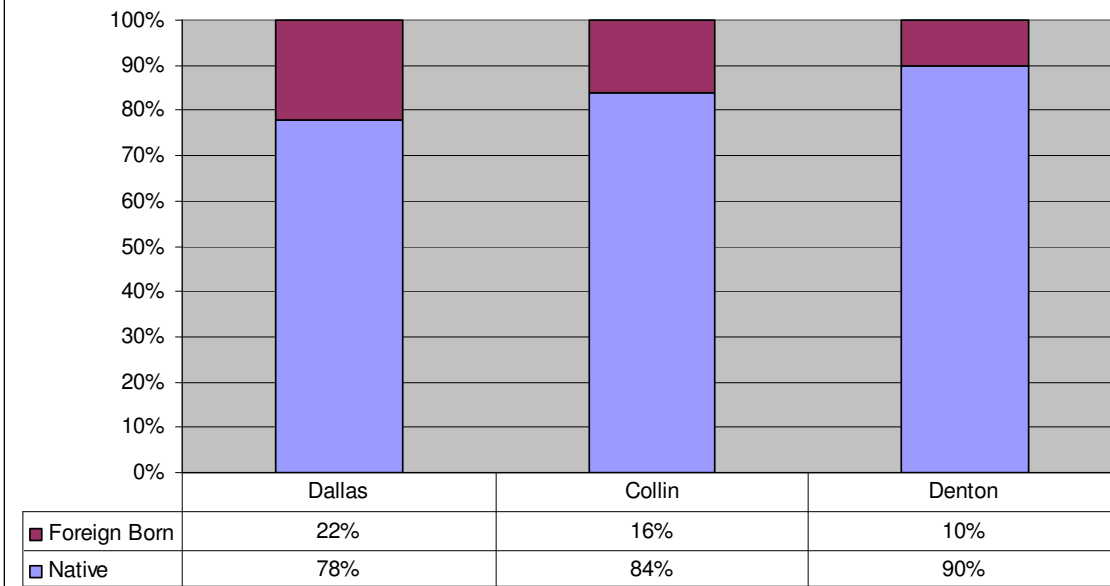
Source: US Census American Factfinder Survey

Denton County: Population by Race



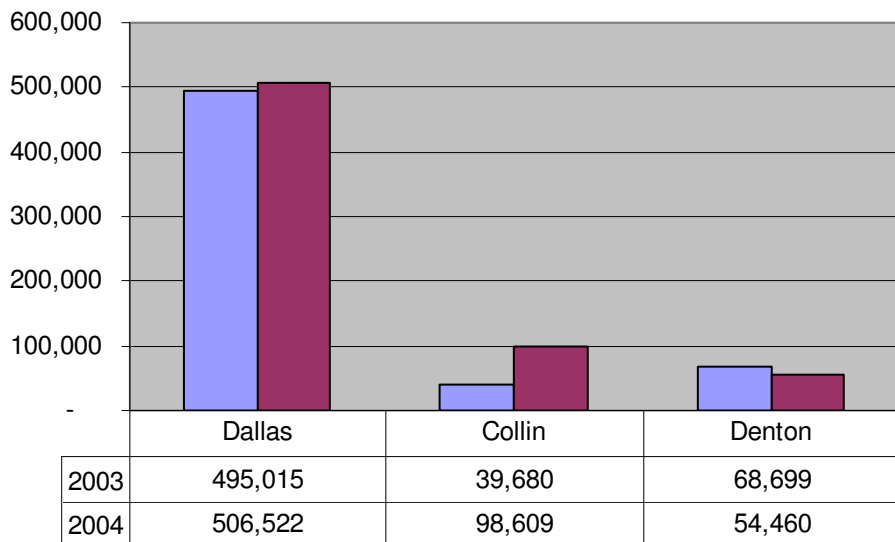
Source: US Census American Factfinder Survey

Population by Place of Birth



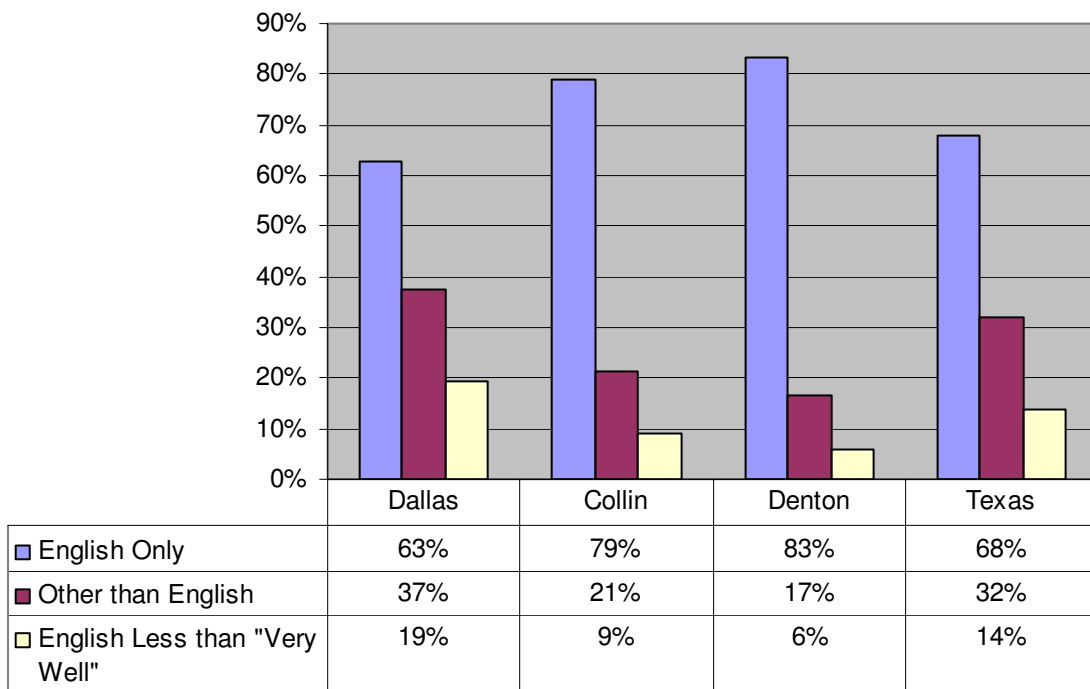
Source: US Census American Factfinder Survey

Population of Foreign Born by County



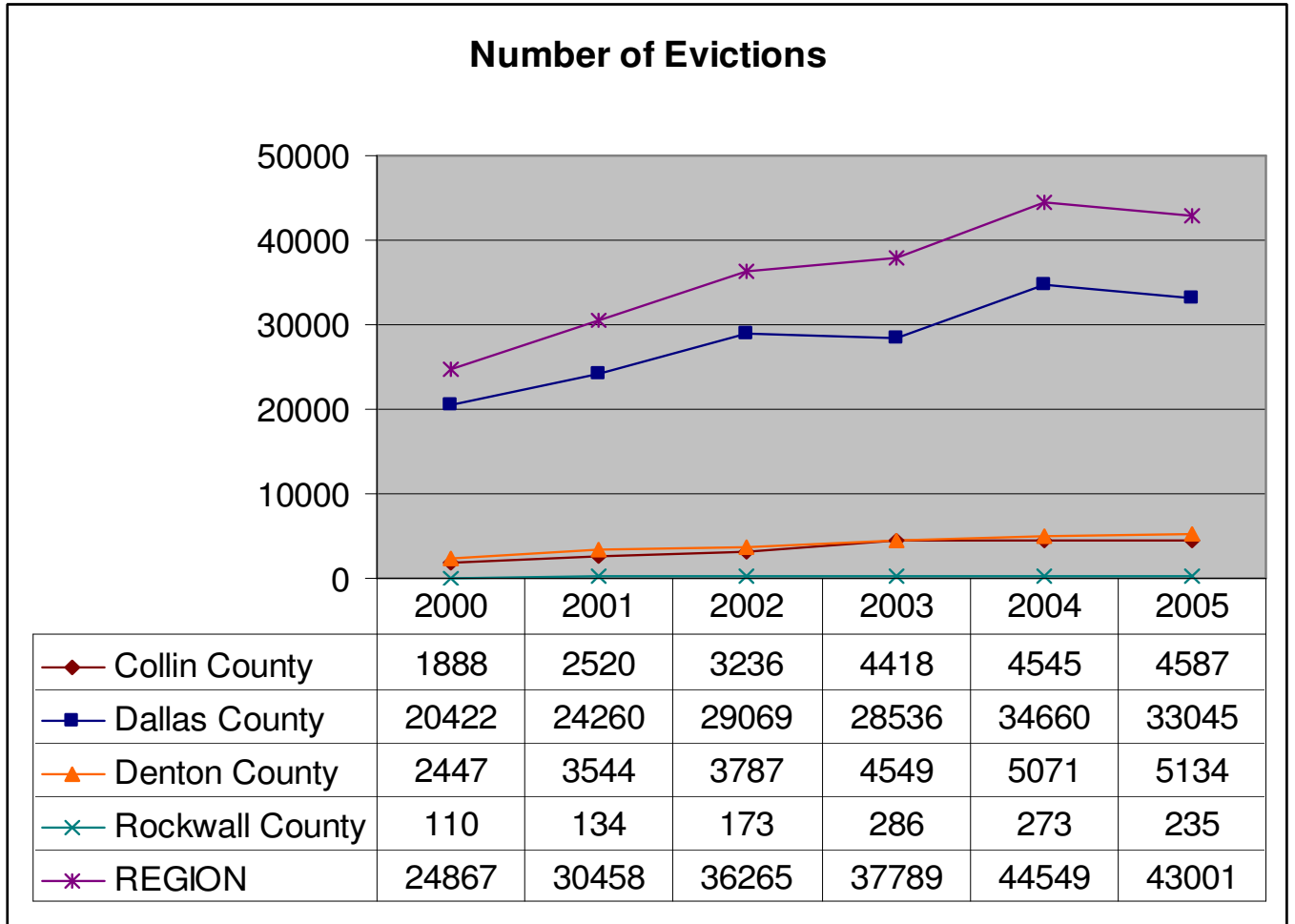
Source: US Census American Factfinder Survey

Language Spoken in the Home



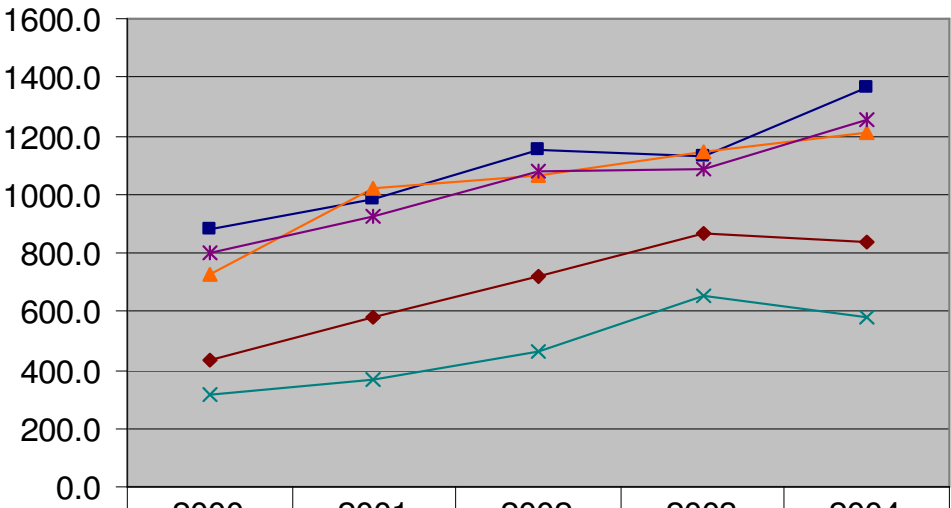
Source: US Census American Factfinder Survey

Evictions



Source: The Texas Office Court of Administration – Activity Report for Justice of the Peace Courts

Rate of Evictions (per 100,000)



	2000	2001	2002	2003	2004
◆ Collin County	434.1	576.9	720.6	862.9	836.5
■ Dallas County	882.8	985.1	1155.7	1130.6	1368.7
▲ Denton County	727.7	1017.0	1062.7	1144.1	1213.9
× Rockwall County	312.8	364.9	461.2	655.2	576.9
* Region	797.1	927.3	1079.9	1086.7	1258.2

Source: The Texas Office Court of Administration – Activity Report for Justice of the Peace Courts