

## **United Way of Metropolitan Dallas**

*serving Dallas, Collin, Rockwall Counties  
and Greater Lewisville*



what matters.™

# 2006 Community Needs Assessment Building Successful Youth and Families

***Family Safety***

## Family Safety – North Texas Overview

The information in suggests that families were safer in 2005 than in previous years. The rate of crimes against property, violent crimes, and reported rapes has decreased in all four counties during the past year. Family violence, child abuse, number of intakes alleging child abuse, drug arrests and DWI arrests have been mixed across the four county region.

Two suburban counties, Collin County and Denton County, have had very similar trends in the past few years. While violent crime and family violence rates decreased, the number of intakes alleging child abuse and drug arrest rates increased in both counties.

Rockwall County and Dallas County had the most improvement of conditions in the four county region, even though the two counties are vastly different in size and environment (urban vs. suburban/rural).


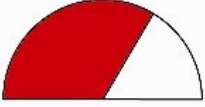
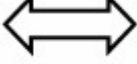
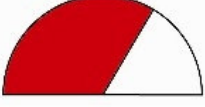
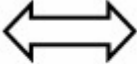
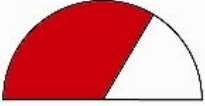


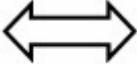
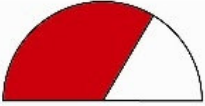
### Trends

**To place the following data in context, the population change has been included for the UWMD 4 county service area.**

The population in the UWMD 4 county service area has increased 10% from 2000-2004.

- The rate of reported rapes in the four county region has fluctuated from 1999-2004 with a decrease starting from 2002-2004. The overall rate has decreased 19% from 1999-2004.
- Across the region, the number of initial intakes alleging abuse/neglect has gradually increased from 1997 to 2005 with an overall increase of 76% during this time period.
- Across the four county region, the rate of drug offense arrests decreased from 2000-2002, but started to increase in 2003-2004. However, the overall rate has reduced 15% from 2000-2004.

## Family Safety: Indicators and Trends

INDICATOR	SUMMARY	TREND	CONDITION
<p><b>Crime</b></p>	<p>The rate of total violent crimes from 1999-2004 has decreased in all 4 UWMD service areas. The rate of hate crimes varies greatly from region to region. The suburban counties (Collin and Denton County) have seen a decrease in the rate of hate crimes, whereas Dallas and Rockwall County have seen an increase.</p>	<p> <b>Same or Mixed</b></p>	<p> Concerned</p>
<p><b>Rape</b></p>	<p>The rate of reported rapes from 1999-2004 has decreased in all counties but Collin County.</p>	<p> <b>Same or Mixed</b></p>	<p> Concerned</p>
<p><b>Family Violence</b></p>	<p>The rate of family violence fluctuated between 1999 and 2004 and is lower in all counties but Rockwall County. Family violence is more than twice as prevalent in Dallas County than in the suburban counties (Collin County and Denton County).</p>	<p> <b>Same or Mixed</b></p>	<p> Concerned</p>
<p><b>Child Abuse &amp; Neglect</b></p>	<p>Rate of confirmed child abuse cases rose from 1997 to 2005 in Collin, Dallas, and Denton but not in Rockwall. The percentage of subsequently confirmed child abuse victims has increased in all 4 counties.</p>	<p> <b>Worsening</b></p>	<p> Critical</p>
<p><b>Substance Abuse Arrests</b></p>	<p>The rate of all drug offense arrests increased from 2000 to 2004 in all counties but Dallas County. Rockwall County has the highest rate of all drug offense arrests in the North Texas Region in each year. The rate of DWI arrests varies from county to county. From 2000-2004, the rate of DWI arrests increased in Dallas and Collin County and decreased in Denton and Rockwall County.</p>	<p> <b>Same or Mixed</b></p>	<p> Concerned</p>

## Family Safety: By County

### Collin County

The population in Collin County increased 37% from 1999-2004 and 27% from 2000-2004.

- The rate of total violent crimes in Collin County has fluctuated from 1999-2004 with a decrease starting in 2003-2004. The overall rate has decreased 32% from 1999-2004; however, the population in Collin County has correspondingly increased 37% from 1999-2004. Collin County and Denton County had virtually identical trend lines from 1999-2004.
- The rate of hate crimes in Collin County has fluctuated significantly from 1999-2004 with a decrease in from 2003-2004. The overall rate has decreased 31% from 1999-2004.
- The rate of family violence in Collin County has fluctuated from year to year with a slight decrease from 2003-2004. The overall rate dropped 12% from 1999-2004. Collin County and Denton County had virtually identical trend lines from 1999-2004.
- Collin and Denton County have virtually identical trend lines for the number of initial intakes alleging abuse/neglect. Both counties have had a consistent, gradual increase from 1997-2005. Collin County had a 189% increase from 1997-2005.
- The rate of drug offense arrests in Collin County decreased significantly from 2000-2002, with a sharp increase starting in 2003-2004. Overall, the rate has increased 51% from 2000-2004.
- The rate of DWI arrests in Collin County has steadily increased from 2000-2004 with an overall rate increase of 75% over that time period.

### Dallas County

The population in Dallas County increased 11% from 1999-2004 and 3% from 2000-2004.

- The rate of reported rapes in Dallas County decreased steadily from 1999 to 2004 with an overall rate decrease of 22% from 1999-2004.
- Dallas County has had a steady decrease in the rate of family violence with a 25% decrease from 1999-2004.
- In Dallas, the number of initial intakes alleging abuse/neglect has fluctuated from 1997-2005, with an increase from 2003-2005. The overall number increased 56% from 1997-2005.
- The rate of drug offense arrests in Dallas County has fluctuated over the years, generally decreasing from 2000-2004 with a slight increase in 2003. Overall, the rate has decreased 23% from 2000-2004. Dallas County was the only county in the four county region that had a decrease in the rate of drug offense arrests.

## Denton County

The population in Denton County increased 31% from 1999-2004 and 22% from 2000-2004.

- The rate of total violent crimes in Denton County has fluctuated from 1999-2004 with a decrease from 2003-2004. The overall rate decreased 24% from 1999-2004. Collin County and Denton County had virtually identical trend lines from 1999-2004.
- The rate of family violence in Denton County has fluctuated from year to year with a slight increase from 2003-2004. The overall rate dropped 14% from 1999-2004. Collin County and Denton County had virtually identical trend lines from 1999-2004.
- The rate of confirmed cases of child abuse in Denton County has fluctuated significantly over the years with an increase from 2003-2005. The overall rate increased 154% from 1997-2005.
- Collin and Denton County have virtually identical trend lines for number of initial intakes alleging abuse/neglect. Both counties have had a consistent, gradual increase from 1997-2005. Denton County had a 138% increase from 1997-2005.

## Rockwall County

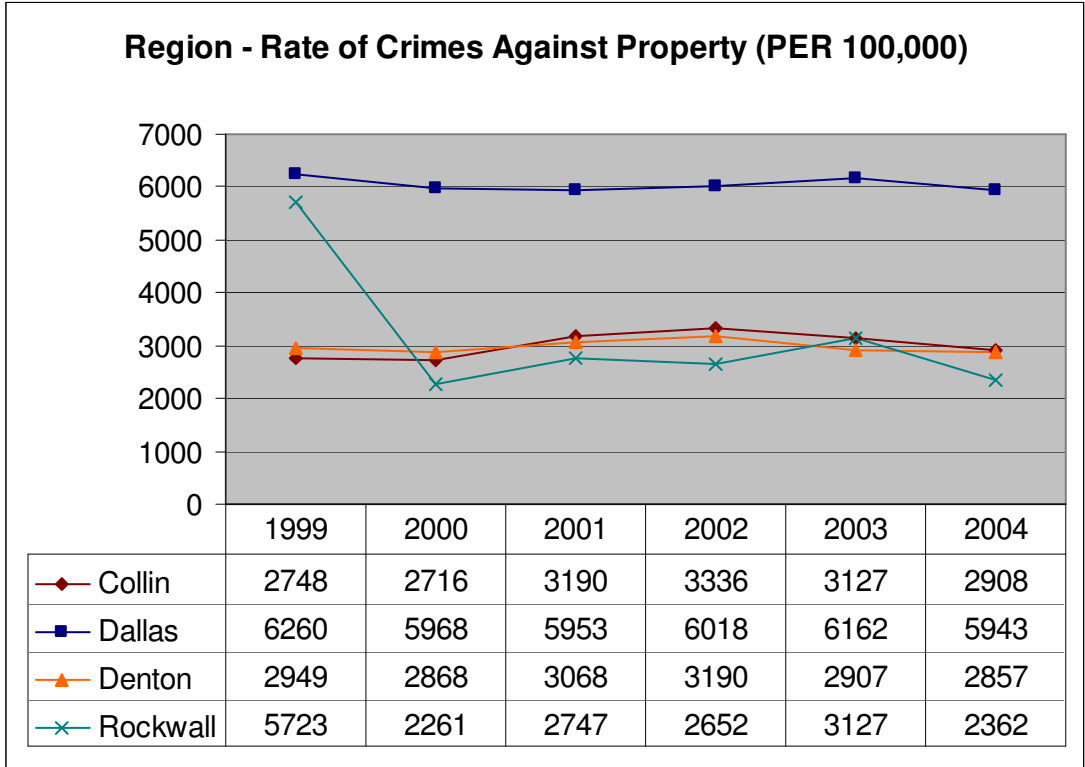
The population in Rockwall County increased 40% from 1999-2004 and 35% from 2000-2004.

With such a small base, the rates and percentages for Rockwall County can have more dramatic fluctuations than with a larger base.

- Rockwall County had a 60% drop in the rate of crimes against property from 1999-2000. Thereafter, the rate fluctuated with a decrease from 2003-2004. Overall, the rate decreased 59% from 1999-2004.
- The rate of reported rapes in Rockwall County has fluctuated significantly from 1999-2004 with a decrease from 2003-2004. The rate has decreased 53% from 1999-2004.
- The rate of family violence in Rockwall County had an upward trend starting in 2000 with a sharp 35% increase in 2001. This rate dropped 19% from 2001-2002, but started to increase again from 2003-2004. The overall rate increased 25% from 1999-2004.
- The rate of confirmed cases of child abuse in Rockwall County has fluctuated significantly over the years with a sharp increase in 1999 and gradual decrease from 2000-2005. The overall rate decreased 51% from 1997-2005. Rockwall County is the only county in the four county region that had a decrease in the rate of confirmed cases of child abuse.
- The number of initial intakes alleging abuse/neglect in Rockwall County increased from 1997-2000 with a slight decrease in 2001. The increasing trend began again from 2002-2005 with 103% increase from 1997-2005.
- Although the number of DWI arrests in Rockwall County was lowest in the four county region, the rate of DWI arrests in Rockwall County was 95% to 147% higher than that of Dallas County in each year from 2000-2003. While the rate of DWI arrests has fluctuated from 2000-2004, the rate decreased by almost 43% from 2000-2004. The other 3 counties in the four county region saw more subtle fluctuations from year to year.

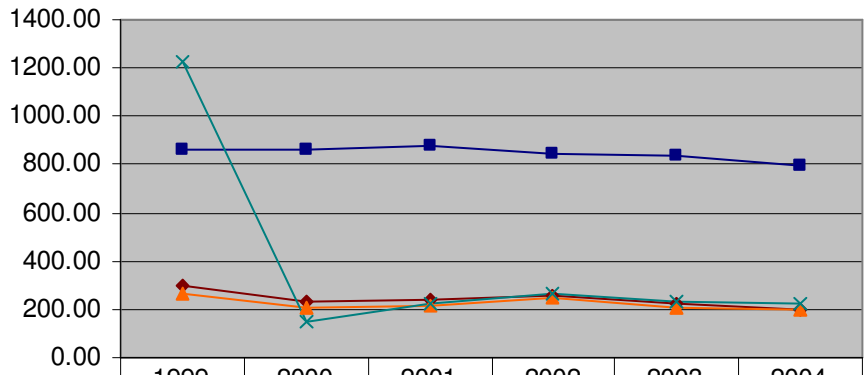
# Family Safety: Supporting Data

## Crime



Source: Texas Department of Public Safety

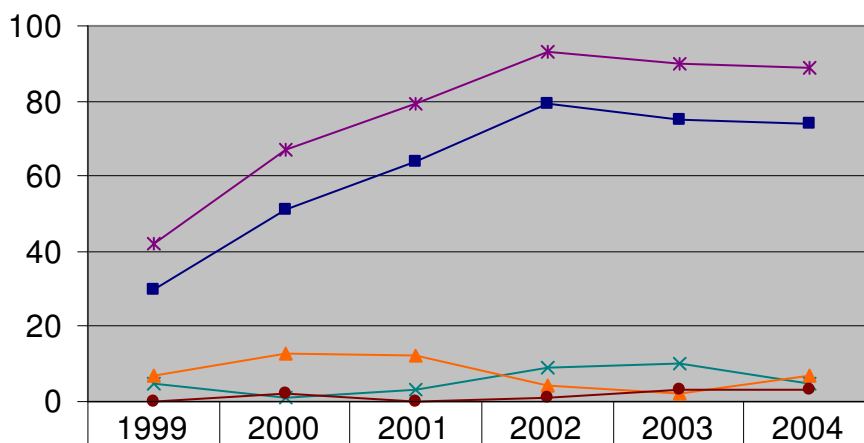
### Rate of Total Violent Crimes by County (Per 100,000)



	1999	2000	2001	2002	2003	2004
◆ Collin	295.63	231.77	241.29	258.53	219.53	200.43
■ Dallas	865.31	860.64	879.84	846.55	835.46	798.50
▲ Denton	261.52	206.97	212.64	249.47	203.22	199.41
× Rockwall	1,223.03	147.86	220.55	261.25	229.10	223.98

Source: Texas Department of Public Safety

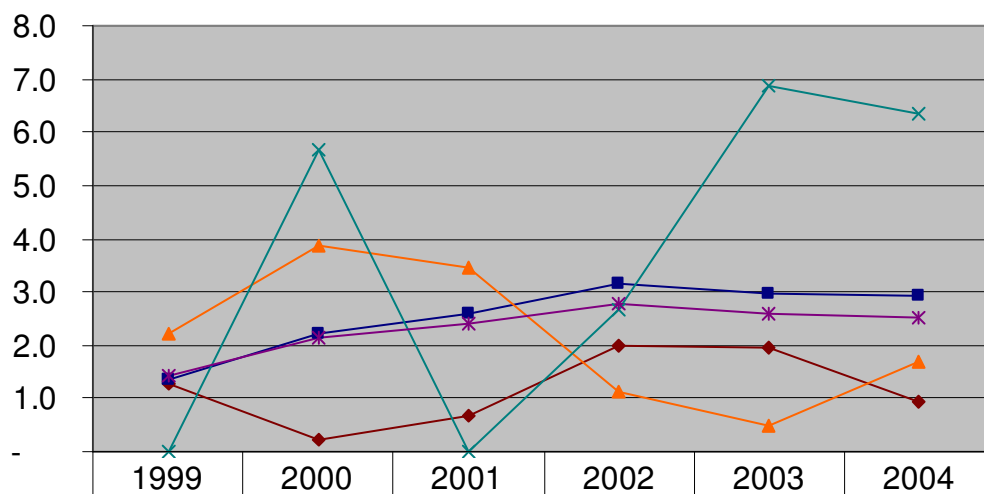
## Number of Hate Crimes



	1999	2000	2001	2002	2003	2004
—x— Collin County	5	1	3	9	10	5
—■— Dallas County	30	51	64	79	75	74
—▲— Denton County	7	13	12	4	2	7
—●— Rockwall County	0	2	0	1	3	3
—*— Region	42	67	79	93	90	89

Source: Texas Department of Public Safety

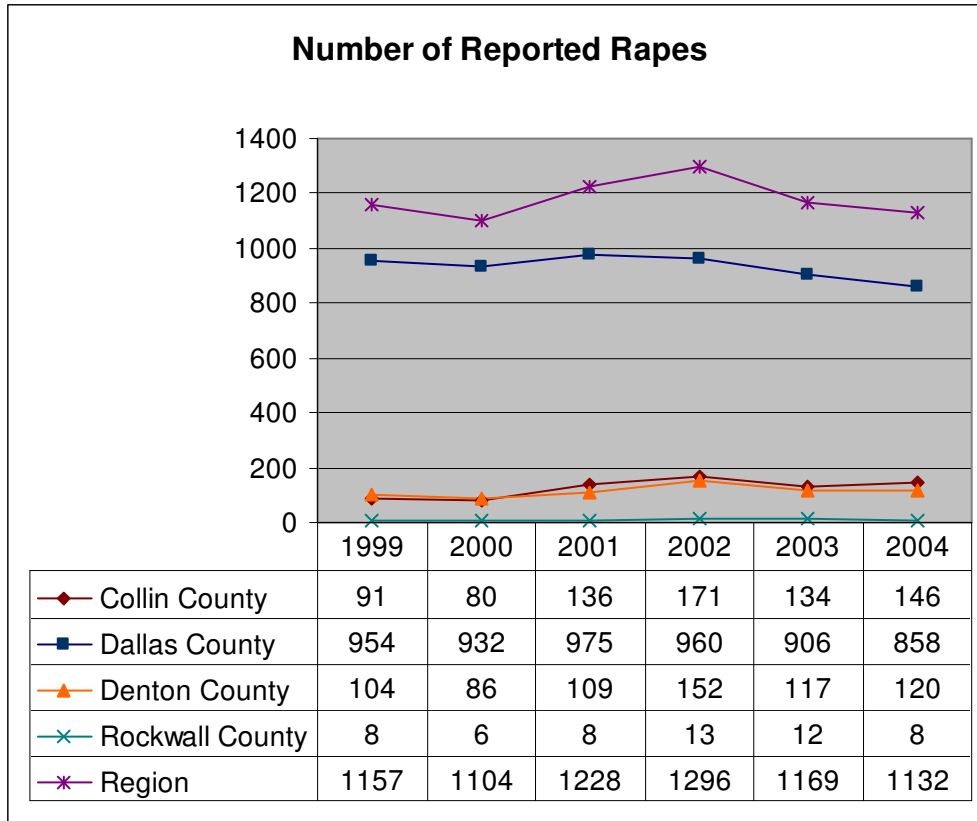
## Rate of Hate Crimes (per 100,000)



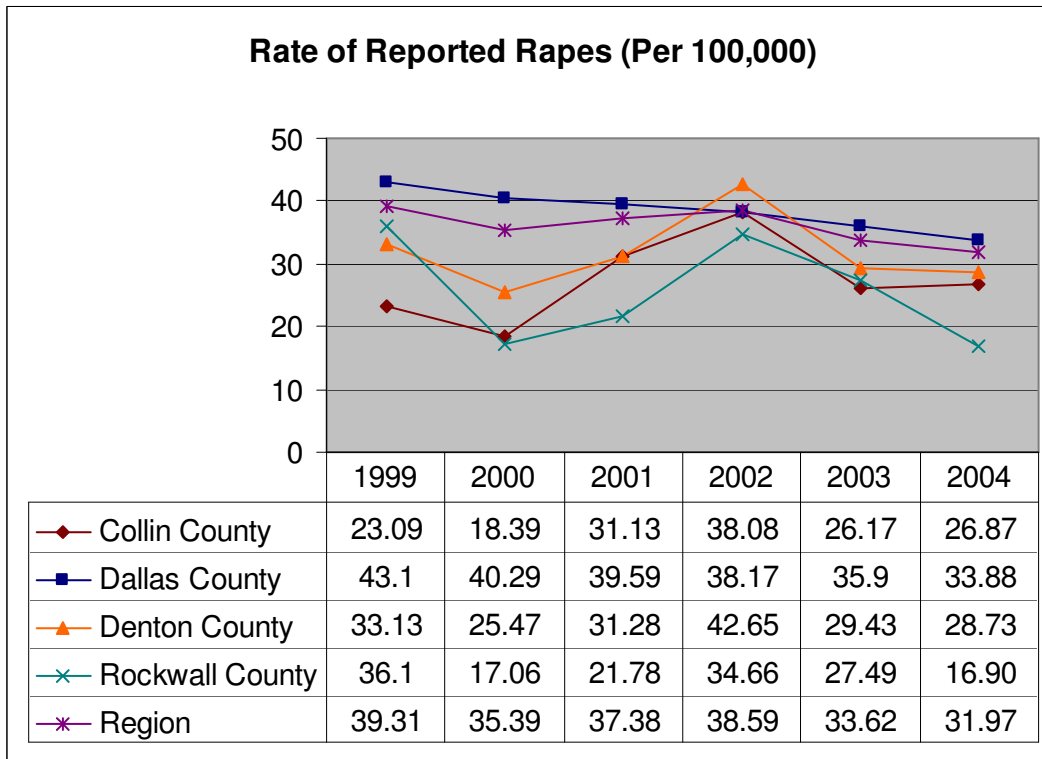
	1999	2000	2001	2002	2003	2004
—◆— Collin County	1.3	0.2	0.7	2.0	2.0	0.9
—■— Dallas County	1.4	2.2	2.6	3.1	3.0	2.9
—▲— Denton County	2.2	3.9	3.4	1.1	0.5	1.7
—×— Rockwall County	0	5.7	0	2.7	6.9	6.3
—*— Region	1.4	2.1	2.4	2.8	2.6	2.5

Source: Texas Department of Public Safety

## Rape

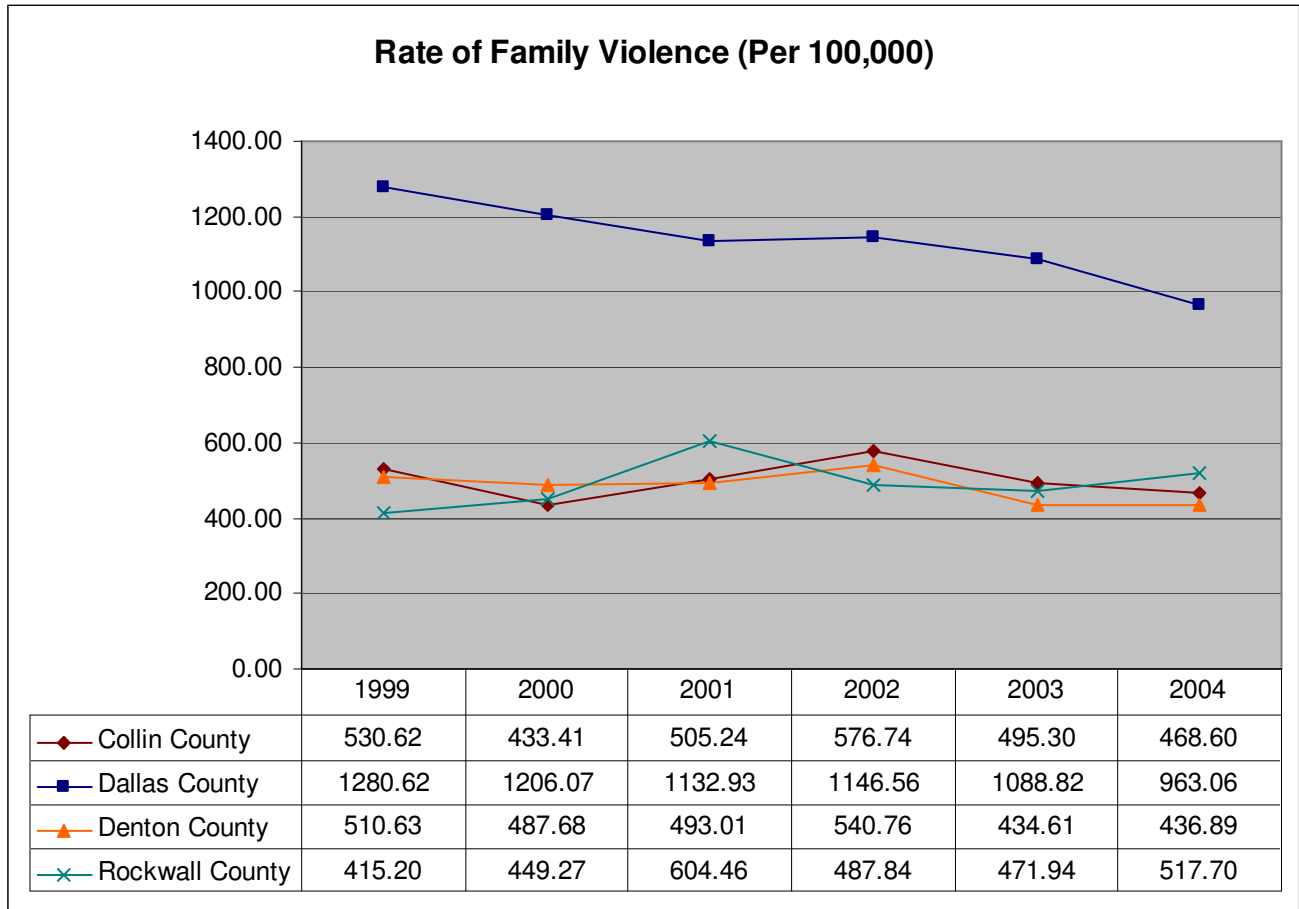


Source: Texas Department of Public Safety



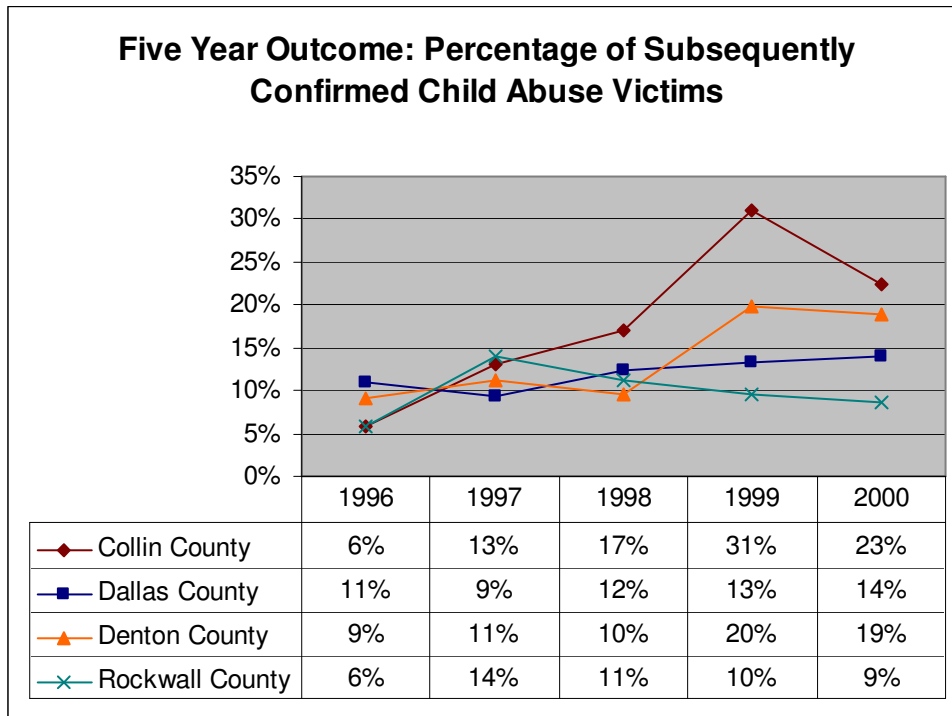
Source: Texas Department of Public Safety

## Family Violence



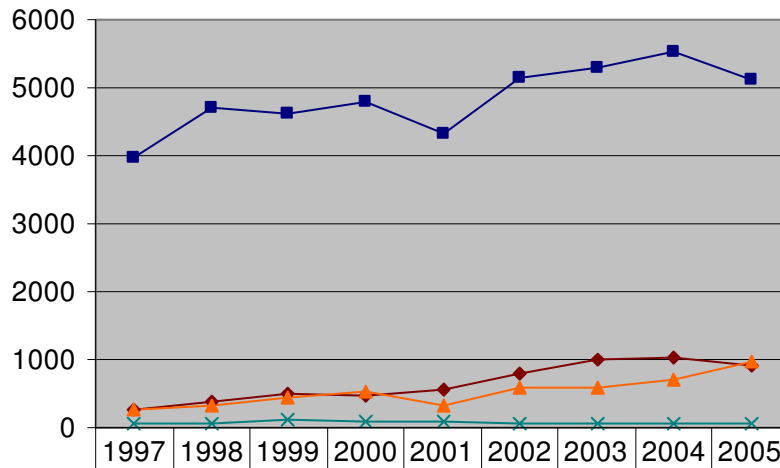
Source: Texas Department of Public Safety

## Child Abuse & Neglect



Source: Texas Department of Family and Protective Services

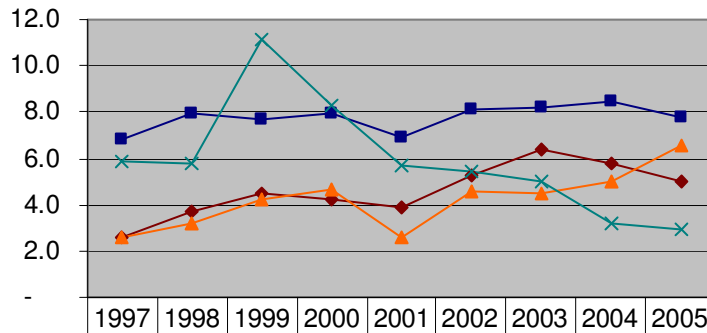
### Number of Confirmed Victims of Abuse/Neglect



◆ Collin County	276	394	497	483	561	798	989	1032	925
■ Dallas County	3969	4709	4611	4802	4337	5138	5292	5518	5116
▲ Denton County	273	329	450	516	321	574	576	700	963
× Rockwall County	60	60	131	90	75	72	68	50	48

Source: Texas Department of Family and Protective Services

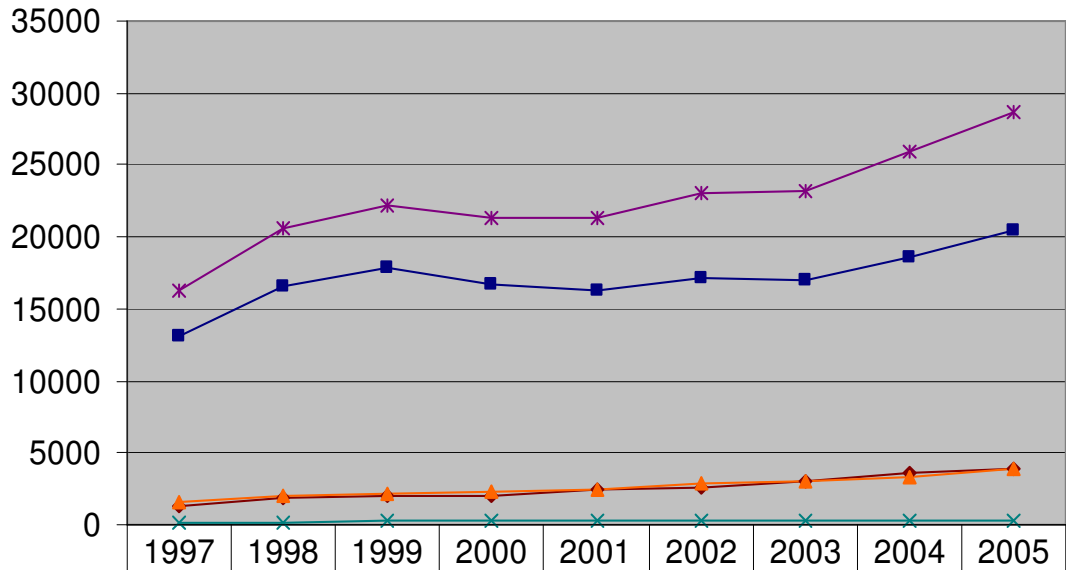
### Confirmed Cases of Child Abuse (Per 1,000 Children)



◆ Collin County	2.6	3.7	4.5	4.3	3.9	5.3	6.4	5.8	5.0
■ Dallas County	6.8	8.0	7.7	7.9	6.9	8.1	8.2	8.5	7.8
▲ Denton County	2.6	3.2	4.2	4.7	2.6	4.6	4.5	5.0	6.6
× Rockwall County	5.9	5.8	11.1	8.2	5.7	5.4	5.0	3.2	2.9

Source: Texas Department of Family and Protective Services

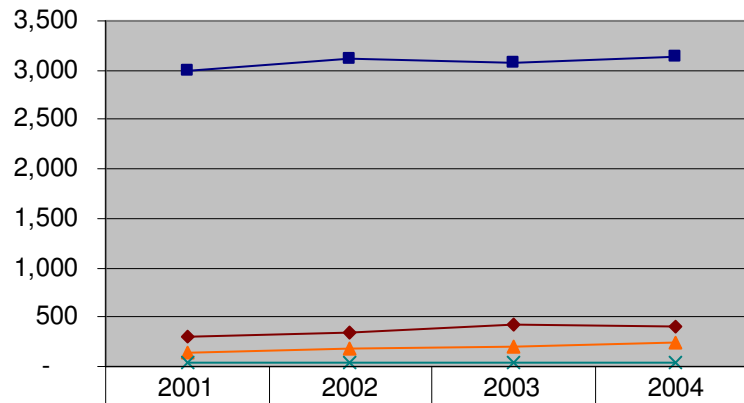
## Number of Initial Intakes Alleging Abuse/Neglect



◆ Collin County	1348	1815	1954	2051	2415	2630	2994	3647	3894
■ Dallas County	13091	16623	17867	16669	16210	17186	16927	18589	20479
▲ Denton County	1646	1951	2126	2281	2515	2889	3009	3297	3910
× Rockwall County	177	214	269	351	246	292	327	342	359
* Region	16262	20603	22216	21352	21386	22997	23257	25875	28642

Source: Texas Department of Family and Protective Services

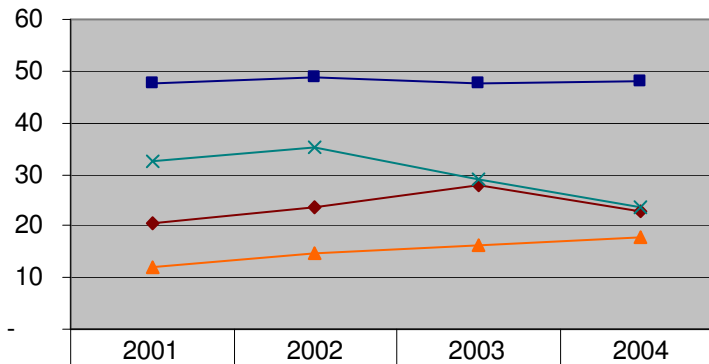
### Number of Children in Foster Care



	2001	2002	2003	2004
◆ Collin County	297	354	428	405
■ Dallas County	2,988	3,120	3,076	3,134
▲ Denton County	147	184	209	249
× Rockwall County	43	47	39	37

Source: Texas Department of Family and Protective Services

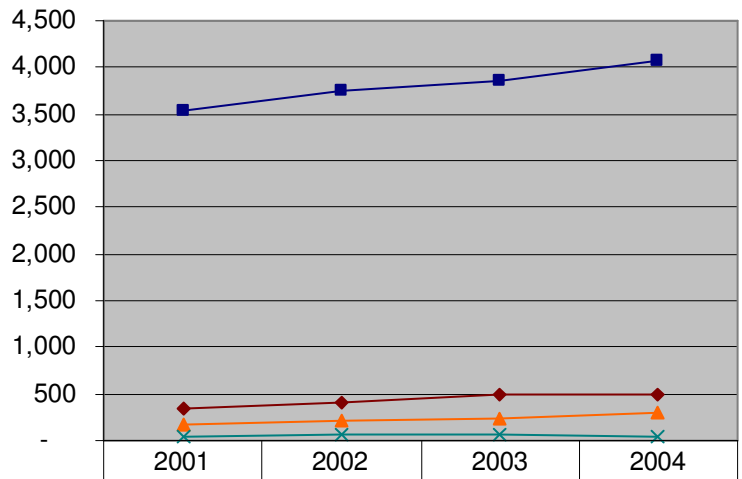
### Rate of Children in Foster Care (Per 10,000 Children)



	2001	2002	2003	2004
◆ Collin County	20	24	28	23
■ Dallas County	48	49	48	48
▲ Denton County	12	15	16	18
× Rockwall County	33	35	29	23

Source: Texas Department of Family and Protective Services

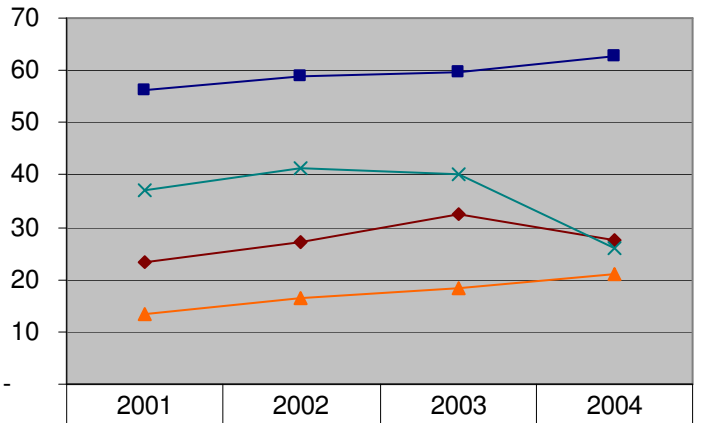
### Number of Children in Substitute Care



	2001	2002	2003	2004
—◆— Collin County	338	409	502	488
—■— Dallas County	3,527	3,760	3,856	4,078
—▲— Denton County	164	205	234	296
—×— Rockwall County	49	55	54	41

Source: Texas Department of Family and Protective Services

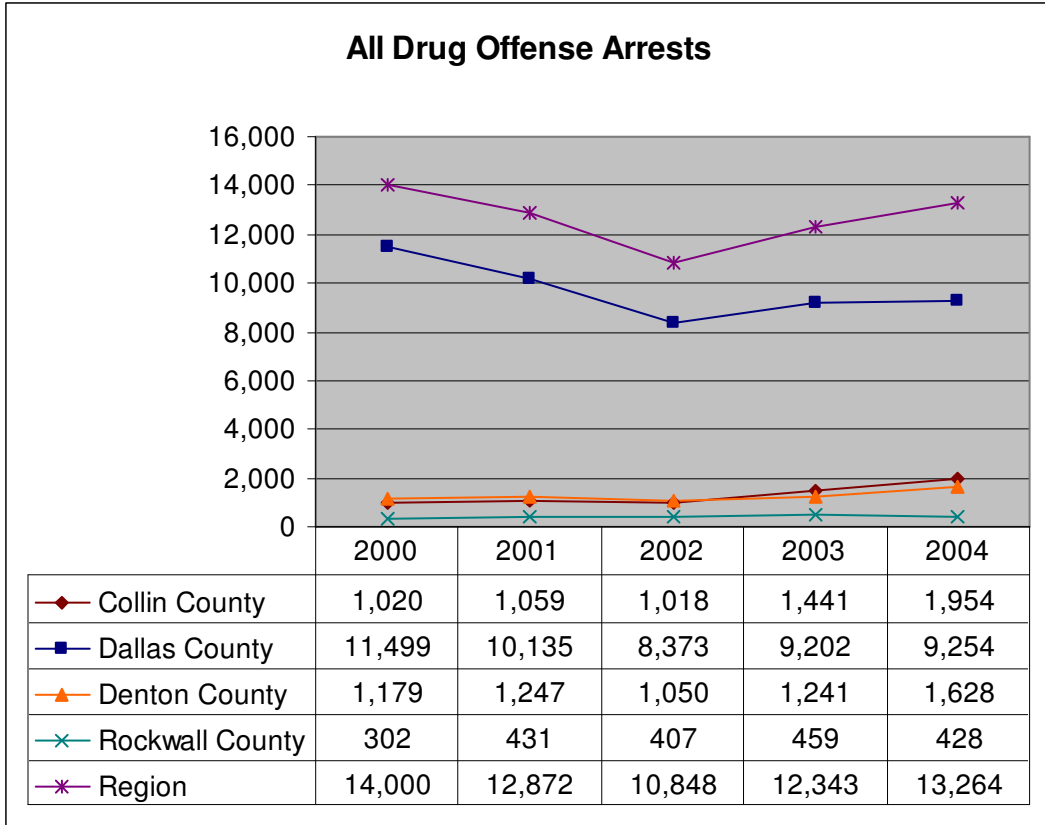
### Rate of Children in Substitute Care (Per 10,000 Children)



	2001	2002	2003	2004
—◆— Collin County	23	27	33	28
—■— Dallas County	56	59	60	63
—▲— Denton County	13	16	18	21
—×— Rockwall County	37	41	40	26

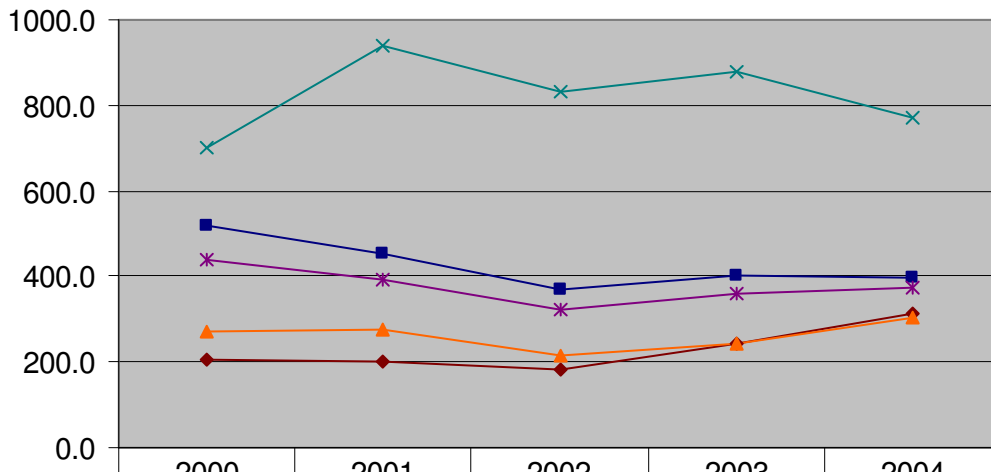
Source: Texas Department of Family and Protective Services

## Substance Abuse Arrests



Source: Texas Department of State Health Services

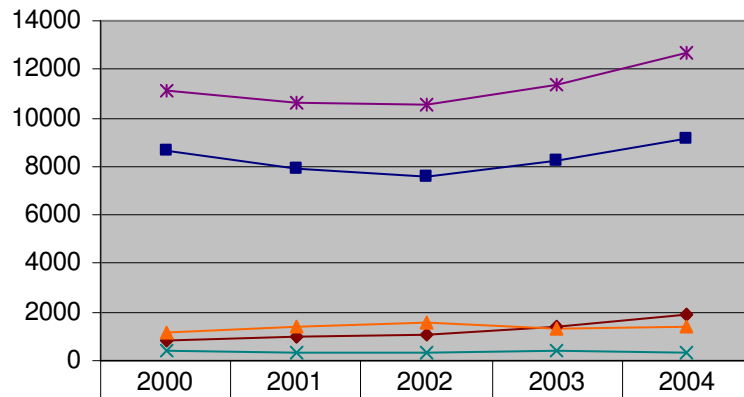
### Rate of Drug Offense Arrests per 100,000 Total Population



	2000	2001	2002	2003	2004
◆ Collin	207.5	202.7	183.7	245.0	313.6
■ Dallas	518.2	451.7	369.1	400.7	398.0
▲ Denton	272.3	273.4	217.2	243.4	303.0
× Rockwall	701.0	937.6	830.6	879.3	770.0
* Region	439.3	393.8	323.3	358.1	374.5

Source: Texas Department of State Health Services

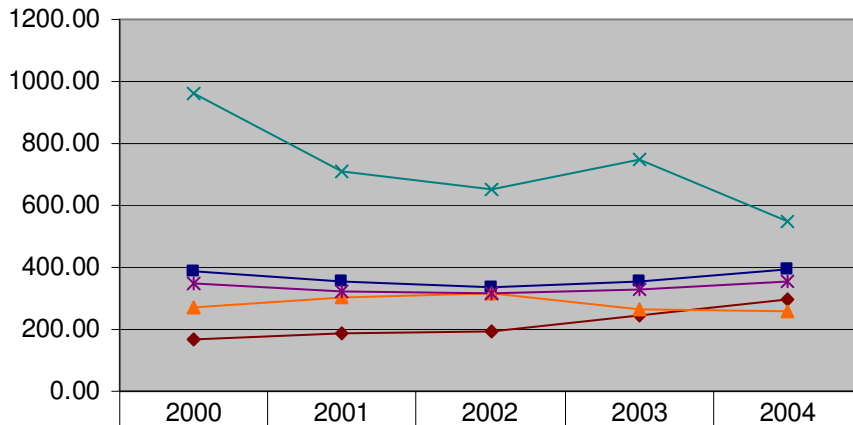
### Number of DWI Arrests



◆ Collin County	838	980	1060	1425	1861
■ Dallas County	8654	7906	7594	8204	9112
▲ Denton County	1175	1381	1531	1335	1371
× Rockwall County	415	326	320	392	304
* Region	11082	10593	10505	11356	12648

Source: Texas Department of State Health Services

### DWI Arrest Rates (Per 100,000)



◆ Collin	170.44	187.59	191.24	242.32	298.67
■ Dallas	390.01	352.35	334.76	357.20	391.85
▲ Denton	271.38	302.76	316.71	261.88	255.16
× Rockwall	963.32	709.19	653.05	750.91	546.95
* Region	347.77	324.11	313.10	329.46	357.15

Source: Texas Department of State Health Services