

## **United Way of Metropolitan Dallas**

*serving Dallas, Collin, Rockwall Counties  
and Greater Lewisville*



what matters.™

# 2006 Community Needs Assessment Building Successful Youth and Families


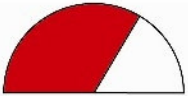

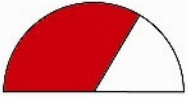

## *Early Childhood Development*

## Early Childhood Development – North Texas Overview

Experiences and development during the early childhood years are critical to children's long-term abilities and future success. Studies are finding that these formative experiences happen earlier in a child's life than previously understood and that stimulation and supportive activities are important even in the pre-language stages.

Overall in the North Texas Region, Early Childhood Development Indicators are improving. The rate of students who are enrolled in Pre-Kindergarten programs in the major ISDs in the North Texas area has increased. The rate of children enrolled in comprehensive ECI services in the region has increased since 2000, although at a smaller rate than the increase of children 0 – 3 yrs.

## Early Childhood Development: Indicators and Trends

INDICATOR	SUMMARY	TREND	CONDITION
Pre-Kindergarten	<p>In the primary Independent School Districts (ISDs) in the North Texas Region, the rate of registered pre-kindergarten students per 1,000 students has increased from 2000 to 2005.</p> <p>Dallas ISD had the highest rates each year, from 39 to 46 students per 1,000 students enrolled.</p> <p>Rockwall and Lewisville ISDs had the lowest rates in the region from 2000 to 2005, with Lewisville having the lowest rates in recent years.</p>	 <b>Improving</b>	 Concerned
Special Education Students	<p>In the primary Independent School Districts (ISDs) in the North Texas Region, the rate of special education students per 1,000 has remained relatively stable from 2000 to 2005.</p> <p>Plano ISD had the highest rates each year, from 104 to 115 students per 1,000 students enrolled.</p> <p>Dallas ISDs had the lowest rates in the region from 2000 to 2005.</p>	 <b>Same or Mixed</b>	 Concerned
Early Childhood Intervention	<p>From 2000 to 2004, the population of children 0 – 3 yrs. has increased by 29%. Over that time period, the rate of children enrolled in ECI comprehensive services has increased by 4%.</p>		 Concerned

## Early Childhood Development: By County

### Collin County

- In Plano ISD, the rate of children enrolled in Pre Kindergarten per 1,000 students has increased by 280% from 2000 to 2005. Total student enrollment increased by 15% over the same time period.
- In McKinney ISD, the rate of children enrolled in Pre Kindergarten per 1,000 students has increased by 3% from 2000 to 2005, the smallest increase in the region. Overall student enrollment has increased by 63% in the same time period – the largest increase of the region.
- With 115 students per 1,000 students enrolled in Special Education programs, Plano ISD continues to have the highest rate of Special Education enrollment in the region.
- Collin County was the only county in the region that experienced a decrease in the rate of children enrolled in Early Childhood Intervention (ECI) comprehensive services from 2000 to 2004.

### Dallas County

- The rate of children enrolled in Pre Kindergarten per 1,000 students has increased by 17% from 2000 to 2005.
- With 46 students per 1,000 students enrolled in Pre Kindergarten, Dallas ISD continues to have the highest rate of Pre Kindergarten enrollment in the region
- With 82 students per 1,000 students enrolled in Special Education programs, Dallas ISD continues to have the lowest rate of Special Education enrollment in the region.
- Dallas and Denton Counties have the lowest rates of children enrolled in ECI comprehensive services in the region – about 25 children per 1,000 0-3 year olds in the population.

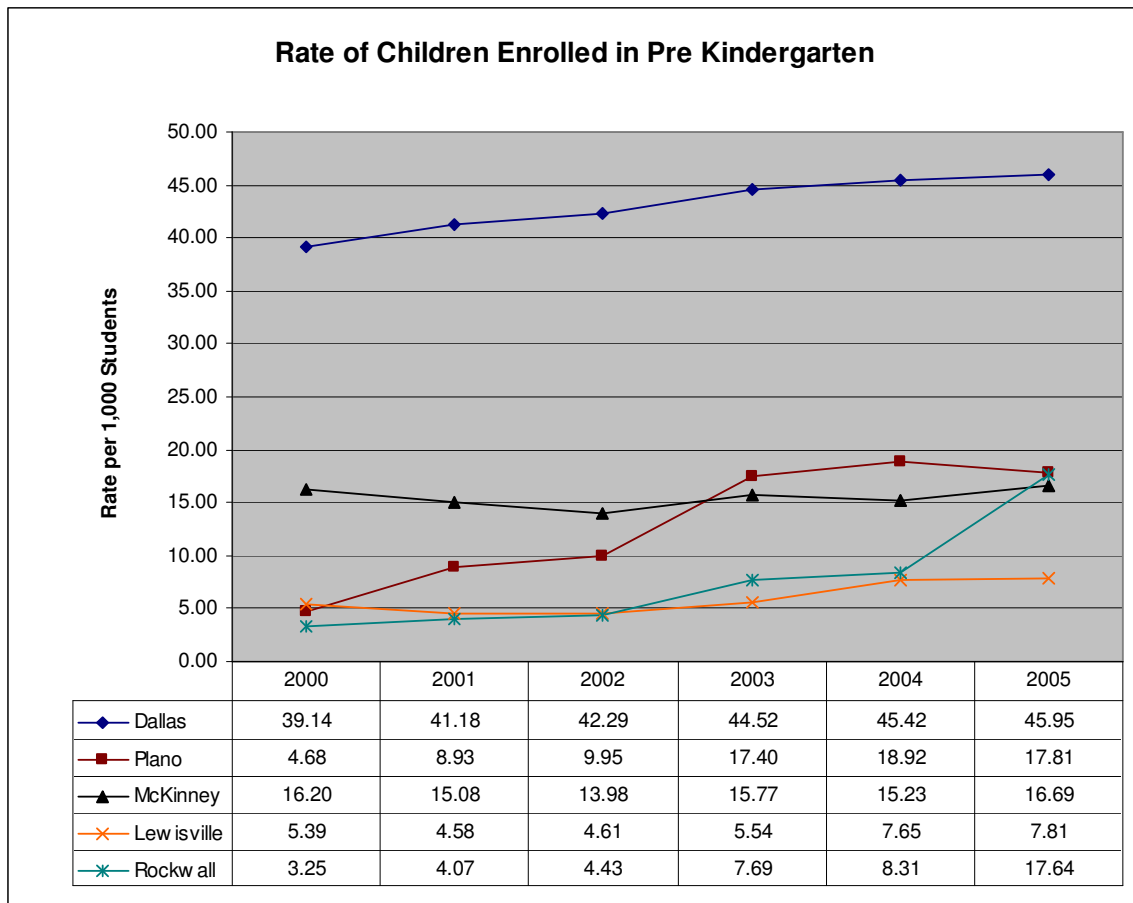
### Denton County

- In Lewisville ISD, the rate of children enrolled in Pre Kindergarten per 1,000 students has increased by 45% from 2000 to 2005.
- With 7 students per 1,000 students enrolled in Pre Kindergarten, Lewisville ISD continues to have the lowest rate of Pre Kindergarten enrollment in the region.
- The rate of youth enrolled in Special Education programs per 1,000 students has decreased by 15% from 2000 to 2005. Total student enrollment increased by 23% over the same time period.
- Dallas and Denton Counties have the lowest rates of children enrolled in ECI comprehensive services in the region – about 25 children per 1,000 0-3 year olds in the population.

### Rockwall County

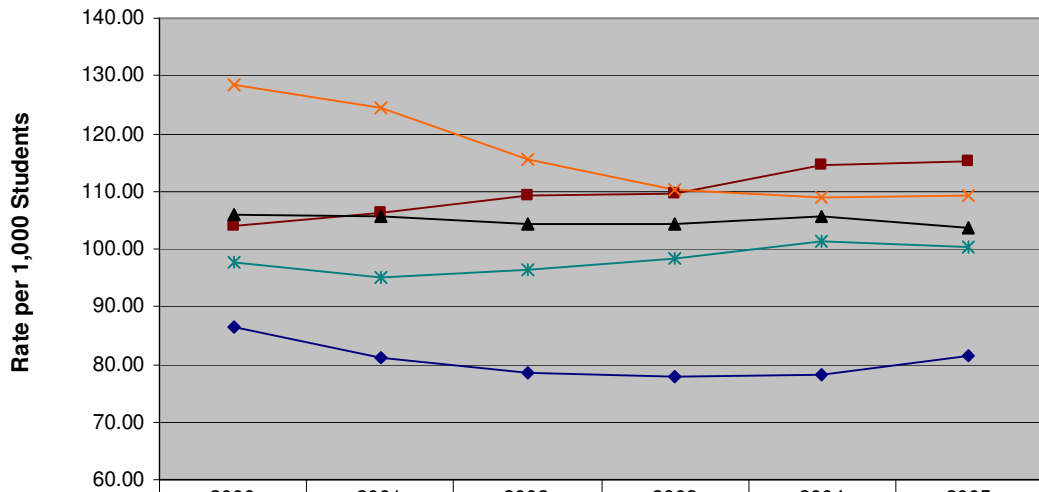
- In Rockwall ISD, the rate of children enrolled in Pre Kindergarten per 1,000 students has increased by 443% from 2000 to 2005, the largest in the region. Overall student enrollment has increased by only 37% in the same time period.
- Rockwall County continues to have the highest rate of children enrolled in EDI comprehensive services in the region – about 59 children per 1,000 0-3 year olds in the population.

## Early Childhood Development: Supporting Data



Source: Texas Education Agency

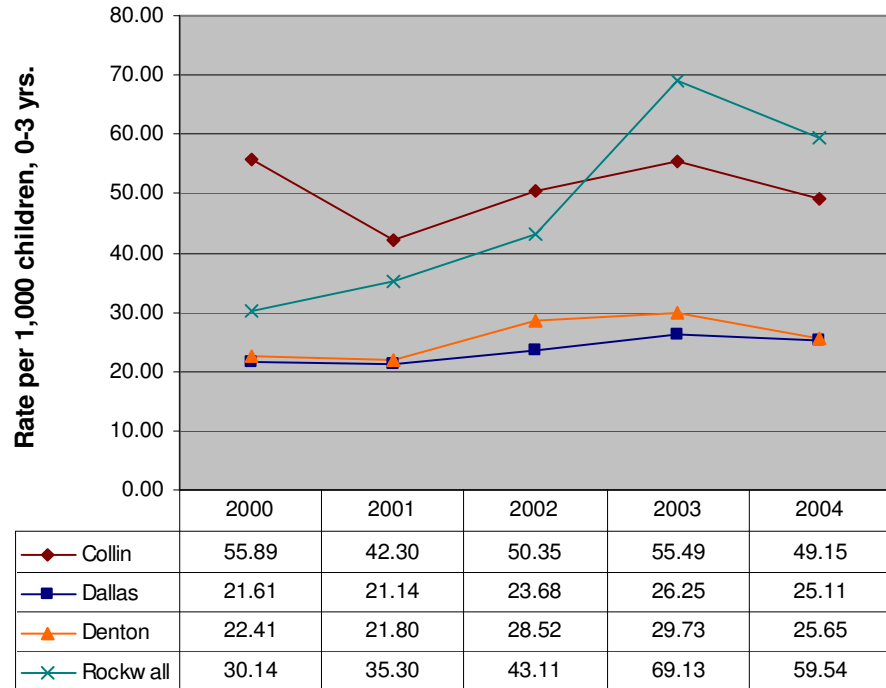
### Rate of Special Education Students by ISD



	2000	2001	2002	2003	2004	2005
◆ Dallas	86.41	81.28	78.44	78.00	78.23	81.65
■ Plano	103.89	106.25	109.23	109.44	114.48	115.15
▲ McKinney	106.10	105.50	104.43	104.26	105.65	103.60
✕ Lewisville	128.55	124.41	115.41	110.41	108.89	109.10
* Rockwall	97.66	94.99	96.25	98.44	101.26	100.33

Source: Texas Education Agency

### Rate of Children enrolled in Early Childhood Intervention Comprehensive Services



Source: Texas Department of Assistive and Rehabilitative Services – ECI Services