

United Way of Metropolitan Dallas

*serving Dallas, Collin, Rockwall Counties
and Greater Lewisville*



what matters.™

2006 Community Needs Assessment Building Successful Youth and Families

Childcare/After School

Child Care/After School – North Texas Overview

Each day, a substantial number of children in the North Texas Region spend time in either center or home based child care. This care enables parents to work or attend school and is vital to the well-being of these families. Many studies have found that high quality child care is more beneficial for children's cognitive, language, and social development than low quality child care. Although there are many types of accreditations for child care providers, participation is voluntary.

The 2004 *Beyond ABC* report shows that the average cost of child care in Dallas County ranges from \$73 a week for school-age children to \$118 for infants and can exceed \$200 per week. As a result, paying for unsubsidized child care is a challenge for many low-income families and many families with several children needing child care.

The “In America after 3PM” study reports that Texas 23% of Texas children in working families are unsupervised in the afternoon.

Overall, the North Texas region is doing worse in regards to Child Care and After School care indicators. Most indicators indicate that there are significantly less child care slots and facilities since 2000, while the child population has increased by 21%. The rate of listed family homes has increased dramatically.

Notes

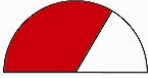


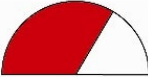


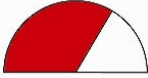
** Licensed facilities are inspected every 5-12 months. These facilities provide children under 14 care for less than 24 hours a day.*

**Registered family homes provide care in the caregiver's home for up to six children under age 14. No more than 12 children can be in care at any time, including children of the caregiver. The application process requires that a provider complete an orientation class and receive clearances on background checks. A registration certificate is issued after licensing staff complete an on-site inspection to insure minimum standards are met. Registered homes are inspected every 1-3 years.*

**Listed Family Homes is a caregiver at least 18 years old who provides care in their home for compensation, for three or fewer children ages birth through 13 years who are unrelated to the caregiver. The care is provided for at least four hours a day, three or more times a week, and more than nine consecutive weeks. The total number of children in care, including children related to the caregiver, may not exceed 12.*

** Texas Rising Star providers are regulated providers that voluntarily meet quality standards that are above and beyond those required by the Texas Department of Protective and Regulatory Services.*

Childcare/After School: Indicators and Trends

INDICATOR	SUMMARY	TREND	CONDITION
Licensed Day Care Slots	The population of children 0-13 years in the North Texas Region has increased by 21% from 2000 to 2005. During this time period, the rate of child care slots has decreased by 10%. Collin County continues to have the highest rate of slots per 1,000 children 0-13 yrs.	↓ Worsening	 Concerned
Licensed Day Care Facilities	The population of children 0-13 years in the North Texas Region has increased by 21% from 2000 to 2005. During this time period, the rate of licensed child care facilities has decreased by 18%. Dallas continues to have the lowest rate of Licensed Day Care facilities in the region.	↓ Worsening	 Critical
Registered Family Homes	The rate of registered family homes has decreased by 39% in the North Texas region from 2000 to 2005. Denton County continues to have the highest rate of Registered Family homes in the region.	↓ Worsening	 Critical
Listed Family Homes	The rate of listed family homes in the region has increased by over 130% over the same time period. Dallas continues to have the lowest rate of Listed Family homes in the region – less than 1 home per 1,000 children 0-13 yrs.	↑ Improving	 Concerned
Eligible Children in Care	The rate of eligible children in subsidized care in the region has decreased by 23% while the population of children 0-13 years has increase 21% from 2000 to 2005. Dallas continues to have the highest rate of eligible children in subsidized care in the region – almost 3 times the rate of eligible children in care in Collin County.	↓ Worsening	 Critical
Texas Rising Star Providers	Between 2000 and 2005, the North Texas Region has seen a decrease in the number of Texas Rising Star Providers of 12%. Dallas experienced the largest decrease in the region, 15%.	↓ Worsening	 Critical
After School Care	In Texas, 23% of children in working families are unsupervised in the afternoon. In Texas, 31% of Caucasian, 25% of African-American and Hispanic, and 21% of Asian Pacific Islander children in working families are unsupervised in the afternoons.	N/A	 Concerned

Childcare/After School: By County

Collin County

- Although the child population from 0 – 13 years has increased by 69% from 2000 to 2005, the rate of child care slots has decreased by 21%.
- Collin County continues to have the highest rate of licensed child care slots per 1,000 children in the population – 233 slots / 1,000 children.
- The rate of child licensed day care facilities has decreased by 30%.
- The rate of registered family homes has decreased by 44% from 2000 to 2005, yet there has been a 104% increase in the rate of listed family homes.
- The number Texas Rising Star Providers decreased by 7%.

Dallas County

- Although the child population from 0 – 13 years has increased by 9% from 2000 to 2005, the rate of child care slots has decreased by 14%.
- Dallas County continues to have the lowest rate of licensed child care facilities per 1,000 children in the population – 1.7 facilities / 1,000 children.
- The rate of registered family homes has decreased by 36% from 2000 to 2005, yet there has been a 166% increase in the rate of listed family homes.
- Although the child population from 0 – 13 years has increased by 9% from 2000 to 2005, the number Texas Rising Star Providers decreased by 15%.
- The rate of eligible children in subsidized care has decreased by 25%. This is the largest decrease in the region.

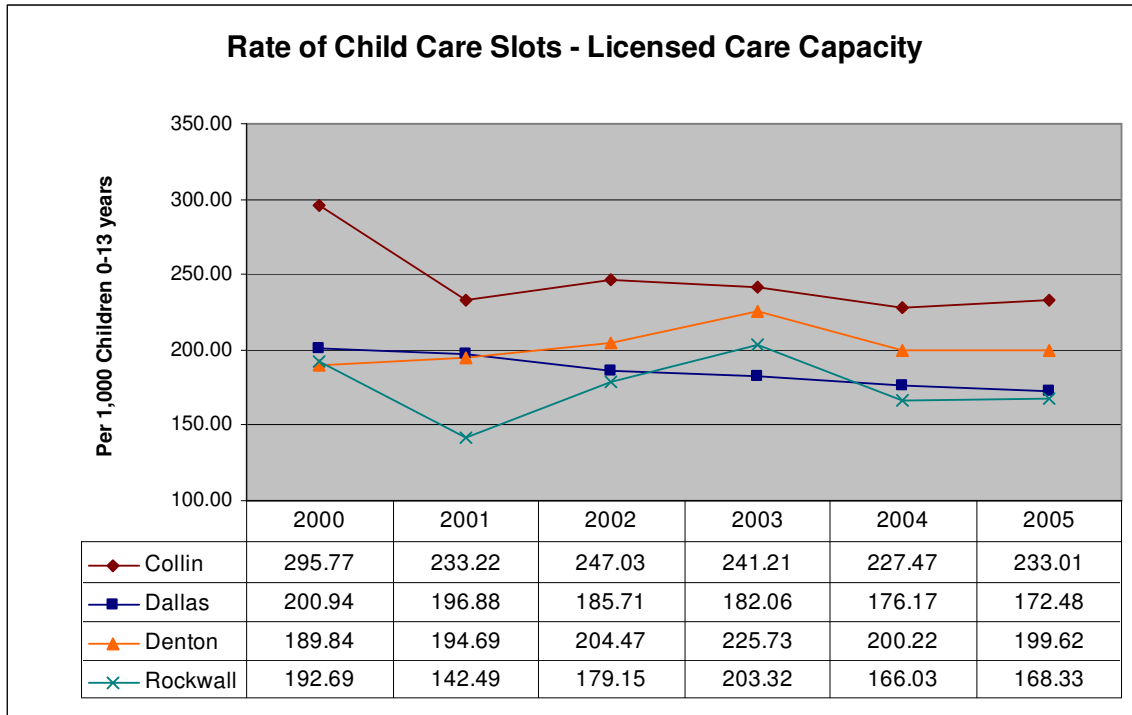
Denton County

- Denton County is the only county in the region that experienced an increase in the rate of child care slots from 2000 to 2005.
- The rate of registered family homes has decreased by 43% from 2000 to 2005, yet there has been a 61% increase in the rate of listed family homes.
- The rate of eligible children in subsidized care has increased by 71%.

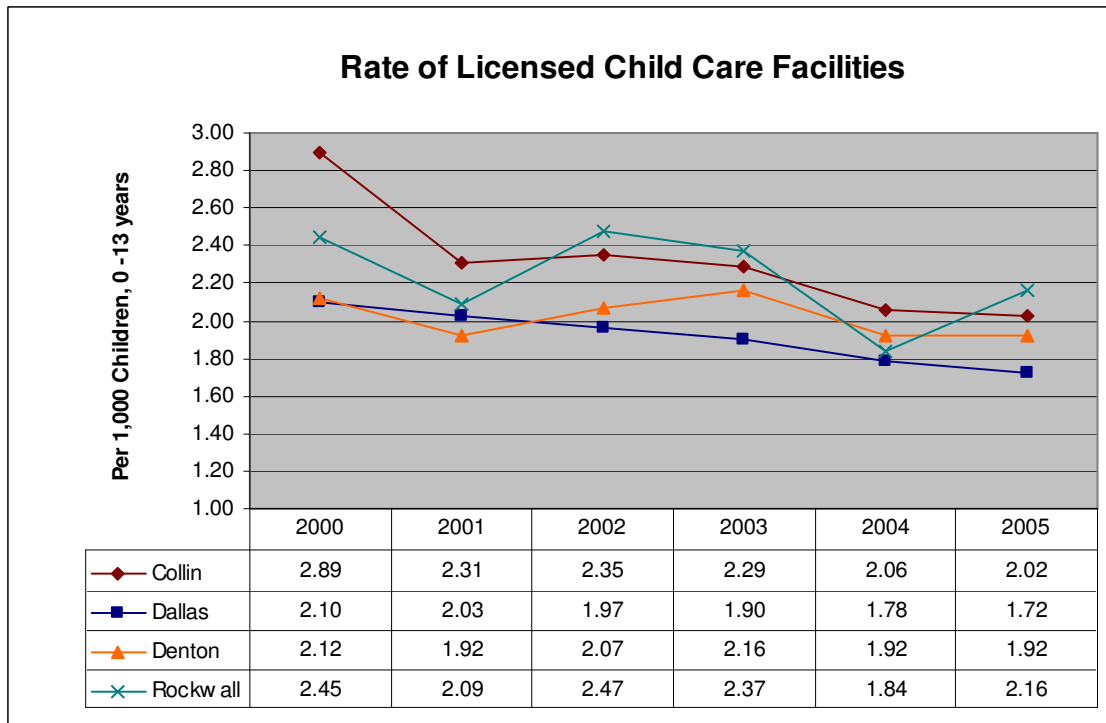
Rockwall County

- Although the child population from 0 – 13 years has increased by 61% from 2000 to 2005, the rate of child care slots has decreased by 13%.
- Rockwall County continues to have the lowest rate of licensed child care slots per 1,000 children in the population – 168 slots / 1,000 children.
- The rate of registered family homes has decreased by 53% from 2000 to 2005, yet there has been a 117% increase in the rate of listed family homes.
- Rockwall County continues to have the lowest rate of registered family homes per 1,000 children in the population – less than half a home / 1,000 children.

Childcare/After School: Supporting Data



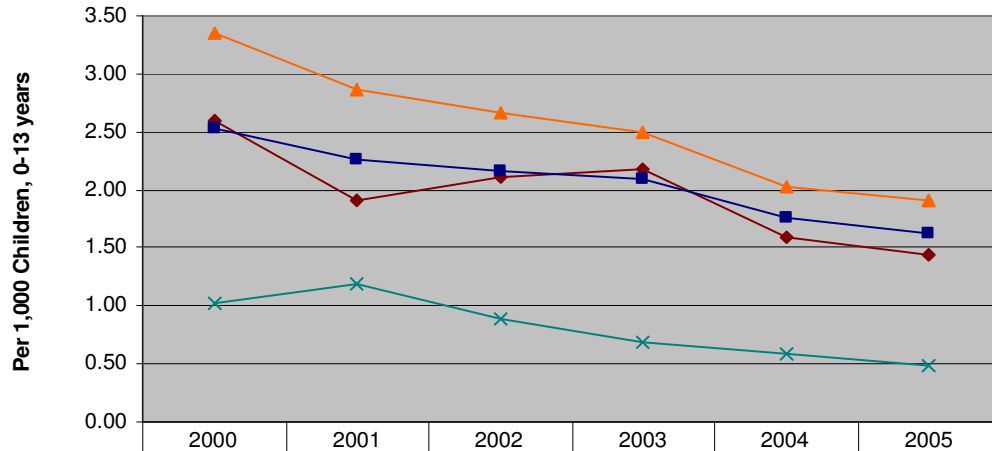
Source: Texas Department of Protective and Regulatory Services



Source: Texas Department of Protective and Regulatory Services

* Licensed facilities are inspected every 5-12 months. These facilities provide children under 14 care for less than 24 hours a day.

Rate of Registered Family Homes

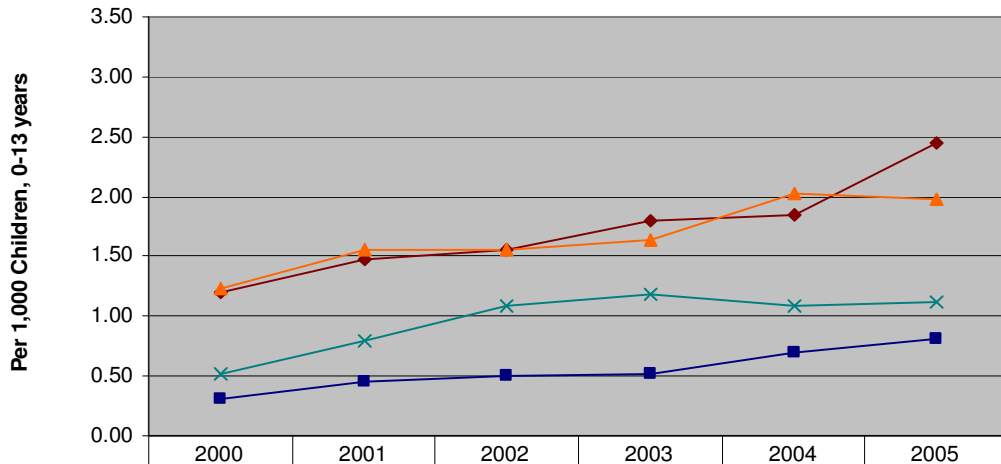


◆ Collin	2.59	1.91	2.11	2.17	1.59	1.45
■ Dallas	2.53	2.26	2.17	2.09	1.76	1.62
▲ Denton	3.34	2.86	2.66	2.49	2.02	1.91
× Rockwall	1.03	1.20	0.89	0.69	0.58	0.48

Source: Texas Department of Protective and Regulatory Services

**Registered family homes provide care in the caregiver's home for up to six children under age 14. No more than 12 children can be in care at any time, including children of the caregiver. The application process requires that a provider complete an orientation class and receive clearances on background checks. A registration certificate is issued after licensing staff complete an on-site inspection to insure minimum standards are met. Registered homes are inspected every 1-3 years.*

Rate of Listed Family Homes

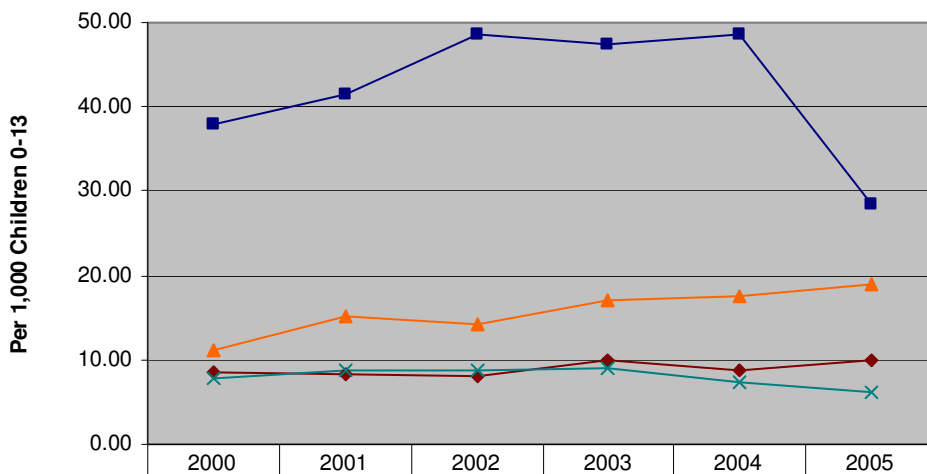


	2000	2001	2002	2003	2004	2005
◆ Collin	1.20	1.48	1.55	1.80	1.85	2.45
■ Dallas	0.31	0.46	0.49	0.52	0.70	0.81
▲ Denton	1.23	1.56	1.56	1.64	2.03	1.98
× Rockw all	0.51	0.80	1.09	1.18	1.08	1.12

Source: Texas Department of Protective and Regulatory Services

**Listed Family Homes is a caregiver at least 18 years old who provides care in their home for compensation, for three or fewer children ages birth through 13 years who are unrelated to the caregiver. The care is provided for at least four hours a day, three or more times a week, and more than nine consecutive weeks. The total number of children in care, including children related to the caregiver, may not exceed 12.*

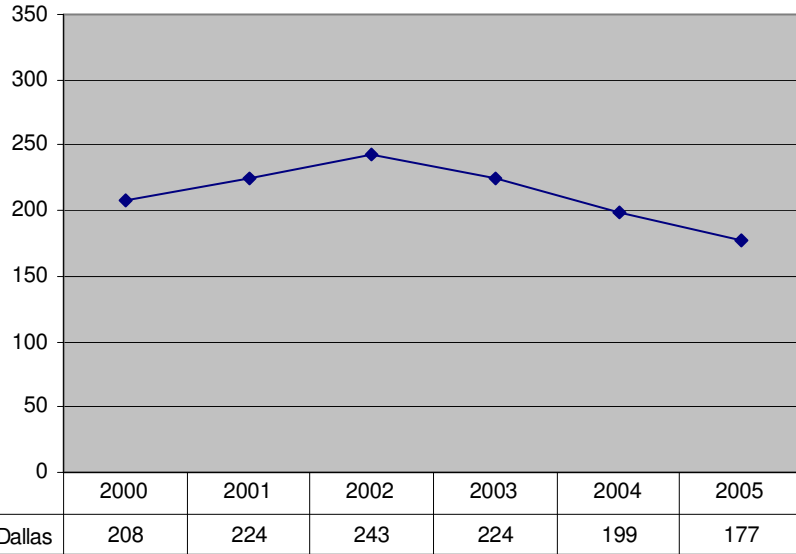
Rate of Eligible Children in Subsidized Care



	2000	2001	2002	2003	2004	2005
◆ Collin	8.59	8.41	8.02	9.89	8.68	9.92
■ Dallas	37.86	41.57	48.50	47.32	48.57	28.48
▲ Denton	11.09	15.16	14.18	16.98	17.61	18.95
× Rockw all	7.85	8.67	8.81	8.89	7.34	6.08

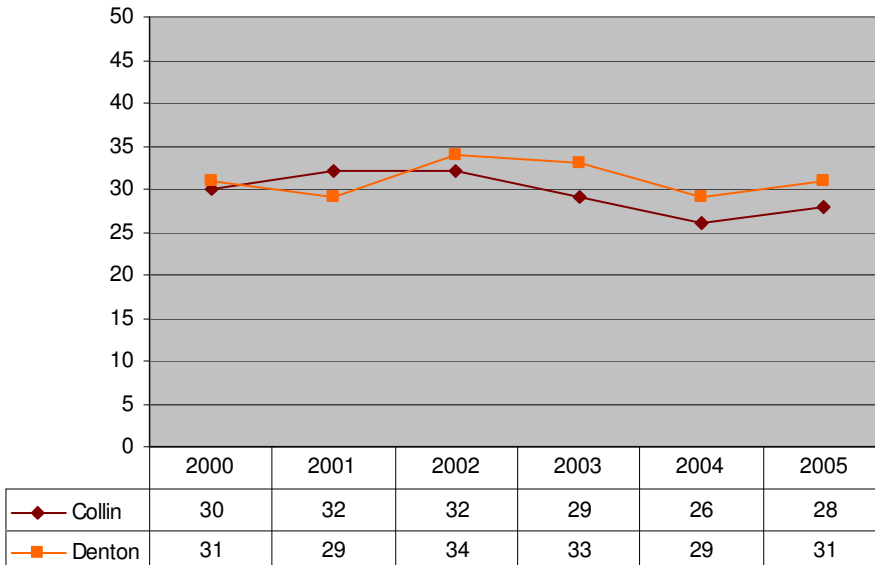
Source: Child Care Assistance, Dallas County and North Central Texas Child Care Services

Number of Texas Rising Star Providers Dallas County



Source: Child Care Assistance, Dallas County

Number of Texas Rising Star Providers Collin and Denton Counties



Source: North Central Texas Child Care Services

** Texas Rising Star providers are regulated providers that voluntarily meet quality standards that are above and beyond those required by the Texas Department of Protective and Regulatory Services.*

Income Guidelines for Child Care Assistance
*North Central Texas Workforce Development Area –
Collin, Denton, Rockwall Counties &
Dallas County Workforce Development Area*

Family Size	9/1/2004 185% Federal Poverty Guideline	9/1/2005 185% Federal Poverty Guideline
1	\$17,705	\$17,224
2	\$23,736	\$23,107
3	\$29,767	\$28,990
4	\$35,798	\$34,873
5	\$41,829	\$40,756
6	\$47,860	\$46,639
7	\$53,891	\$52,522
8	\$59,922	\$58,405